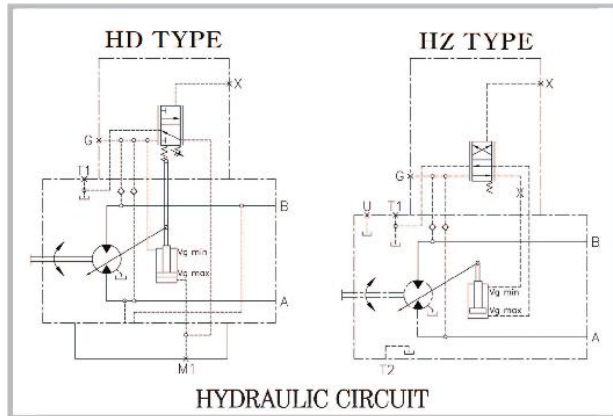
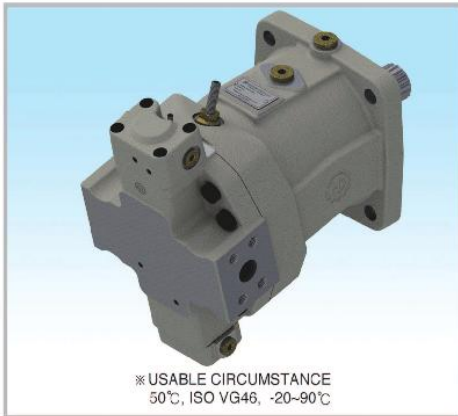
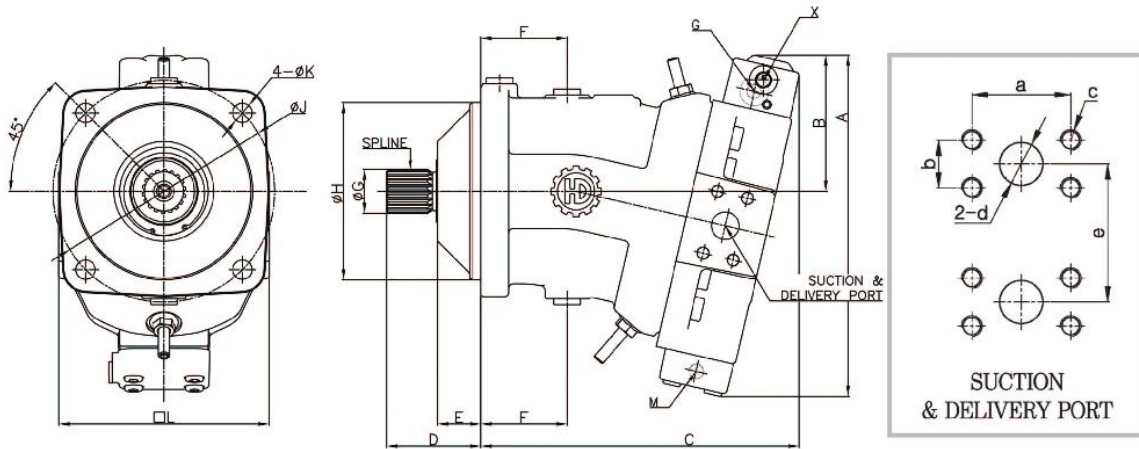


H6VM55/80/107/160/200/250 - FOR HD TYPE BENT AXIS TYPE AXIAL PISTON MOTORS



Flange Mounting face for Suction & Delivery Port (mm)

MODEL	a	b	c	d	e
H6VM55	50.8	23.8	M10x1.5P Dp20	19	108
H6VM80	57.2	27.8	M12x1.75P Dp20	25	108
H6VM107	57.2	27.8	M12x1.75P Dp20	25	130
H6VM160	66.7	31.8	M14x2.0P Dp20	32	152
H6VM200	66.7	31.8	M14x2.0P Dp20	32	164
H6VM250	66.7	31.8	M14x2.0P Dp20	32	112

SPECIFICATIONS

MODEL	DISPLACEMENT (cc/rev)		MAX PRESSURE (Kg/cm ²)	TORQUE (Nm)	R.P.M		FLOW MAX (L/min)
	MAX	MIN			MAX	MIN	
H6VM55	55	35	350	349	4450	7000	244
H6VM80	80	51		509	3900	6150	312
H6VM107	107	68		681	3500	5600	380
H6VM160	160	101		1019	3100	4900	496
H6VM200	200	126		1273	2900	4600	580
H6VM250	250	188		1391	2700	3600	675

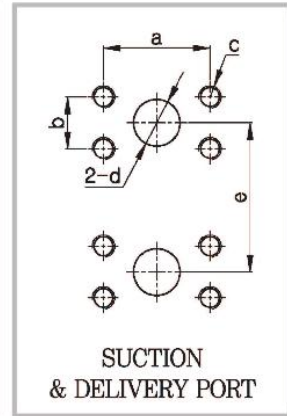
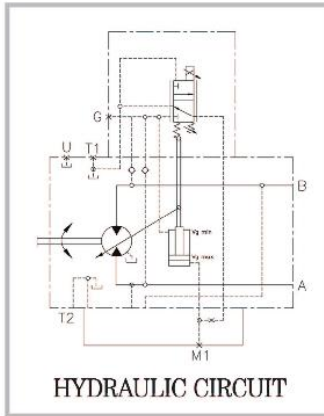
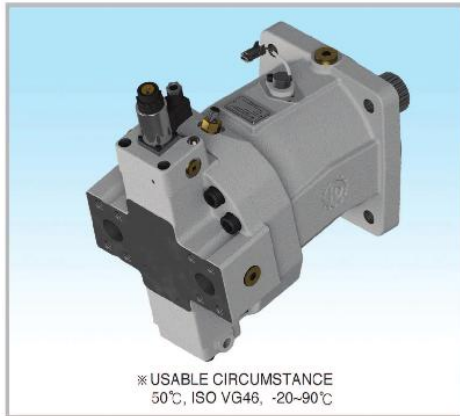
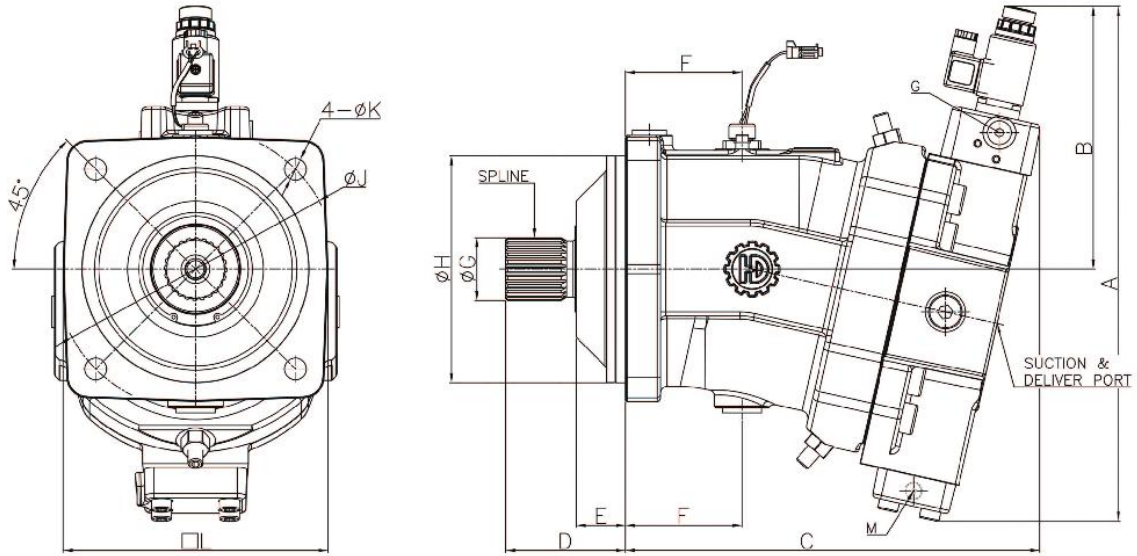
Dimensions of Shaft End(Spline Type)

MODEL	No. of teeth	Pitch circle dia.(mm)	Module	Pressure angle
H6VM55	14	28	2.0	30°
H6VM80	16	32	2.0	30°
H6VM107	18	36	2.0	30°
H6VM160	24	48	2.0	30°
H6VM200	24	48	2.0	30°
H6VM250	24	48	2.0	30°

DIMENSIONS

MODEL	A	B	C	D	E	F	G	H	J	K	L
H6VM55	262	111	238	67	31	67	30	125	160	13.5	150
H6VM80	283	116	269	72	31	76	35	140	180	13.5	165
H6VM107	304	123	289	85	39	78	40	160	200	17.5	190
H6VM160	331	129	328	95	39	92.5	50	180	224	17.5	210
H6VM200	352	143	345	95	39	96	50	200	250	22	236
H6VM250	449	189	383	108	48	82	50	200	250	22	236

H6VM55/80/107/160/200/250 - FOR EP TYPE BENT AXIS TYPE AXIAL PISTON MOTORS



Flange Mounting face for Suction & Delivery Port (mm)

MODEL	a	b	c	d	e
H6VM55	50.8	23.8	M10x1.5P Dp20	19	108
H6VM80	57.2	27.8	M12x1.75P Dp20	25	108
H6VM107	57.2	27.8	M12x1.75P Dp20	25	130
H6VM160	66.7	31.8	M14x2.0P Dp20	32	152
H6VM200	66.7	31.8	M14x2.0P Dp20	32	164
H6VM250	66.7	31.8	M14x2.0P Dp20	32	112

SPECIFICATIONS

MODEL	DISPLACEMENT (cc/rev)		MAX PRESSURE (Kg/cm ²)	TORQUE (Nm)	R.P.M		FLOW MAX (L/min)
	MAX	MIN			MAX	MIN	
H6VM55	55	35	350	349	7000	4450	244
H6VM80	80	51		509	6150	3900	312
H6VM107	107	68		681	5600	3500	380
H6VM160	160	101		1019	4900	3100	496
H6VM200	200	126		1273	4600	2900	580
H6VM250	250	188		1391	3600	2700	675

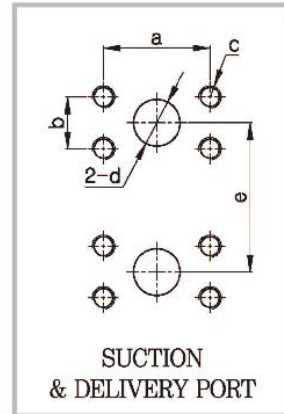
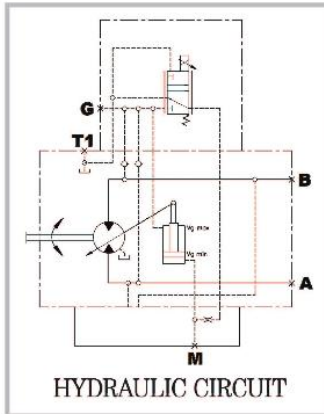
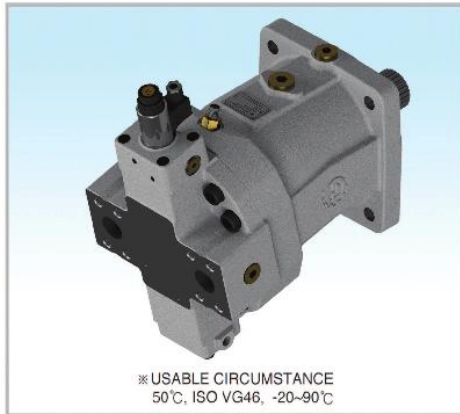
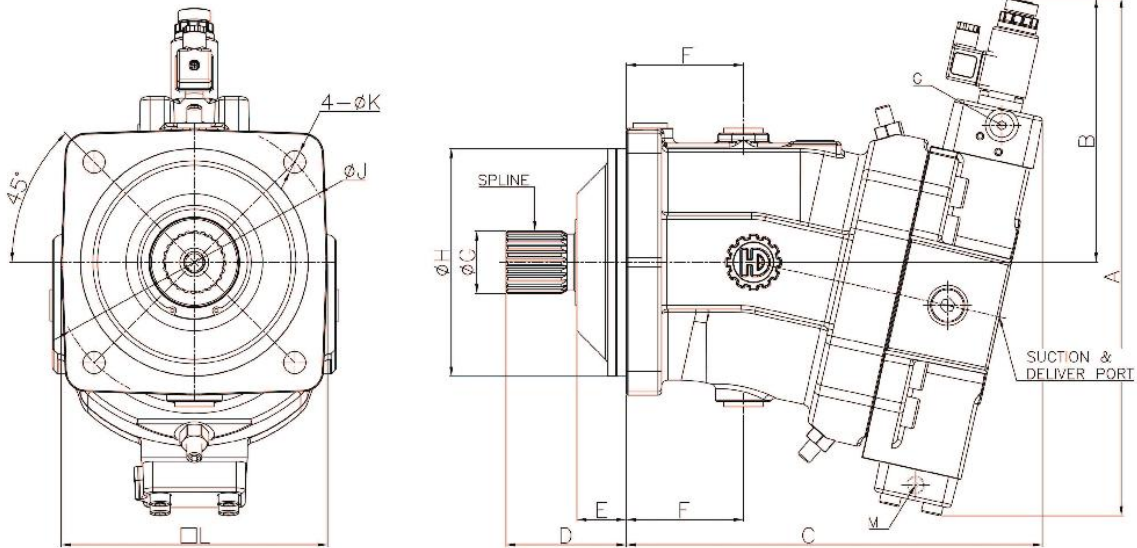
Dimensions of Shaft End(Spline Type)

MODEL	No. of teeth	Pitch circle dia.(mm)	Module	Pressure angle
H6VM55	14	28	2.0	30°
H6VM80	16	32	2.0	30°
H6VM107	18	36	2.0	30°
H6VM160	24	48	2.0	30°
H6VM200	24	48	2.0	30°
H6VM250	24	48	2.0	30°

DIMENSIONS

MODEL	A	B	C	D	E	F	G	H	J	K	L
H6VM55	327	176	243	67	31	67	30	125	180	13.5	150
H6VM80	349	182	271	72	31	76	35	140	180	13.5	165
H6VM107	362	187	287	85	39	78	40	160	200	17.5	190
H6VM160	408	195	328	95	39	92.5	50	180	224	17.5	210
H6VM200	408	199	346	95	39	96	50	200	250	22	236
H6VM250	436	188	383	108	48	82	50	200	250	22	236

H6VM55/80/107/160/200/250 - FOR EZ TYPE BENT AXIS TYPE AXIAL PISTON MOTORS



Flange Mounting face for Suction & Delivery Port (mm)

MODEL	a	b	c	d	e
H6VM55	50.8	23.8	M10x1.5P Dp20	19	75
H6VM80	57.2	27.8	M12x1.75P Dp20	25	84
H6VM107	57.2	27.8	M12x1.75P Dp20	25	84
H6VM160	66.7	31.8	M14x2.0P Dp20	32	152
H6VM200	66.7	31.8	M14x2.0P Dp20	32	164
H6VM250	66.7	31.8	M14x2.0P Dp20	32	112

SPECIFICATIONS

MODEL	DISPLACEMENT (cc/rev)		MAX PRESSURE (Kg/cm ²)	TORQUE (Nm)	R.P.M		FLOW MAX (L/min)
	MAX	MIN			MAX	MIN	
H6VM55	55	35	350	349	7000	4450	244
H6VM80	80	51		509	6150	3900	312
H6VM107	107	68		681	5600	3500	380
H6VM160	160	101		1019	4900	3100	496
H6VM200	200	126		1273	4600	2900	580
H6VM250	250	188		1391	3600	2700	675

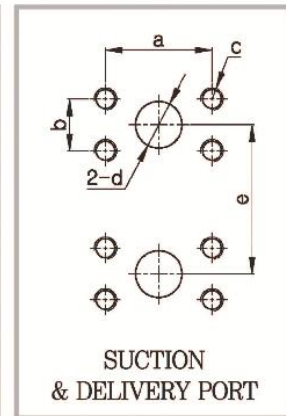
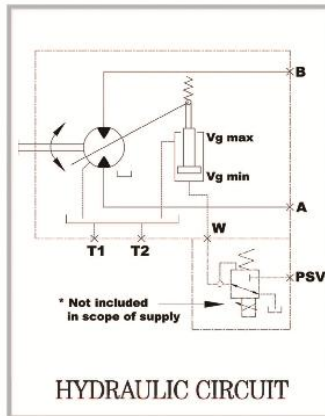
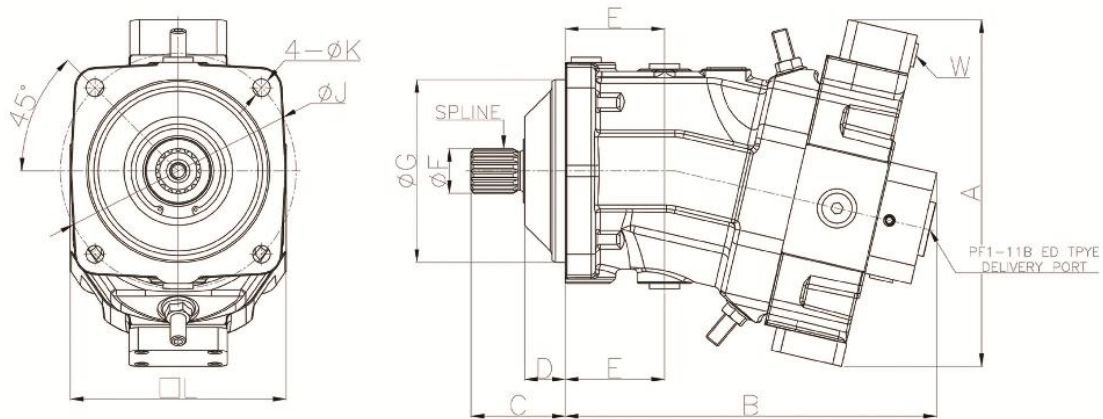
Dimensions of Shaft End(Spline Type)

MODEL	No. of teeth	Pitch circle dia.(mm)	Module	Pressure angle
H6VM55	14	28	2.0	30°
H6VM80	16	32	2.0	30°
H6VM107	18	36	2.0	30°
H6VM160	24	48	2.0	30°
H6VM200	24	48	2.0	30°
H6VM250	24	48	2.0	30°

DIMENSIONS (mm)

MODEL	A	B	C	D	E	F	G	H	J	K	L
H6VM55	327	176	243	67	31	67	30	125	180	13.5	150
H6VM80	349	182	271	72	31	76	35	140	180	13.5	165
H6VM107	362	187	287	85	39	78	40	160	200	17.5	190
H6VM160	408	195	328	95	39	92.5	50	180	224	17.5	210
H6VM200	408	199	346	95	39	96	50	200	250	22	236
H6VM250	436	188	383	108	48	82	50	200	250	22	236

H6VM55/80/107/160/200/250 FOR HJ TYPE BENT AXIS TYPE AXIAL PISTON MOTORS



Flange Mounting face for Suction & Delivery Port (mm)

MODEL	a	b	c	d	e
H6VM55	50.8	23.8	M10x1.5P Dp20	19	108
H6VM80	57.2	27.8	M12x1.75P Dp20	25	108
H6VM107	57.2	27.8	M12x1.75P Dp20	25	130
H6VM160	66.7	31.8	M14x2.0P Dp20	32	152
H6VM200	66.7	31.8	M14x2.0P Dp20	32	164
H6VM250	66.7	31.8	M14x2.0P Dp20	32	112

SPECIFICATIONS

MODEL	DISPLACEMENT (cc/rev)		NORMAL PRESSURE (Kg/cm ²)	TORQUE (Nm)	R.P.M		FLOW MAX (L/min)
	MAX	MIN			MAX	MIN	
H6VM55	55	35	350	349	4450	7000	244
H6VM80	80	51		509	3900	6150	312
H6VM107	107	68		681	3500	5600	380
H6VM160	160	101		1019	3100	4900	496
H6VM200	200	126		1273	2900	4600	580
H6VM250	250	188		1391	2700	3600	675

Dimensions of Shaft End(Spline Type)

MODEL	No. of teeth	Pitch circle dia(mm)	Module	Pressure angle
H6VM55	14	28	2.0	30°
H6VM80	16	35	2.0	30°
H6VM107	18	40	2.0	30°
H6VM160	21	45	2.0	30°
H6VM200	24	48	2.0	30°
H6VM250	24	48	2.0	30°

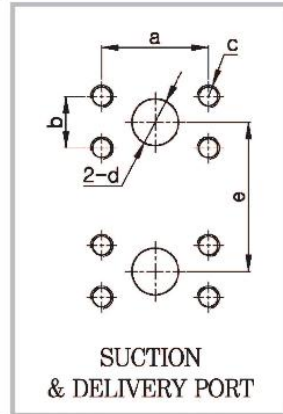
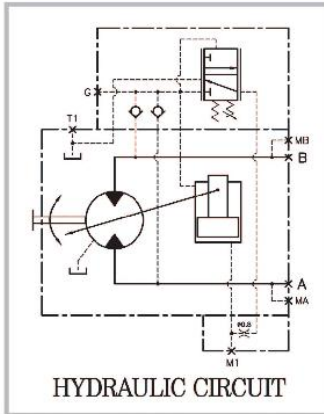
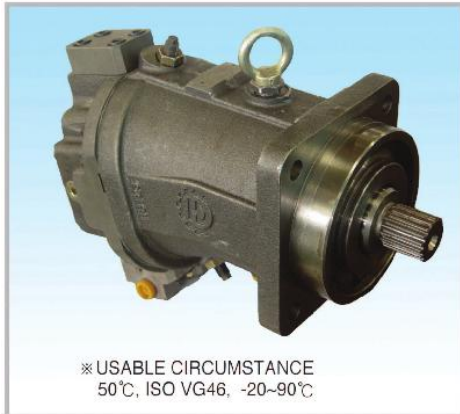
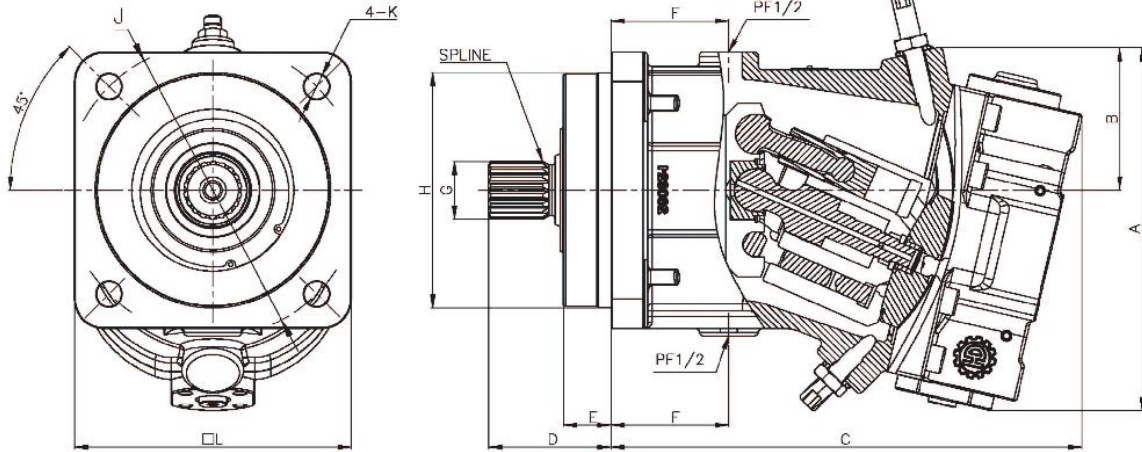
DIMENSIONS

MODEL	A	B	C	D	E	F	G	H	J	K	L
H6VM55	262	256	71	31	16	67	35	125	160	13.5	150
H6VM80	285	283	72	31	16	76	35	140	180	13.5	165
H6VM107	280	302	85	39	17	78	40	160	200	17.5	190
H6VM160	303	334	95	39	19	93	45	180	224	17.5	210
H6VM200	352	361	95	39	19	96	50	200	250	17.5	236
H6VM250	449	399	108	48	22	82	50	200	245	17.5	236

H6VM55/80/107/160/200/250 BENT AXIS TYPE AXIAL PISTON MOTORS



CONNECT ROD TYPE



Flange Mounting face for Suction & Delivery Port (mm)

MODEL	a	b	c	d	e
H6VM55	50.8	23.8	M10x1.5P Dp20	19	108
H6VM80	57.2	27.8	M12x1.75P Dp20	25	108
H6VM107	57.2	27.8	M12x1.75P Dp20	25	130
H6VM160	66.7	31.8	M14x2.0P Dp20	32	152
H6VM200	66.7	31.8	M14x2.0P Dp20	32	164
H6VM250	66.7	31.8	M14x2.0P Dp20	32	112

SPECIFICATIONS

MODEL	DISPLACEMENT (cc/rev)		MAX PRESSURE (Kg/cm ²)	TORQUE (Nm)	R.P.M		FLOW MAX (L/min)
	MAX	MIN			MAX	MIN	
H6VM55	55	35	350	349	7000	4450	244
H6VM80	80	51		509	6150	3900	312
H6VM107	107	68		681	5600	3500	380
H6VM160	160	101		1019	4900	3100	496
H6VM200	200	126		1273	4600	2900	580
H6VM250	250	188		1391	3600	2700	675

Dimensions of Shaft End(Spline Type)

MODEL	No. of teeth	Pitch circle dia(mm)	Module	Pressure angle
H6VM55	14	28	2.0	30°
H6VM80	16	32	2.0	30°
H6VM107	18	36	2.0	30°
H6VM160	24	48	2.0	30°
H6VM200	24	48	2.0	30°
H6VM250	24	48	2.0	30°

DIMENSIONS (mm)

MODEL	A	B	C	D	E	F	G	H	J	K	L
H6VM55	225	90	280	65	25	67	Ø30	Ø125	Ø160	Ø13.5	150
H6VM80	240	95	300	72	25	75	Ø35	Ø140	Ø180	Ø13.5	165
H6VM107	255	100	320	83	32	80	Ø39.5	Ø160	Ø200	Ø17.5	190
H6VM160	292	107	360	90	32	92	Ø45	Ø180	Ø224	Ø17.5	210
H6VM200	352	143	345	95	39	96	Ø49.8	Ø200	Ø250	Ø22	238
H6VM250	441	189	372	108	48	82	Ø50	Ø200	Ø250	Ø22	238