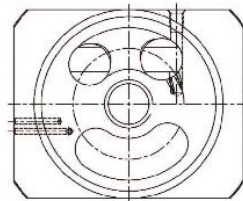
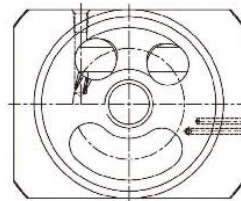




A7VO SERIES

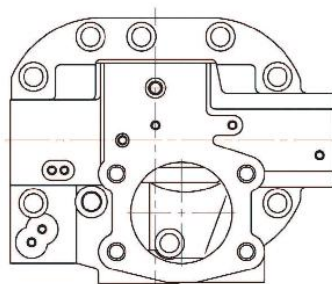


CCW (L)

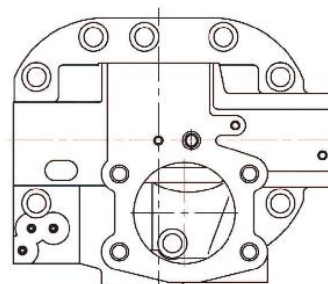


CW (R)

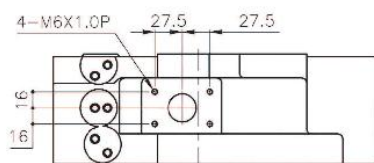
IT IS DIFFERENT WITH VALVE PLATE



HEAD COVER(LR)

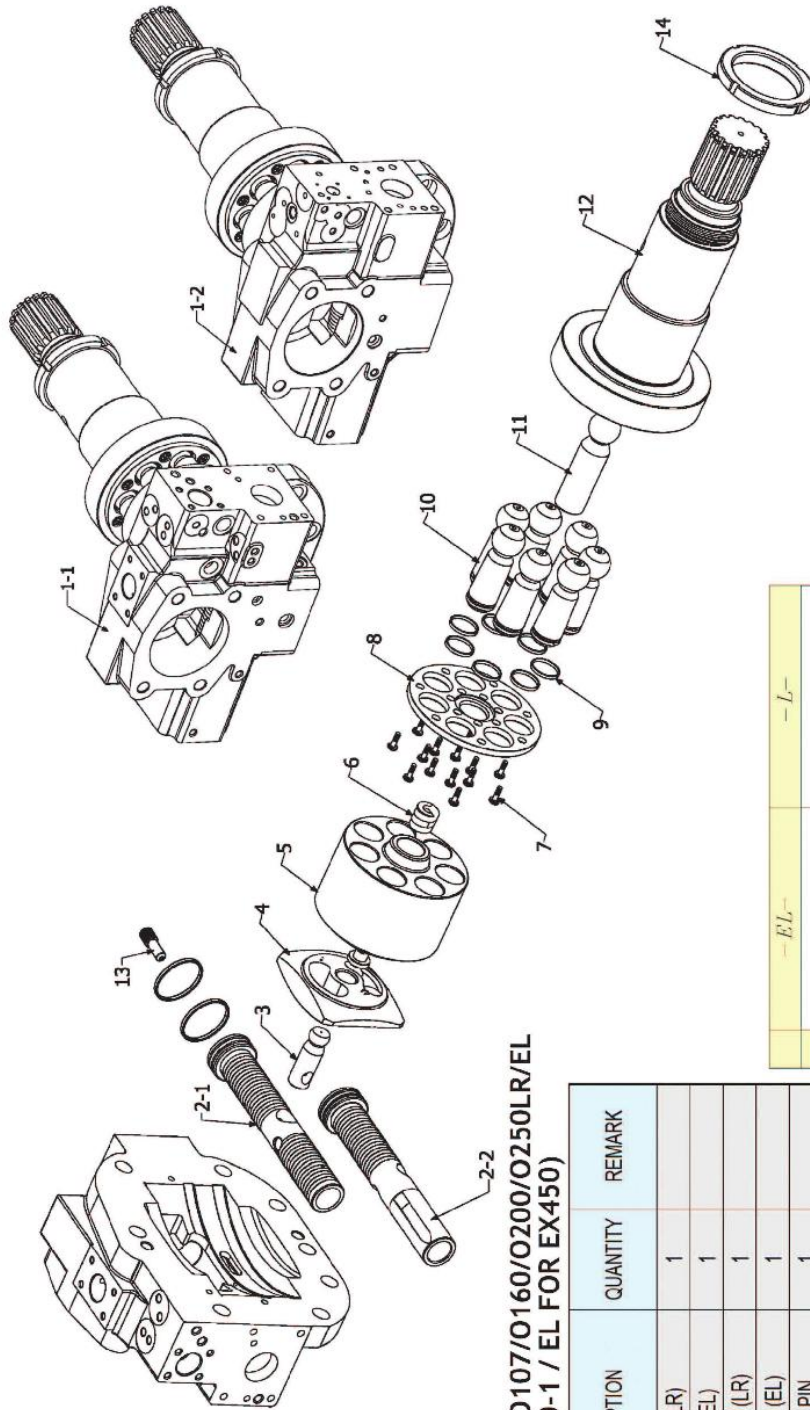


HEAD COVER(EL)



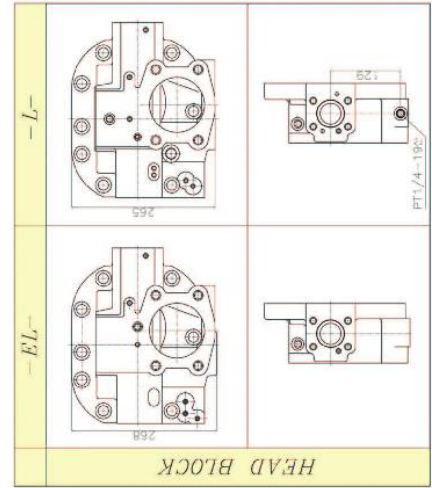
IT IS DIFFERENT SHAPE OF HEAD COVER LR TYPE AND EL TYPE

A7VO SERIES



A7VO55/O80/O107/O160/O200/O250LR/EL
(LR FOR EX400-1 / EL FOR EX450)

ITEM	DESCRIPTION	QUANTITY	REMARK
1-1	HEAD COVER (LR)	1	
1-2	HEAD COVER (EL)	1	
2-1	SERVO PISTON (LR)	1	
2-2	SERVO PISTON (EL)	1	
3	SERVO PISTON PIN	1	
4	VALVE PLATE (LR)	1	
5	CYLINDER BLOCK	1	
6	COIL SPRING	1	
7	SOCKET BOLT	14	
8	RETAINER PLATE	1	
9	RING OF PISTON	7	
10	PISTON	7	
11	CENTER PIN	1	
12	DRIVE SHAFT	1	
13	SERVO PISTON GUIDE PIN	1	
14	LOCK NUT	1	



HAN DOK HYDRAULIC