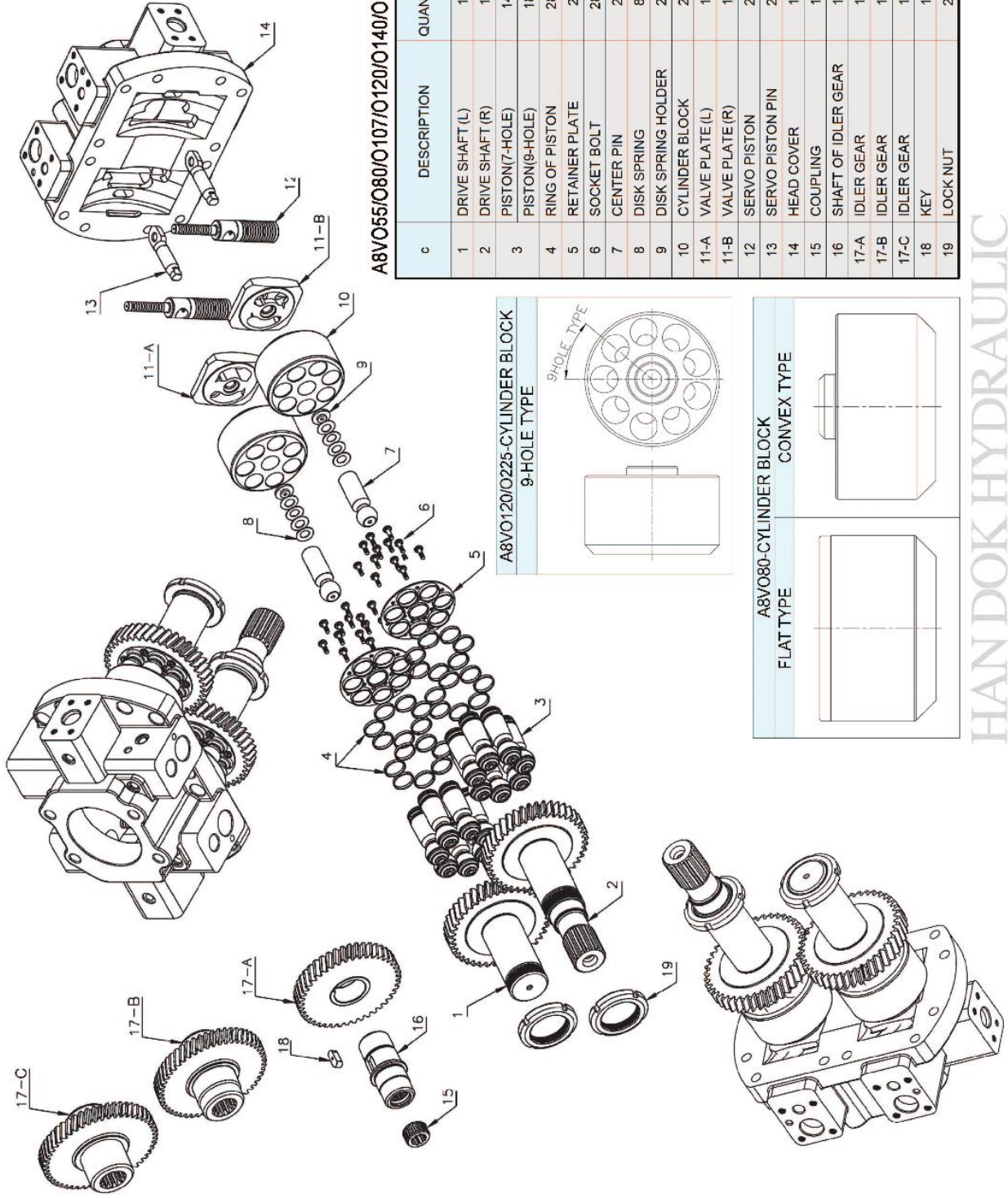
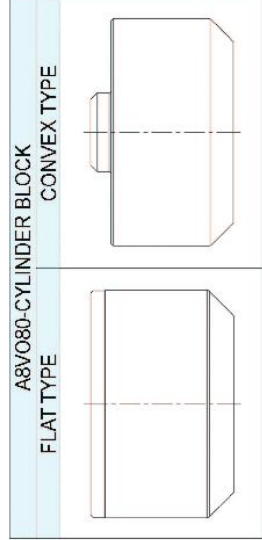
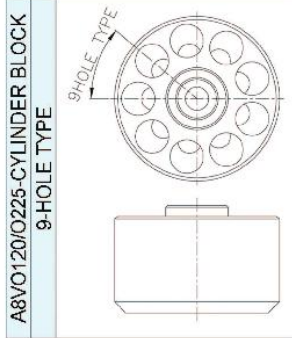


# A8VO SERIES



A8VO55/O80/O107/O120/O140/O160/O200/O225

c	DESCRIPTION	QUANTITY	REMARK
1	DRIVE SHAFT (L)	1	
2	DRIVE SHAFT (R)	1	
3	PISTON(7-HOLE)	14	
4	RING OF PISTON	18	
5	RETAINER PLATE	28	
6	SOCKET BOLT	2	
7	CENTER PIN	28	
8	DISK SPRING	8	
9	DISK SPRING HOLDER	2	
10	CYLINDER BLOCK	2	
11-A	VALVE PLATE (L)	1	
11-B	VALVE PLATE (R)	1	
12	SERVO PISTON	2	
13	SERVO PISTON PIN	2	
14	HEAD COVER	1	
15	COUPLING	1	
16	SHAFT OF IDLER GEAR	1	
17-A	IDLER GEAR	1	CAT TYPE
17-B	IDLER GEAR	1	FIAT TYPE-14T
17-C	IDLER GEAR	1	FIAT TYPE-13T
18	KEY	1	
19	LOCK NUT	2	



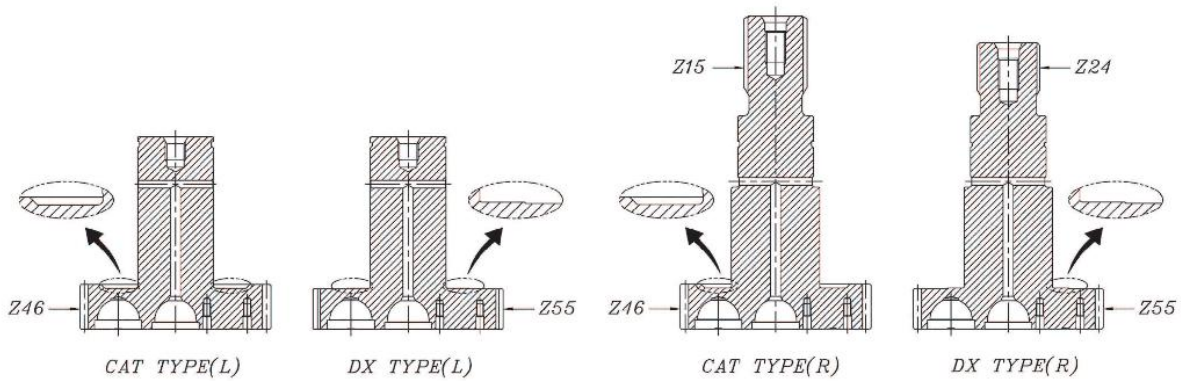
HAN DOK HYDRAULIC



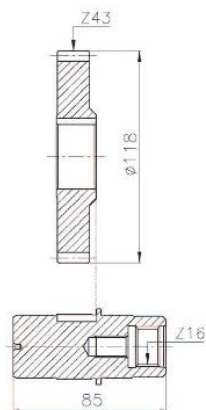
# A8VO SERIES



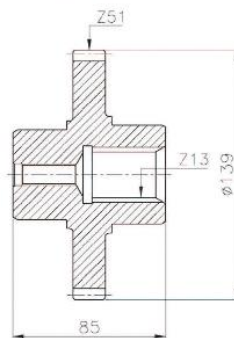
IT IS DIFFERENT SHAPE BETWEEN  
A8VO200(CAT TYPE) AND A8VO200(DX TYPE)



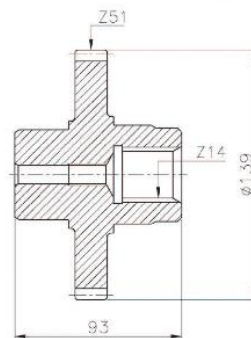
CAT TYPE-16T



FIAT TYPE-13T



FIAT TYPE-14T



IT IS DIFFERENT IDLE GEAR FOR A8VO107