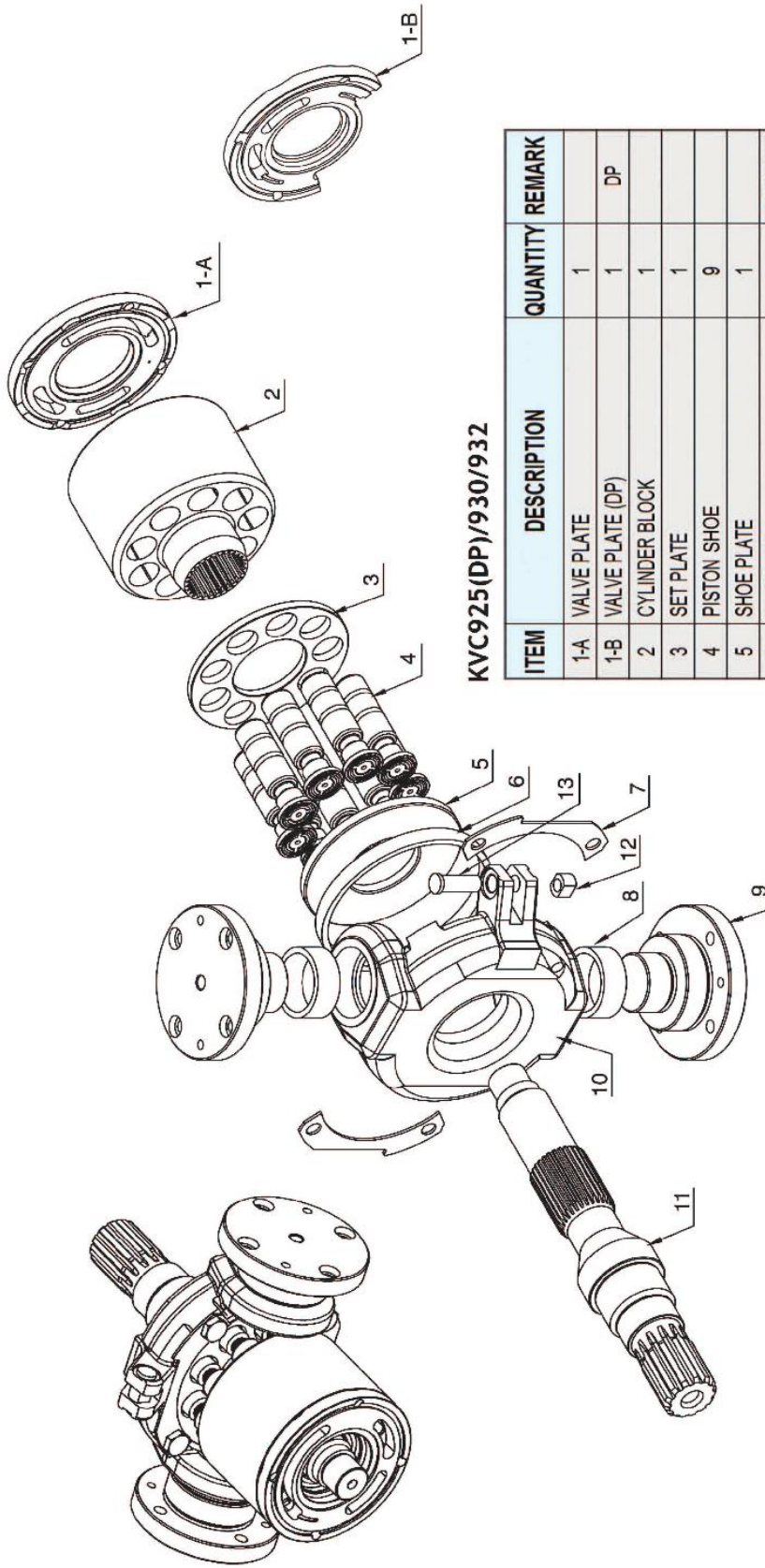


KVC SERIES



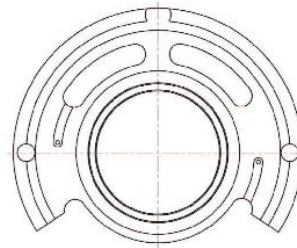
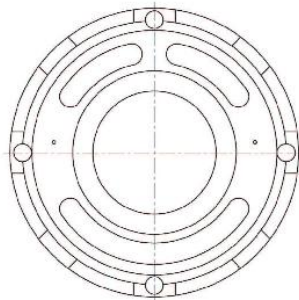
KVC925(DP)/930/932

ITEM	DESCRIPTION	QUANTITY	REMARK
1-A	VALVE PLATE	1	
1-B	VALVE PLATE (DP)	1	DP
2	CYLINDER BLOCK	1	
3	SET PLATE	1	
4	PISTON SHOE	9	
5	SHOE PLATE	1	
6	GUIDE RING	1	KVC930/932
7	FIX PLATE	2	
8	AXLE BUSHING	2	
9	AXLE SHAFT	2	
10	SWASH PLATE	1	
11	DRIVE SHAFT	1	
12	GUIDE PIECE	1	KVC925
13	PIN OF SWASH PLATE	1	KVC925/932

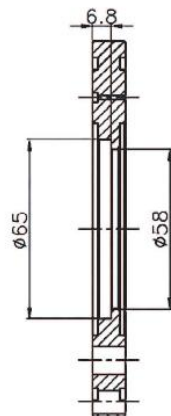
HAN DOK HYDRAULIC



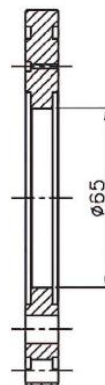
KVC SERIES



DP-TYPE



(UH07-3)



(UH07-5)

IT IS DIFFERENT SHAPE BETWEEN UH07-3 TYPE AND UH07-5 TYPE OF VALVE PLATE