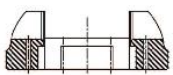
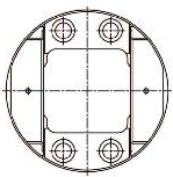
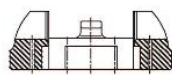
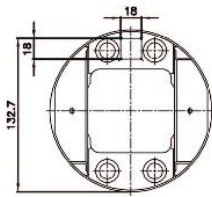




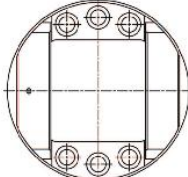
HPV95/132/140/165/375



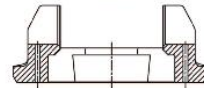
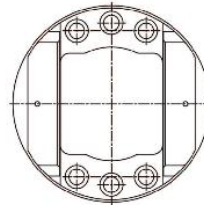
HPV95C
(PC200-6)



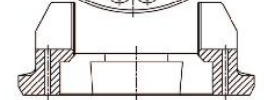
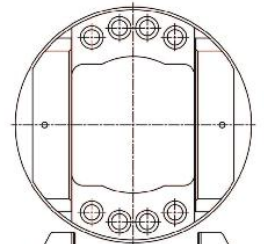
HPV95A
(PC200-7)



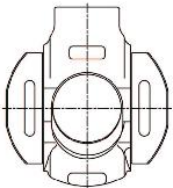
HPV140
(PC300-7&8)



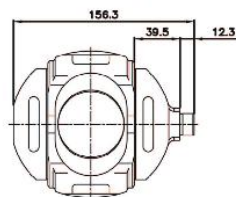
HPV132&165
(PC300-6&400-6/7)



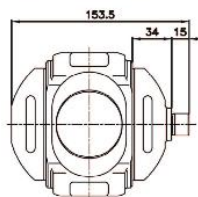
HPV375
(PC800-8)



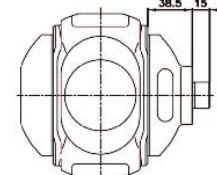
HPV95C
(PC200-6 OLD)



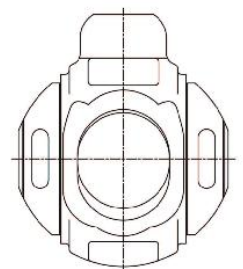
HPV95H
(PC200-6 NEW&PC200-8)



HPV95A
(PC200-7)



HPV140
(PC300-7&8)



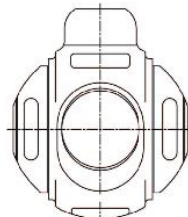
HPV375
(PC800-8)



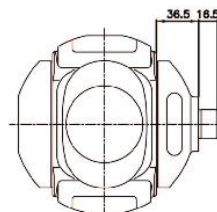
HPV95C
(PC200-6&7)



HPV95H
(PC200-8)

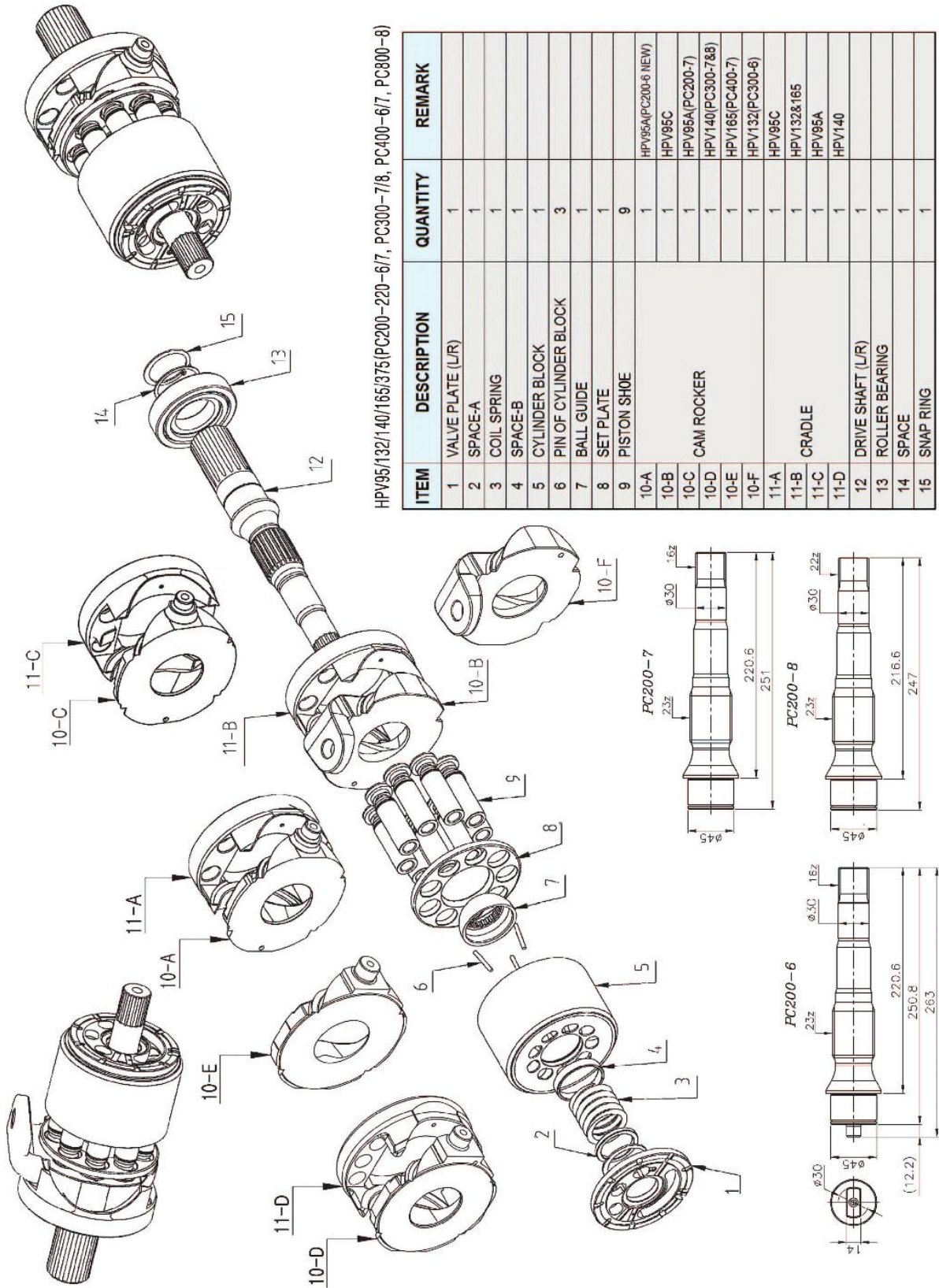


HPV95C
(PC200-6 OLD)



HPV95C
(PC200-6 OLD)

HPV95/132/140/165/375



HPV95/132/140/165/375(PC200-220-6/7, PC300-7/8, PC400-6/7, PC800-8)

ITEM	DESCRIPTION	QUANTITY	REMARK
1	VALVE PLATE (L/R)	1	
2	SPACE-A	1	
3	COIL SPRING	1	
4	SPACE-B	1	
5	CYLINDER BLOCK	1	
6	PIN OF CYLINDER BLOCK	3	
7	BALL GUIDE	1	
8	SET PLATE	1	
9	PISTON SHOE	9	
10-A		1	HPV95A(PC200-6 NEW)
10-B		1	HPV95C
10-C		1	HPV95A(PC200-7)
10-D	CAM ROCKER	1	HPV140(PC300-7&8)
10-E		1	HPV165(PC400-7)
10-F		1	HPV132(PC300-6)
11-A		1	HPV95C
11-B	CRADLE	1	HPV132&165
11-C		1	HPV95A
11-D		1	HPV140
12	DRIVE SHAFT (L/R)	1	
13	ROLLER BEARING	1	
14	SPACE	1	
15	SNAP RING	1	

HAN DOK HYDRAULIC