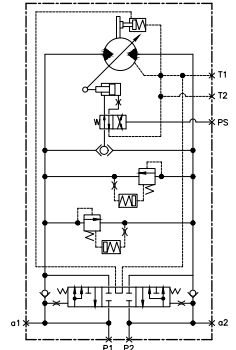


SPECIFICATION	WORKING CONDITION		
	1 SPEED	2 SPEED	
THERETICAL DISPLACEMENT (cc/rev)	max 160	160.SLOW	102.FAST
SET PRESSURE OF RELIEF VALVE (kgf/cm ²)	max 350	300	
REVOLUTION PER MINUTE (rpm)	max 2,800	1,000	1,553
INPUT FLOW (l/min)	160	←	
2SPEED CONTROL PRESSURE (kgf/cm ²)	20	←	
BRAKING TORQUE (kgf/m)	41	←	
BRAKE RELEASE PRESSURE (kgf/cm ²)	8	←	
SET PRESSURE OF MAIN SPOOL	START : 10.8kgf/cm ² . END 17.2kgf/cm ²		
PRESSURE OF CHECK V/V CRACKING (kgf/cm ²)	1.0 ~ 1.2 kgf/cm ²		
PRESSURE OF RELIEF V/V CRACKING (kgf/cm ²)	OVER 300 (at 0.5~1.0 L/min) UNDER 350 (at 15 L/min)		
MASS (kg)	142		



- NOTE
1. Fill the motor casing with operating oil before starting.
 2. Seal test : Seal the motor and apply an air pressure of 7kgf/cm² inside it. Place it in a water tank and make sure it does not leak for 3 minutes.
 3. The permissible pressure of MOTOR CASE is below 1.5kgf/cm².
 4. The size of the drain pipe must be determined to prevent the internal pressure of the motor casing from exceeding 0.5Mpa (1.5kgf/cm²).
[(Allowable surge pressure is 5kgf/cm²)]