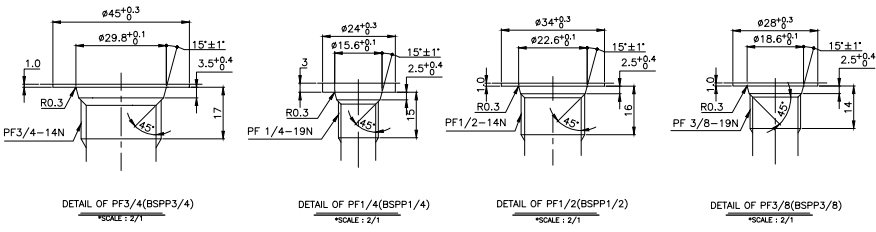
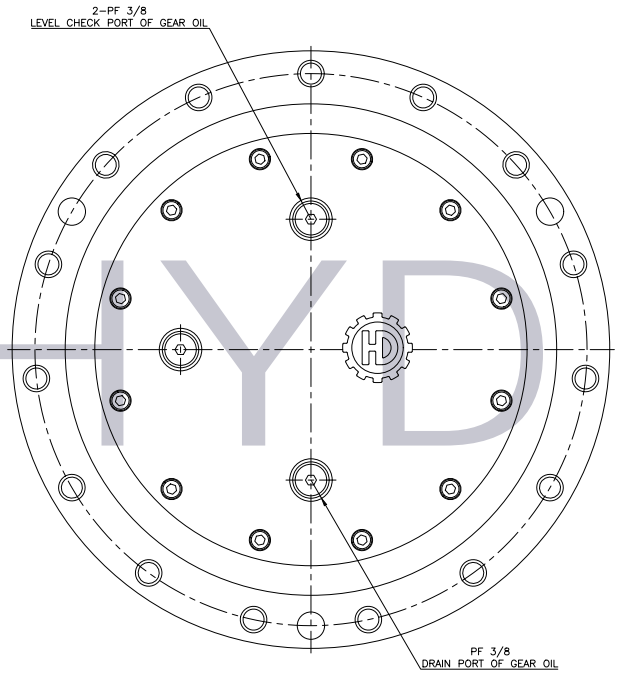
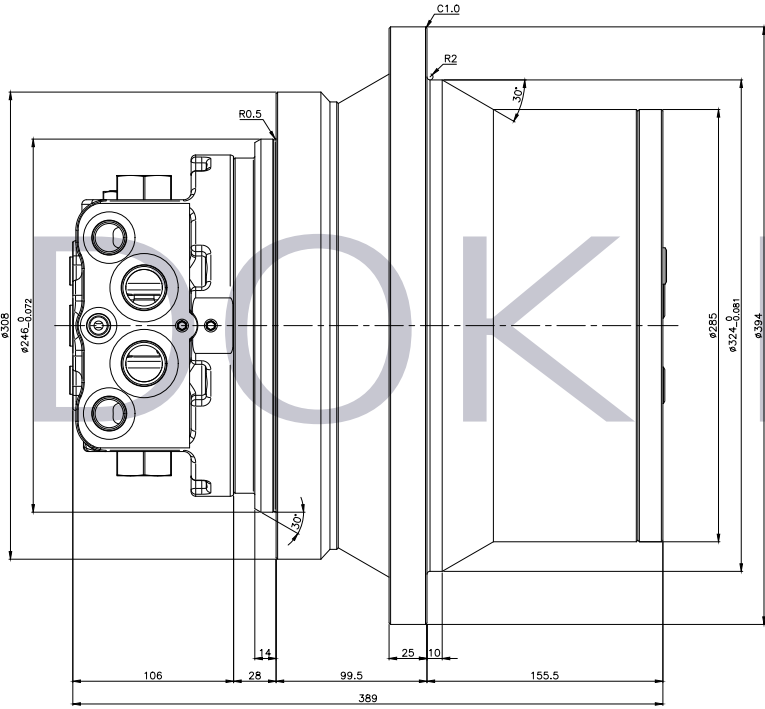
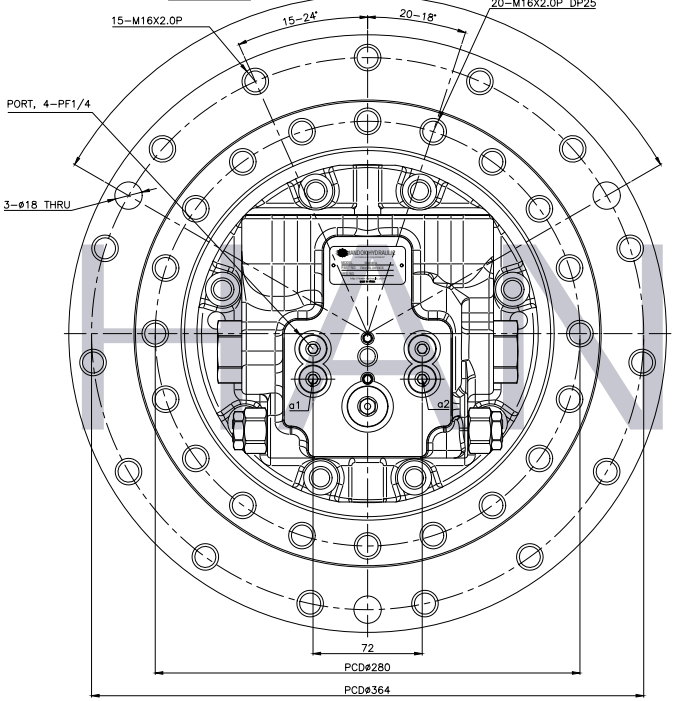
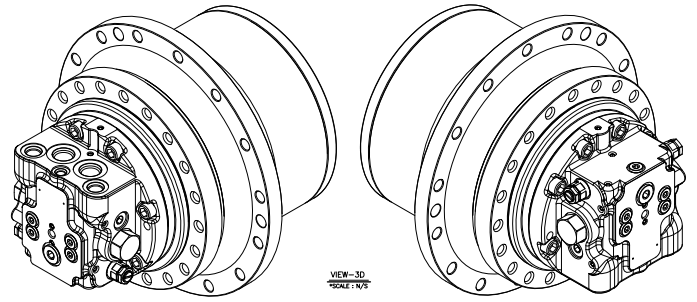
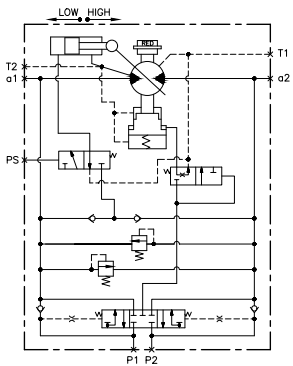
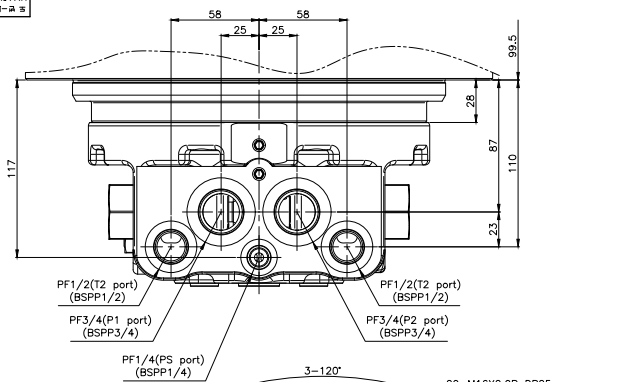




HANDOK HYDRAULIC CO

REV. NO.	DATE	DESCRIPTION	DWG. BY	REV. BY	APP. BY	REVISION NO.
1	14.05.17	APPROVAL				



		WORKING CONDITION		
		1 SPEED	2 SPEED	
REDUCTION GEAR	GEAR RATIO	53		
	OUTPUT TORQUE (kgf.m)	max.1850	2349.1 1377.8	
	OUTPUT SPEED (r.p.m)	max.60	21.341 36.388	
	TOTAL DISPLACEMENT (cc/rev)	max.85	79.6 46.7	
HYDRAULIC MOTOR	SET PRESSURE OF RELIEF VALVE (kgf/cm <sup>2</sup> )	max.300 270		
	INPUT FLOW (l/min)	90		
	2SPEED CONTROL PRESSURE (kgf/cm <sup>2</sup> )	20-70	←	
	THEORETICAL BRAKE TORQUE (kgf.m)	min. 19.7	←	
	BRAKE RELEASE PRESSURE (kgf/cm <sup>2</sup> )	9.5	←	
AMOUNT OF GEAR OIL (L)	1.6	←		

- NOTE.
- ONE SIDE(T1 or T2) OF THE MOTOR DRAIN PORTS IS PLUGGED. WHEN MOUNTING THE HM MOTOR TO THE EXCAVATOR, MOUNT THE PLUGGED DRAIN PORT DOWN. AND THEN, CONNECT THE DRAIN PIPING TO THE UPPER NON-PLUGGED DRAIN PORT.
  - ALLOWABLE PRESSURE OF THE MOTOR CASE IS 1.5kgf/cm BELOW. THE DRAIN PIPING SHOULD BE PROPERLY SIZED TO KEEP THE INNER PRESSURE OF THE MOTOR CASE IS NOT OVER 0.5Mpa(1.5kgf/cm<sup>2</sup>) (ALLOWABLE SURGE PRESSURE IS 5kgf/cm<sup>2</sup>)
  - DIRECTION OF ROTATION
- | DIRECTION(VIEW X) | INLET PORT | OUTPUT PORT |
|-------------------|------------|-------------|
| CLOCKWISE         | P1         | P2          |
| COUNTER CLOCKWISE | P2         | P1          |
- PAINTING OF THE OUTSIDE SHOULD BE BLACK COLOR.

HM18VA

SCALE: 1/1

DATE: 2014.05.17 UNIT: mm

HAN DOK HYDRAULIC

HM18VA-SPE-01