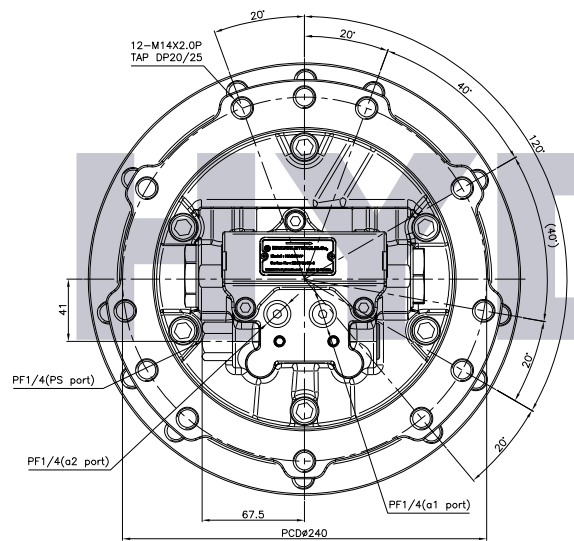
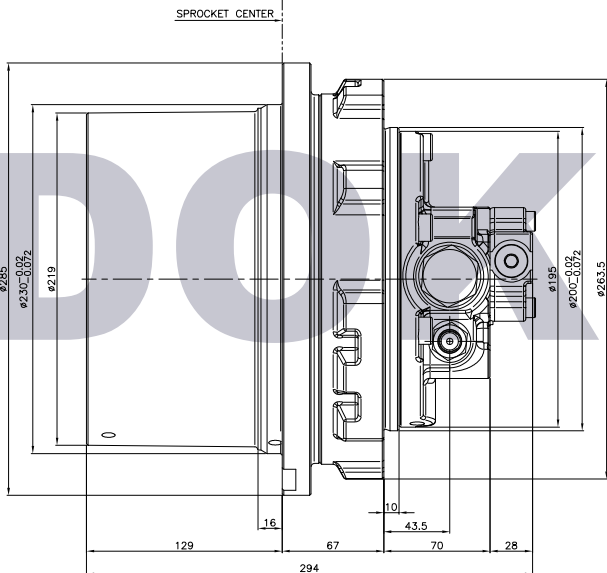
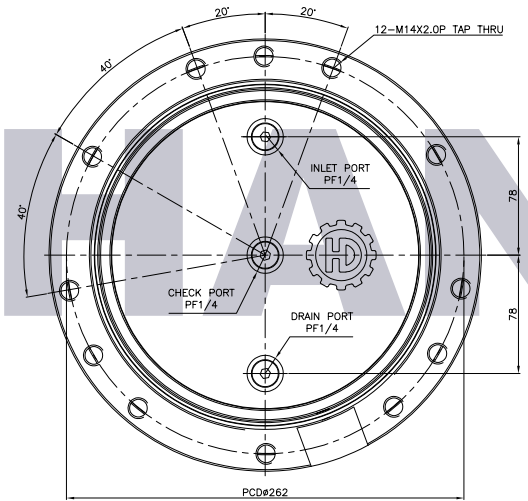
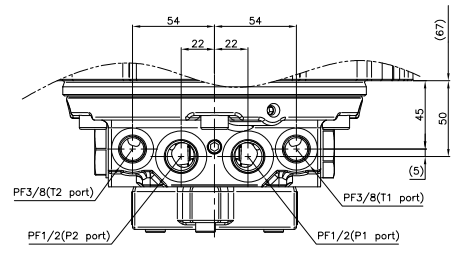
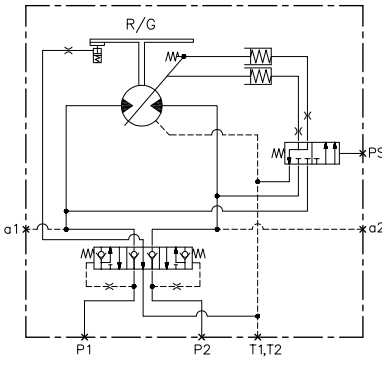
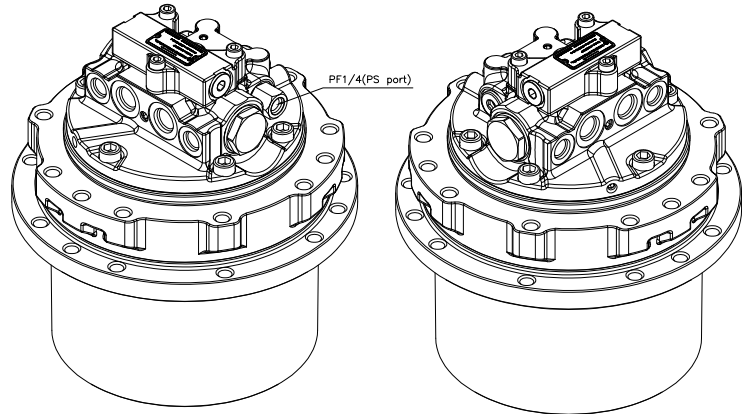


HANDOK HYDRAULICS CO

NO.	DATE	DESCRIPTION	DWG. BY	REV. BY	APP. BY	REVISION NO.
1	15.02.24	APPROVAL				

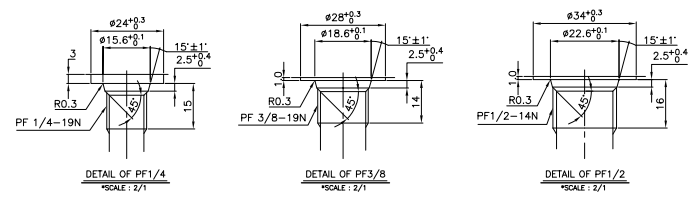


SPECIFICATION

MAX. OUTPUT TORQUE	(N.m)	5390
MAX. TOTAL DISPLACEMENT	(Cm ³ /rev)	1992
MAX. MOTOR DISPLACEMENT	(Cm ³ /rev)	33.8
GEAR RATIO		58.943
MAX. SPEED	(r.p.m)	60
MAX. SHAFT SPEED	(r.p.m)	3300
SPEED RATIO HIGH / LOW		MAX2.0
MAX.FLOW	(L/min)	60
MAX. PRESSURE	(MPa)	27.5
MECHANICAL BRAKE(MOTOR)	(N.m)	49
MASS	(Kg)	60

- NOTE.
- ONE SIDE(T1 or T2) OF THE MOTOR DRAIN PORTS IS PLUGGED. WHEN MOUNTING THE HAG MOTOR TO THE EXCAVATOR, MOUNT THE PLUGGED DRAIN PORT DOWN. AND THEN, CONNECT THE DRAIN PIPING TO THE UPPER NON-PLUGGED DRAIN PORT.
 - ALLOWABLE PRESSURE OF THE MOTOR CASE IS 1.5kgf/cm BELOW. THE DRAIN PIPING SHOULD BE PROPERLY SIZED TO KEEP THE INNER PRESSURE OF THE MOTOR CASE IS NOT OVER 0.5Mpa(1.5kgf/cm²) {ALLOWABLE SURGE PRESSURE IS 5kgf/cm²}
 - DIRECTION OF ROTATION

DIRECTION(VIEW X)	INLET PORT	OUTPUT PORT
CLOCKWISE	P1	P2
COUNTER CLOCKWISE	P2	P1



NO.	TRAVEL MOTOR		1	
NAME	HAG33VP			
DATE	2015.02.24	UNIT	mm	