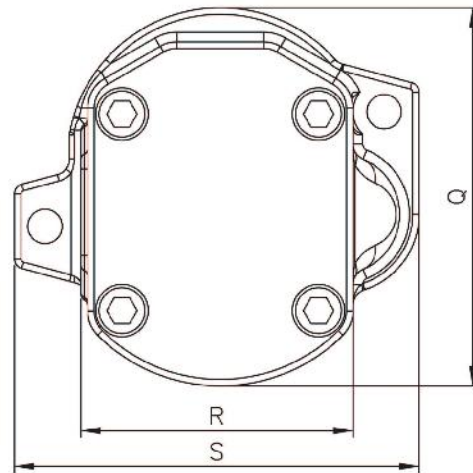
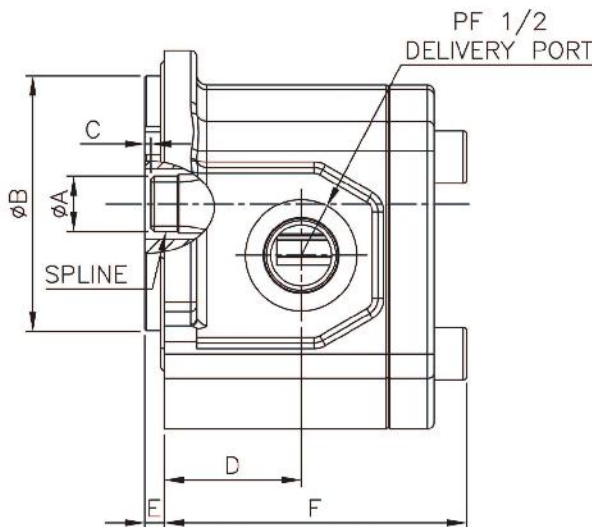
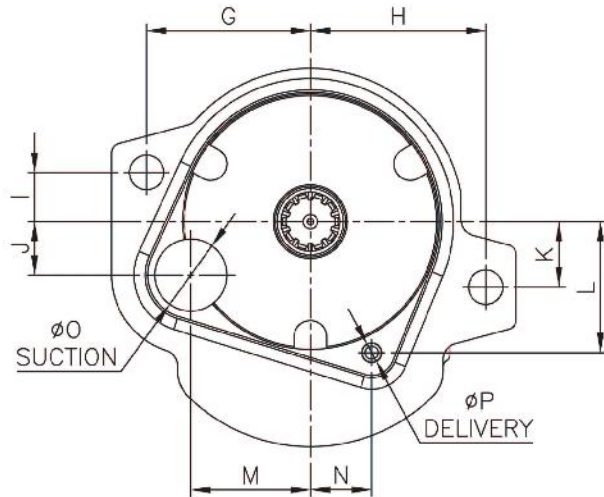
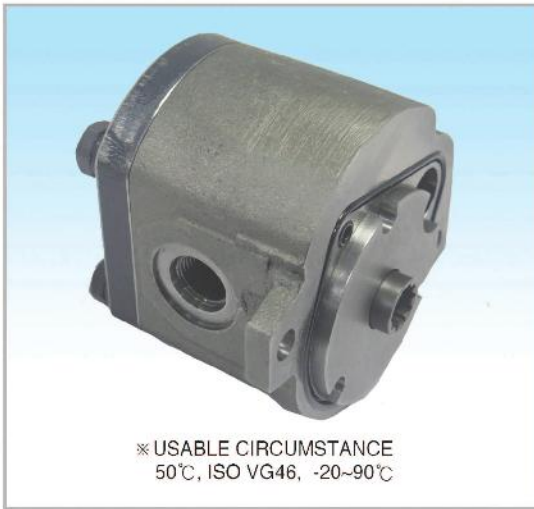


AP2D SERIES SINGLE TYPE GEAR PUMP



SPECIFICATIONS

MODEL	AP2D10 / 12 / 14 / 16 / 18
Discharge Rate(cc/rev)	P1
	6.5 / 9 / 10.5
Max. Pressure(kg/cm²)	210
Max. Speed(rpm)	2800



DIMENSIONS

(mm)

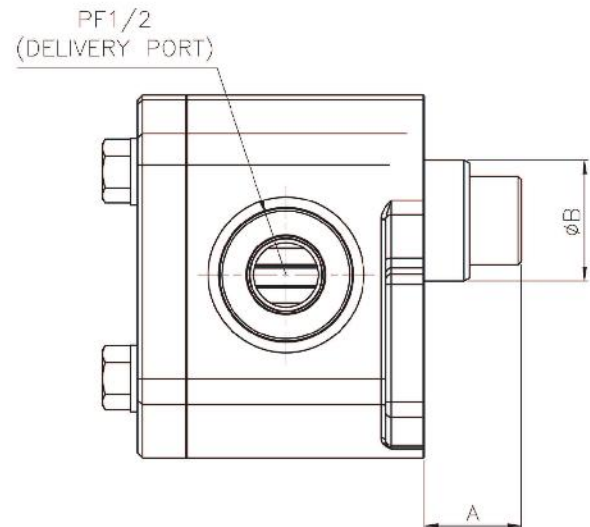
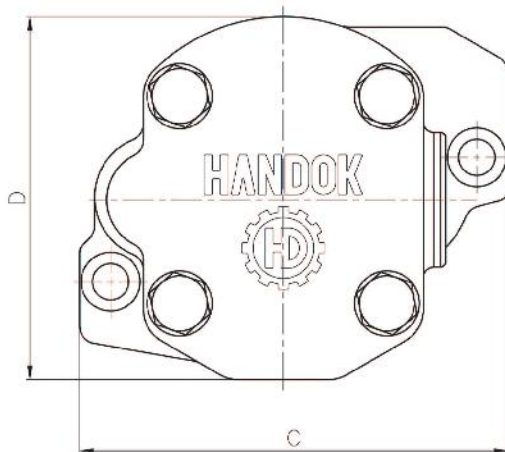
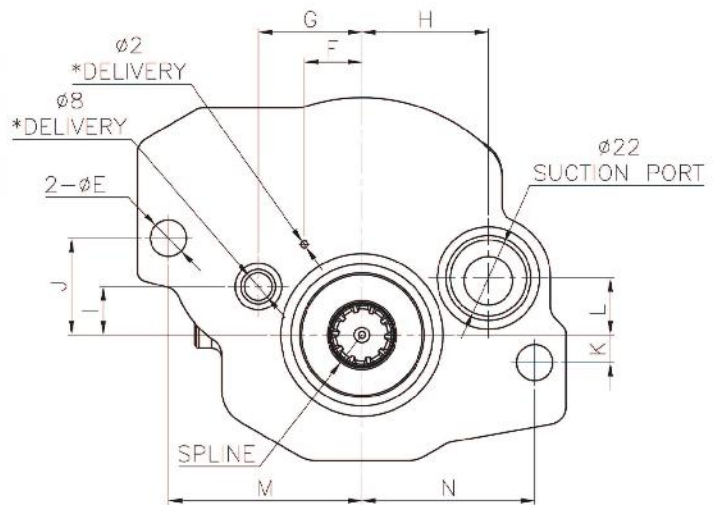
MODEL	SPLINE	A	B	C	D	E	F	G	H	I	J	K	L	M	N	O	P	Q	R	S
AP2D SERIES	Z10	17	78	2	41.8	6	92.3	50	53.5	15	16.3	20	40	36.5	18.7	22	4	115.5	83	123.5

AP2D SERIES SINGLE TYPE GEAR PUMP



SPECIFICATIONS

MODEL	AP2D21 / 25 / 28 / 36			
Discharge Rate(cc/rev)	P1			
	12	16.8	18.8	22
Max. Pressure(kg/cm²)	210			
Max. Speed(rpm)	2200/2600/2800			



DIMENSIONS

(mm)

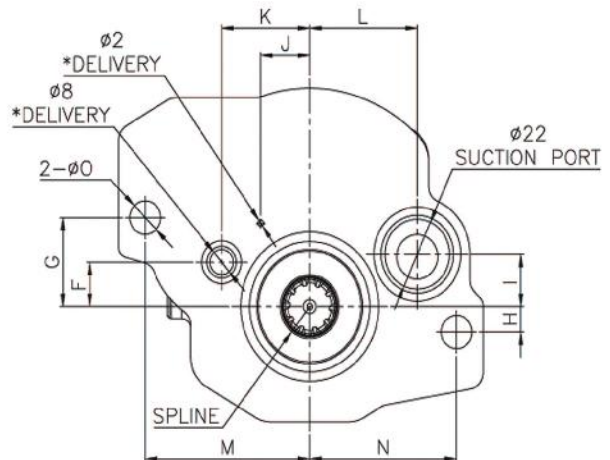
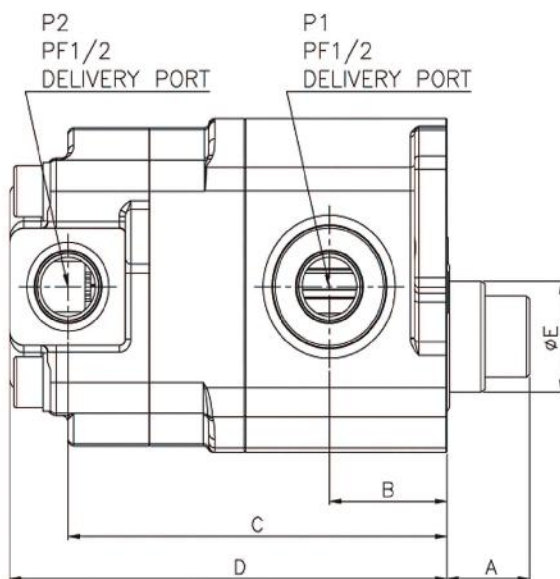
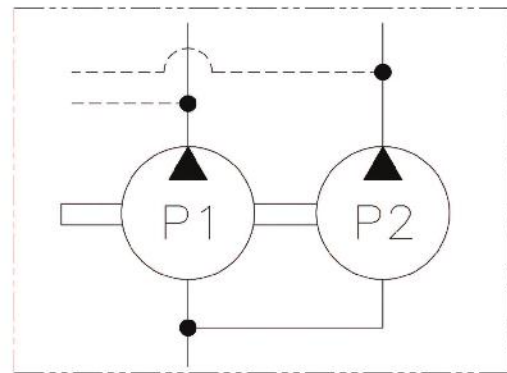
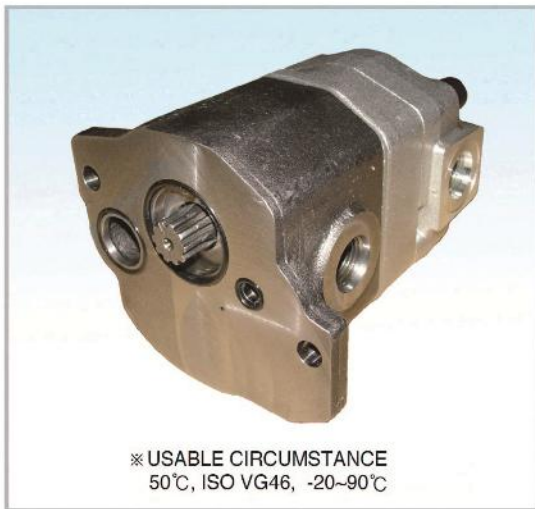
MODEL	A	B	C	D	E	F	G	H	I	J	K	L	M	N	SPLINE
AP2D SERIES	28.6	35	124	105	10.5	16.7	30	36.6	14	28	8	16.5	56	50	Z10

AP2D SERIES DOUBLE TYPE GEAR PUMP



SPECIFICATIONS

MODEL	AP2D21 / 25 / 28 / 36						
Discharge Rate(cc/rev)	P1				P2		
	12	16.8	18.8	22	6	9	10
Max. Pressure(kg/cm²)	210				50		
Max. Speed(rpm)	2200/2600/2800						



DIMENSIONS

(mm)

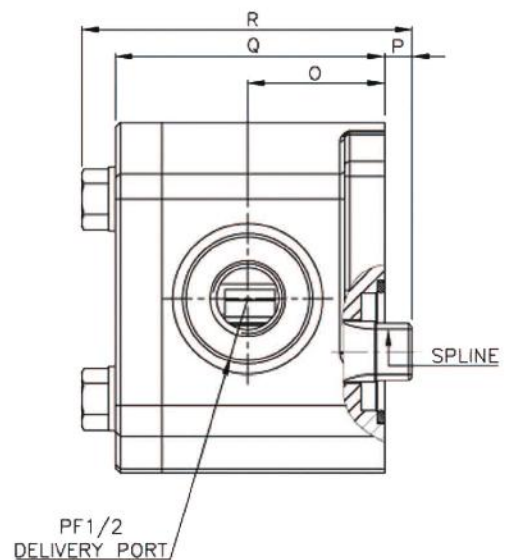
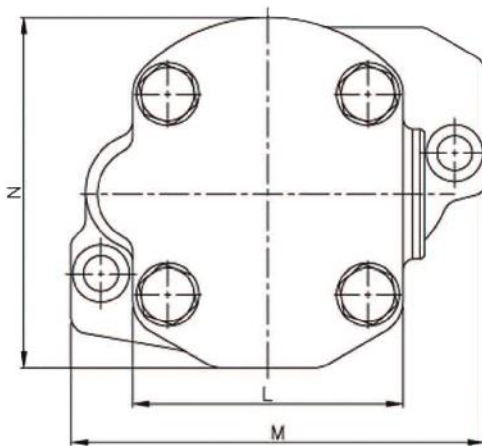
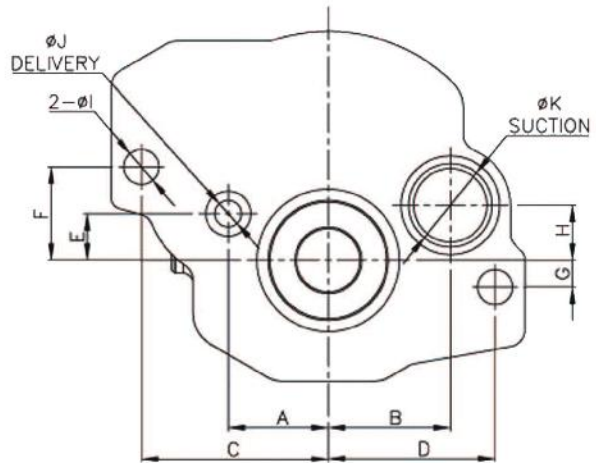
MODEL	A	B	C	D	E	F	G	H	I	J	K	L	M	N	O	SPLINE
AP2D SERIES	28.2	40	129	149	35	14	28	8	16.5	16.7	30	36.6	56	50	10.5	Z10

AP2D SERIES SINGLE TYPE GEAR PUMP



SPECIFICATIONS

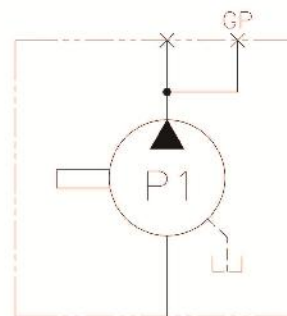
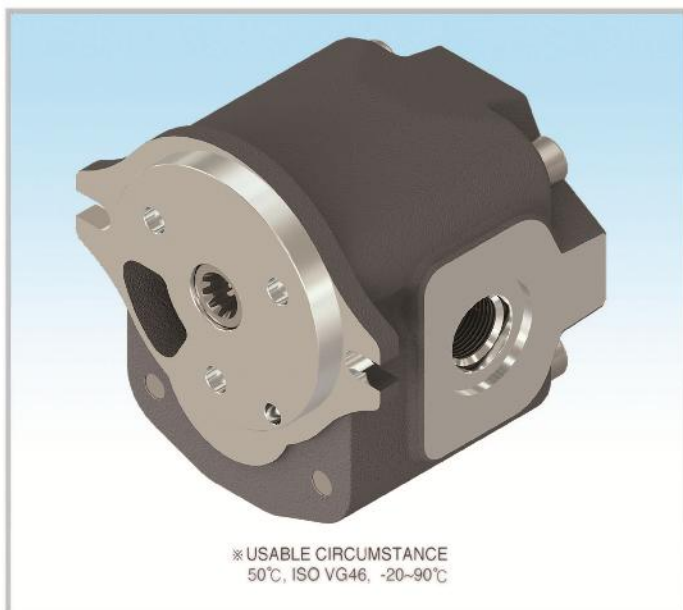
MODEL	AP2D21/25/28/36
Discharge Rate (cc/rev)	9
Max. Pressure (kg/cm²)	210
Max. Speed (rpm)	2200



DIMENSIONS

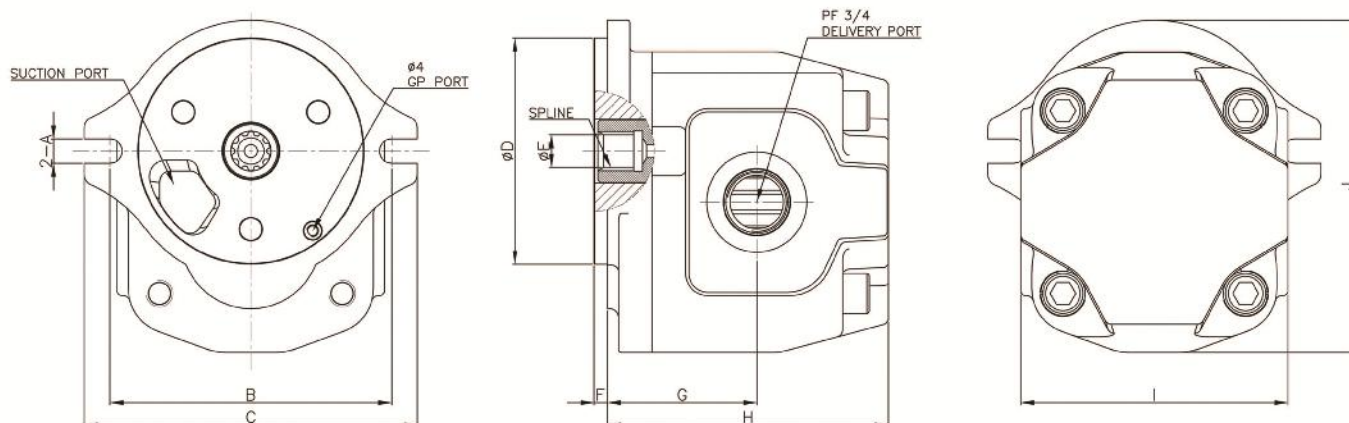
MODEL	A	B	C	D	E	F	G	H	I	J	K	L	M	N	O	P	Q	R	SPLINE
AP2D21 AP2D25 AP2D28 AP2D36	30	36.6	56	50	14	28	8	16.5	10.5	8	22	81	124	105	41	8.3	80.7	99	Z10

AP2D36 FOR YANMAR SINGLE TYPE GEAR PUMP



SPECIFICATIONS

MODEL	AP2D36 (FOR YANMAR)	
Discharge Rate(cc/rev)	25	30
Max.Pressure(kg/cm ²)	214	
Max.Speed(rpm)	2,800	
Direction	CW	

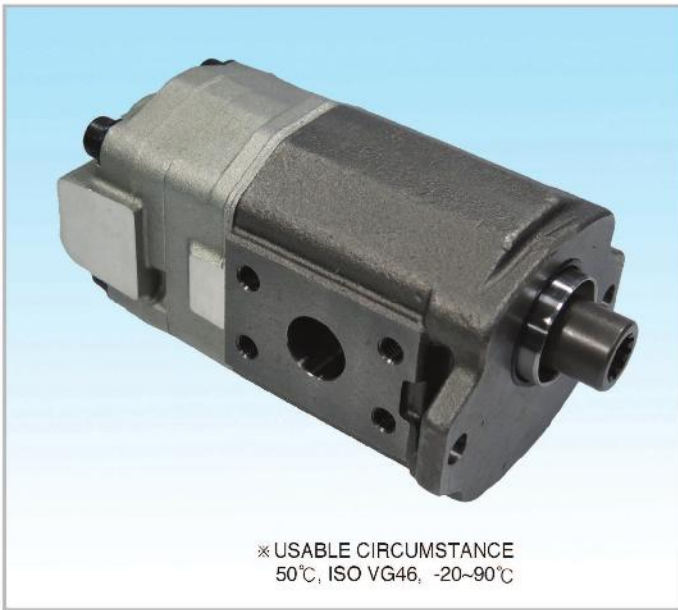


DIMENSIONS

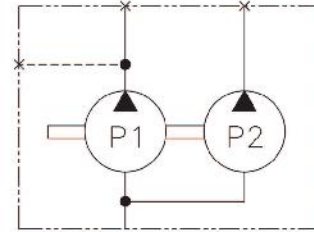
(mm)

MODEL	A	B	C	D	E	F	G	H	I	J	SPLINE
AP2D36 (FOR YANMAR -25cc/rev)	11	126.4	149.5	101.6	14.6	6	60.5	121	120	149.2	10T
AP2D36 (FOR YANMAR-30cc/rev)							67	126			

AP2D25/28/36/38 FOR HITACHI DOUBLE TYPE GEAR PUMP



※ USABLE CIRCUMSTANCE
50°C, ISO VG46, -20~90°C

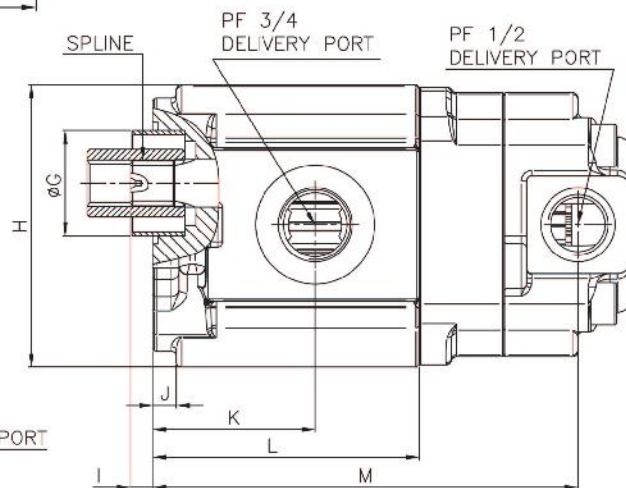
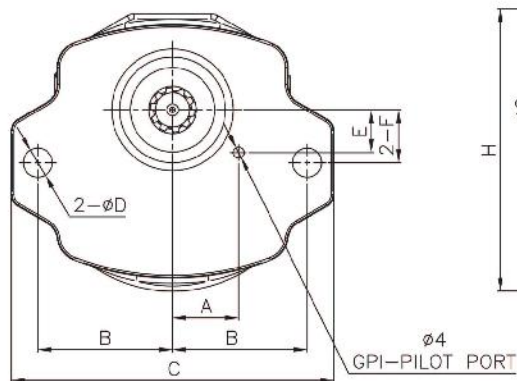
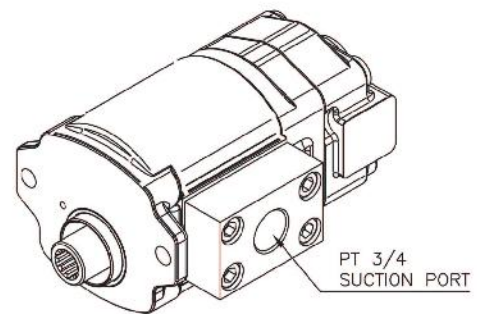
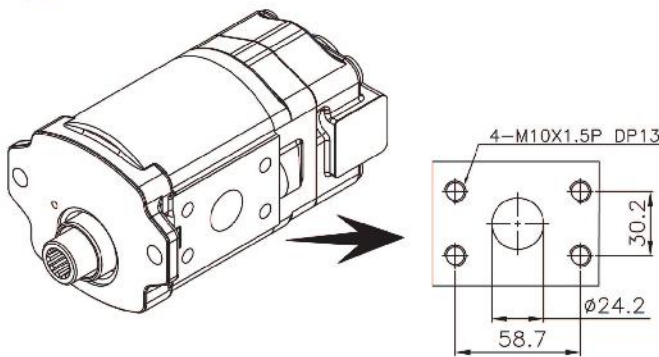


SPECIFICATIONS

MODEL	AP2D25/28/36/38 (FOR ZX60 & ZX75)	
Discharge Rate (cc/rev)	P1	P2
	21	11
Max. pressure (kg/cm ²)	210	50
Max. Speed (rpm)	2100	

ZX60 SUCTION PORT (for AP2D25/28)

ZX75 SUCTION PORT (for AP2D36/38)



DIMENSIONS

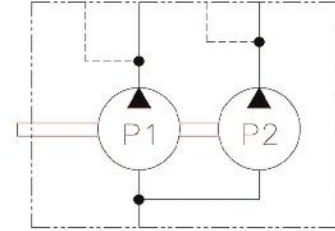
(mm)

MODEL	A	B	C	D	E	F	G	H	I	J	K	L	M	SPLINE
AP2D25/28/36/38 (FOR ZX60&ZX75&CAT307)	25	51	122	11	16.2	20	40	107	8.5	11	61.5	101	161	Z10

AP2D10/12/14/16/18 DOUBLE TYPE GEAR PUMP

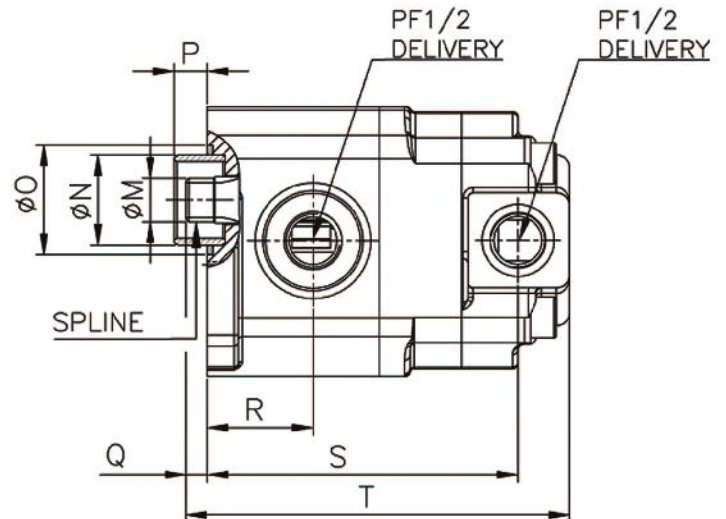
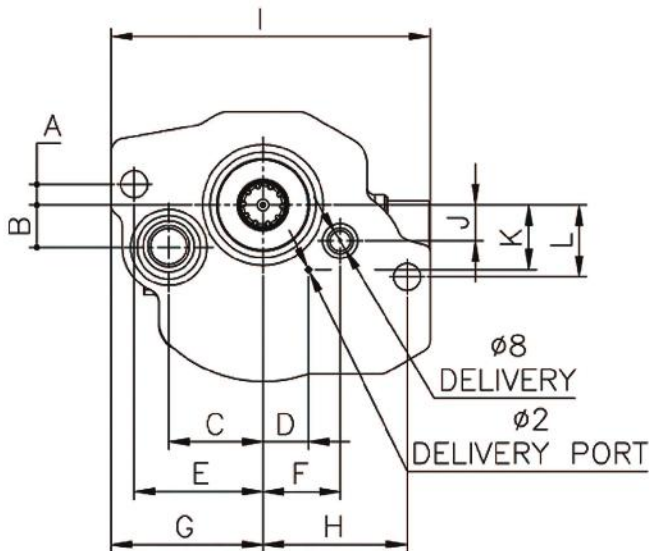


※ USABLE CIRCUMSTANCE
50°C, ISO VG46, -20~90°C



SPECIFICATIONS

MODEL	AP2D10/12/14/16/18 (FOR UCHIDA)	
	P1	P2
Discharge Rate (cc/rev)	8	4
Max. pressure (kg/cm ²)	255	50
Max. Speed (rpm)	2800	

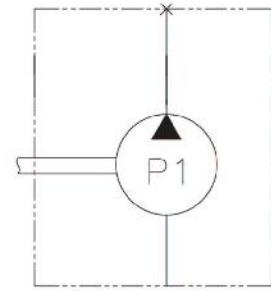
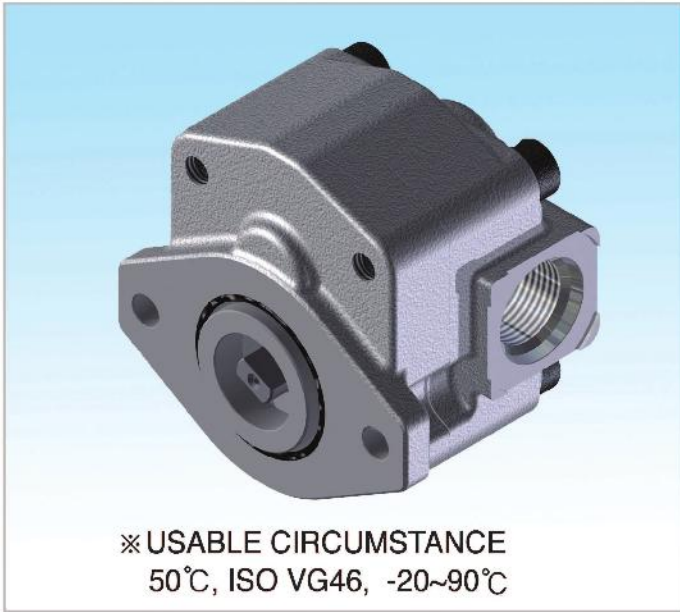


DIMENSIONS

(mm)

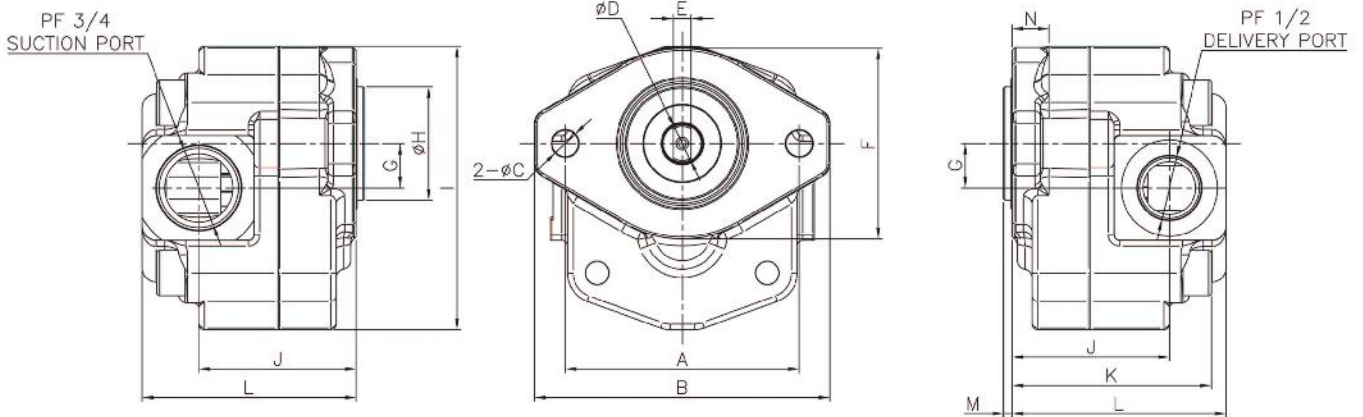
MODEL	A	B	C	D	E	F	G	H	I	J	K	L	M	N	O	P	Q	R	S	T	SPLINE
AP2D10 /12/14 AP2D16/18	8	16.5	36.6	17.7	50	30	59	56	124	14	25.2	28	17	35	42.7	13	8.3	41	120.6	149	Z10

A10VD43 SINGLE TYPE GEAR PUMP



SPECIFICATIONS

MODEL	A10VD43(KEY TYPE)
Discharge Rate (cc/rev)	9 / 10.5
Max. Pressure (kg/cm²)	50
Max. Speed (rpm)	2000

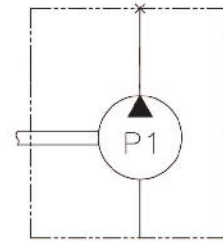


DIMENSIONS

(mm)

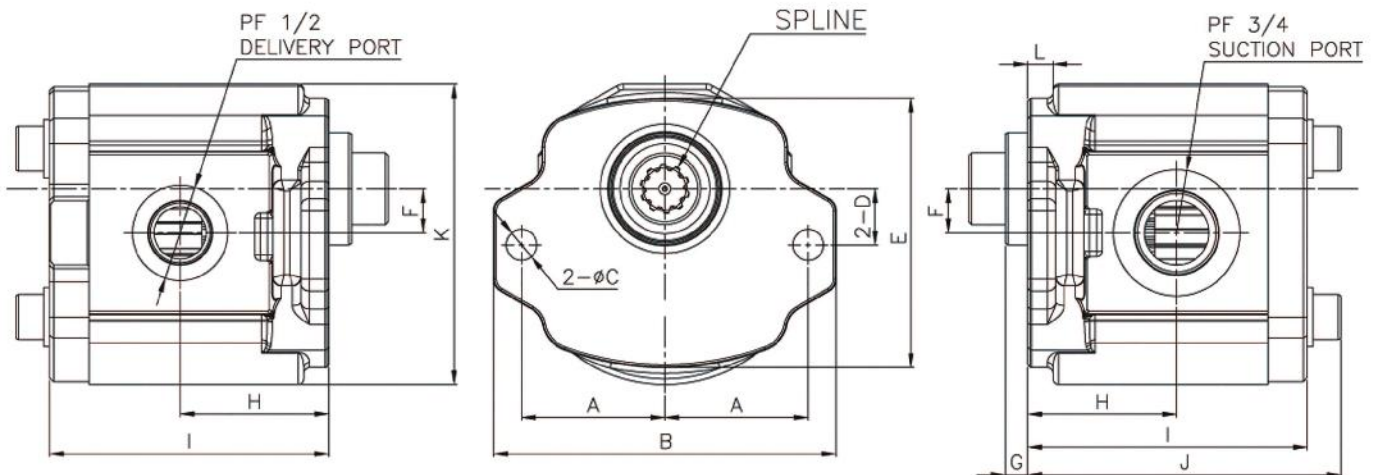
MODEL	A	B	C	D	E	F	G	H	I	J	K	L	M	N
A10VD43(KEY TYPE)	82.5	104	9.3	13	6.3	67.3	15.7	40	100	55.5	70.3	75.5	3	13

A10VD43 SINGLE TYPE GEAR PUMP



SPECIFICATIONS

MODEL	A10VD43
Discharge Rate (cc/rev)	12
Max. Pressure (kg/cm²)	180
Max. Speed (rpm)	2800

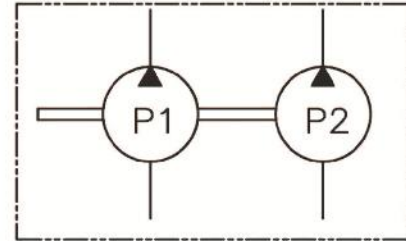


DIMENSIONS

(mm)

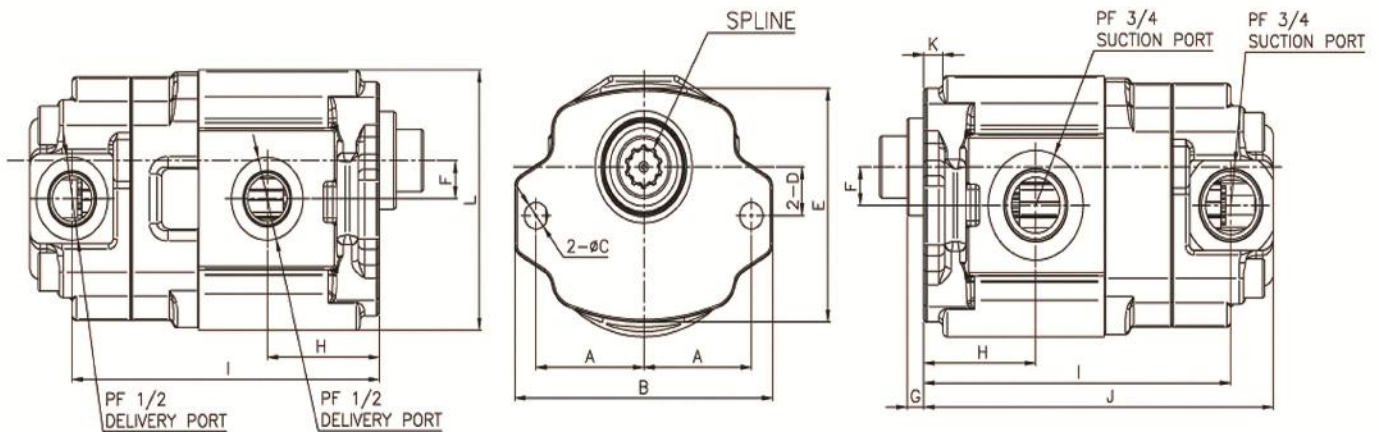
MODEL	A	B	C	D	E	F	G	H	I	J	K	L	SPLINE
A10VD43	51	122	11	20	96	15.7	8	53	99.5	112	107	10	Z10

A10VD43 DOUBLE TYPE GEAR PUMP



SPECIFICATIONS

MODEL	A10VD43	
Discharge Rate (cc/rev)	P1	P2
	12	10
Max. pressure (kg/cm ²)	180	50
Max. Speed (rpm)	2800	

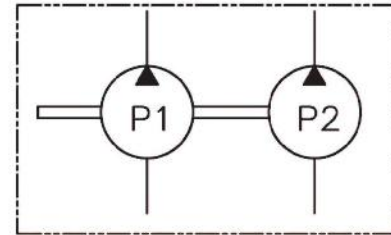


DIMENSIONS

(mm)

MODEL	A	B	C	D	E	F	G	H	I	J	K	L	SPLINE
A10VD43	51	122	11	20	96	15.7	8	53	132.5	145.5	10	107	Z10

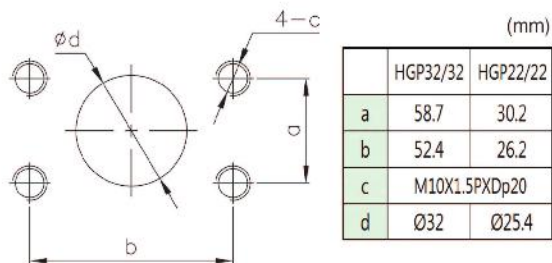
HGP32/32, 22/22 DOUBLE TYPE GEAR PUMPS



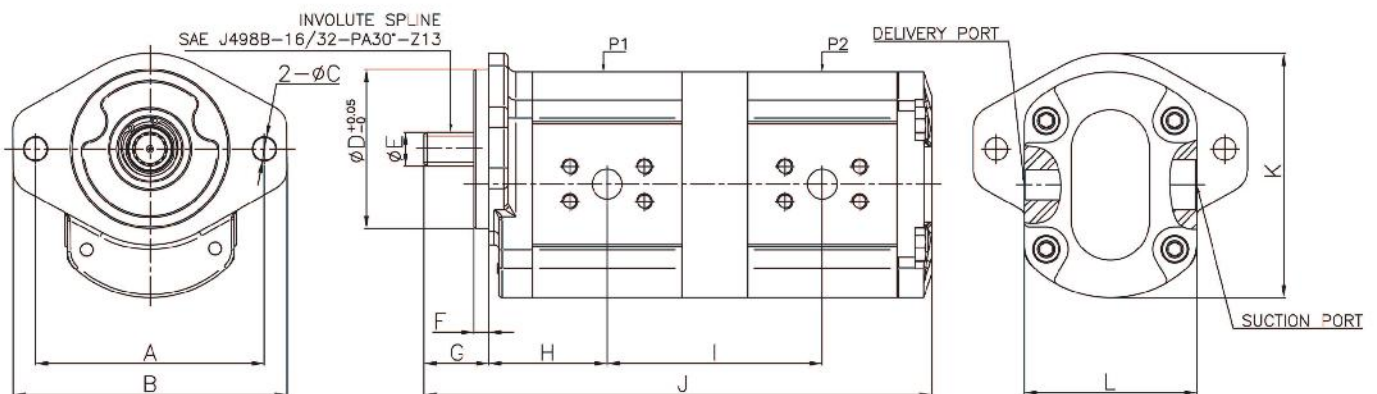
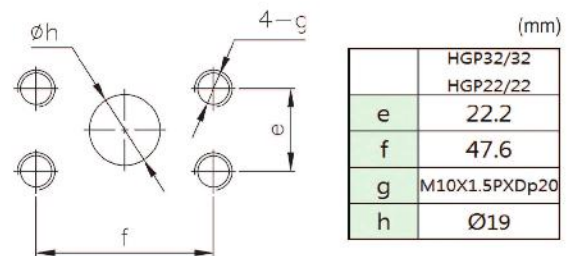
SPECIFICATIONS

MODEL	HGP32/32 , HGP22/22	
	P1	P2
Discharge Rate (cc/rev)	32	32
	22	22
Max. pressure (kg/cm ²)	250	
Max. Speed (rpm)	2800	

Flange Mounting face for Suction Port



Flange Mounting face for Delivery Port

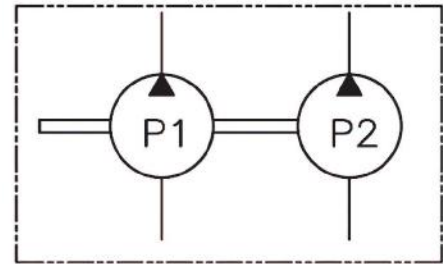
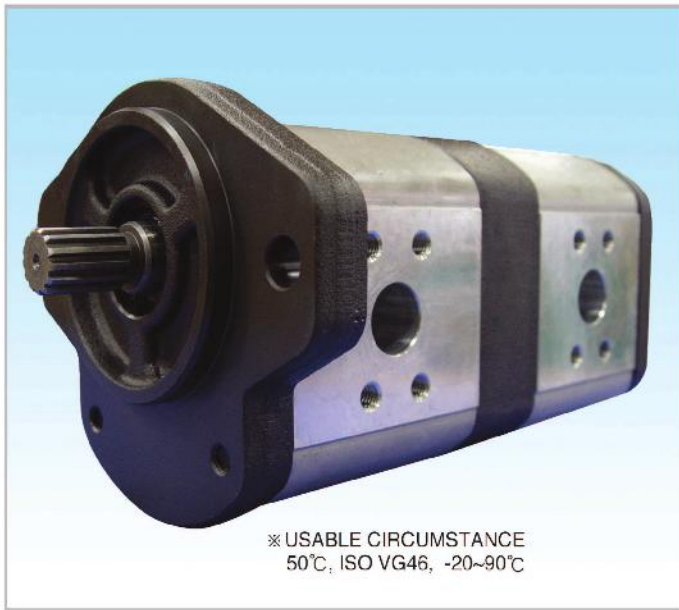


DIMENSIONS

(mm)

MODEL	A	B	C	D	E	F	G	H	I	J	K	L
HGP32/32	146	175	14.5	101.6	21.8	9.4	41.2	75.65	137.3	324.1	156	110
HGP22/22								72.5	131	311.5		

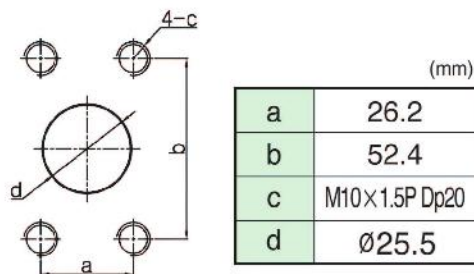
HGP32/22-A(4-PORT) TYPE DOUBLE TYPE GEAR PUMP



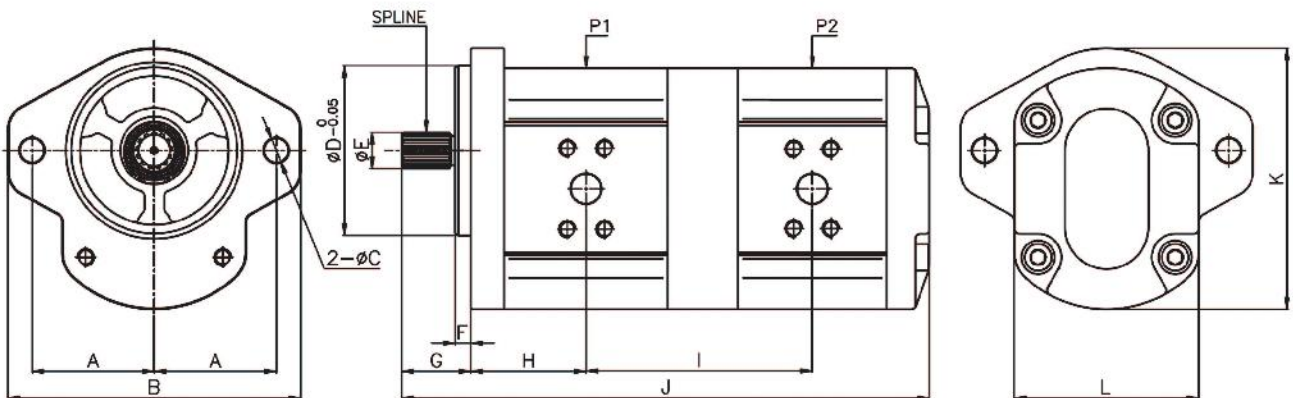
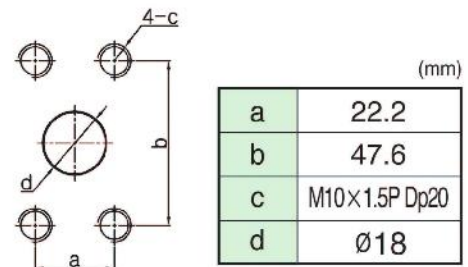
SPECIFICATIONS

MODEL	HGP32/22 A-TYPE	
Discharge Rate (cc/rev)	P1	P2
	32	22
Max. pressure (kg/cm ²)	250	
Max. Speed (rpm)	2800	

Flange Mounting face for Suction Port



Flange Mounting face for Delivery Port



DIMENSIONS

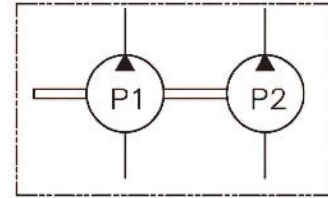
(mm)

MODEL	A	B	C	D	E	F	G	H	I	J	K	L	SPLINE
HGP32/22 (A -TYPE)	73	175	14.5	101.6	21.8	9.4	41.2	68.9	135.3	315.4	156	110	Z13

HGP32/22-B(3-PORT) TYPE DOUBLE TYPE GEAR PUMP



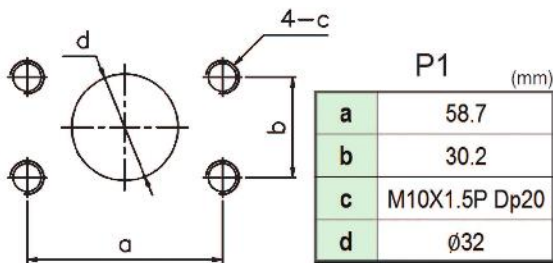
※ USABLE CIRCUMSTANCE
50°C, ISO VG46, -20~90°C



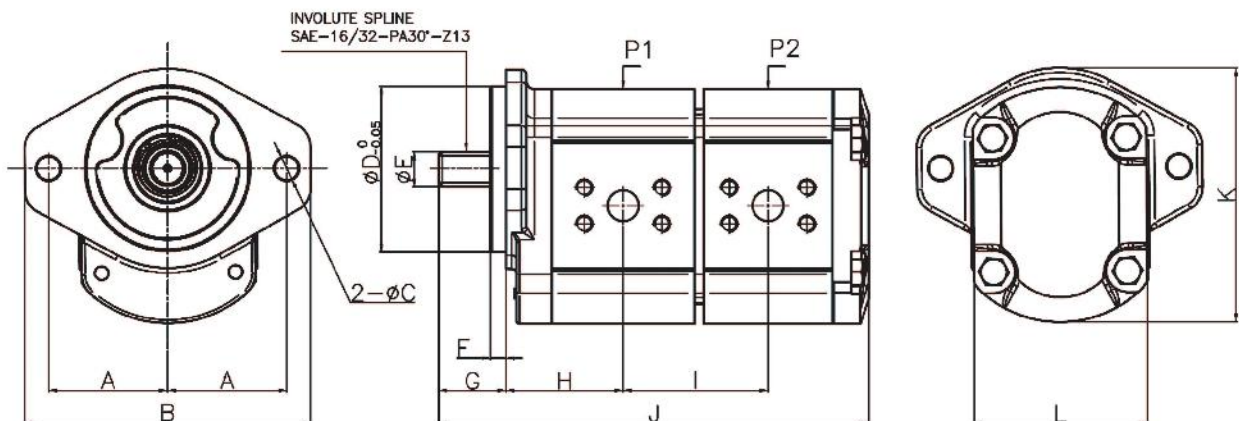
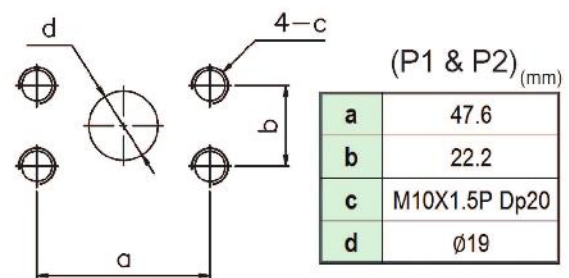
SPECIFICATIONS

MODEL	HGP32/22 B-TYPE	
Discharge Rate (cc/rev)	P1	P2
	32	22
Max. pressure (kg/cm ²)	250	
Max. Speed (rpm)	2800	

Flange Mounting face for Suction Port



Flange Mounting face for Delivery Port

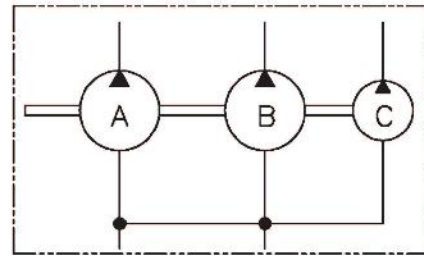


DIMENSIONS

(mm)

MODEL	A	B	C	D	E	F	G	H	I	J	K	L
HGP32/22 (B-TYPE)	73	175	14.5	101.6	22.9	9.4	41.2	71.85	88.85	263.7	156	106.4

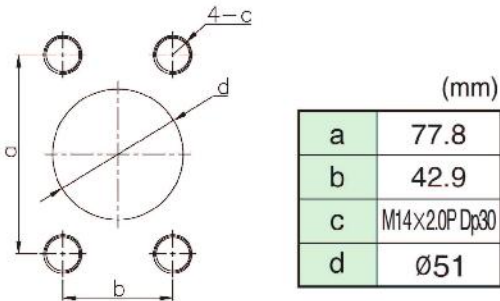
HGP66-66-16.3(DH05W-UH045W/UH052) TANDEM(SERIAL) TYPE GEAR PUMP



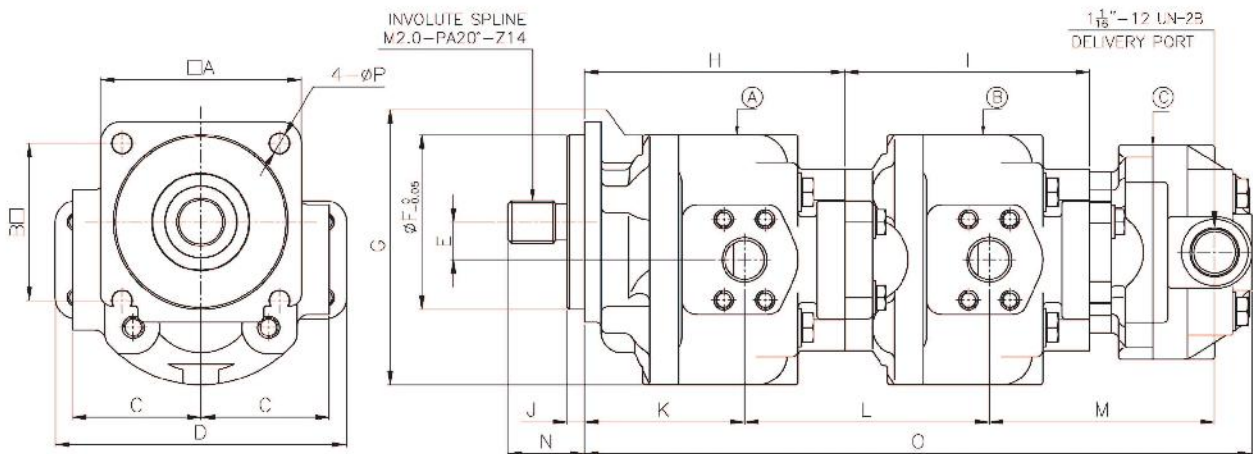
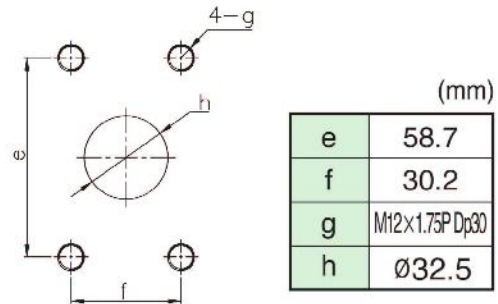
SPECIFICATIONS

MODEL	(A)	(B)	(C)
Discharge Rate (cc/rev)	66		16.3
Max. Pressure (kg/cm ²)	175		
Max. Speed (rpm)	1632		

Flange Mounting face for Suction Port



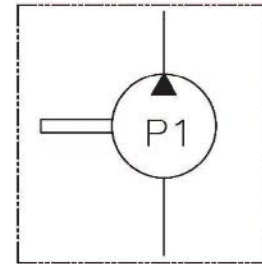
Flange Mounting face for Delivery Port



DIMENSIONS

MODEL	A	B	C	D	E	F	G	H	I	J	K	L	M	N	O
HGP 66-66-16.3	146	114.5	93.5	212	27.5	127	182	189.4	178	12.6	116.4	178	164	55.8	485.4

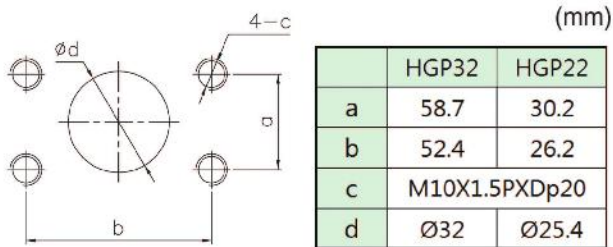
HGP32/HGP22 SINGLE TYPE GEAR PUMPS



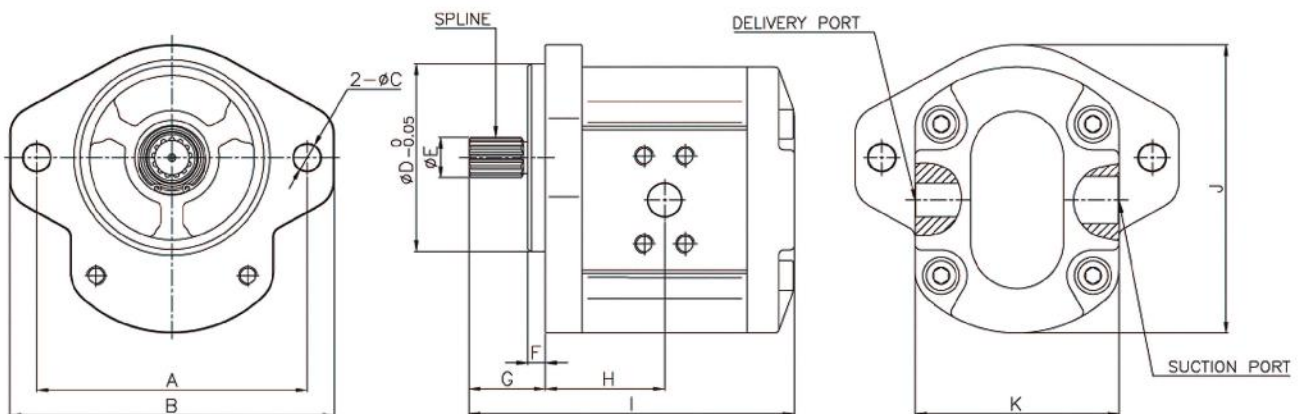
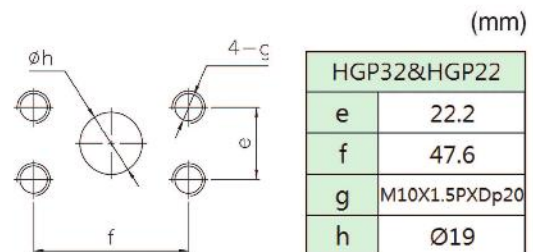
SPECIFICATIONS

MODEL	HGP32	HGP22
Discharge Rate (cc/rev)	32	22
Max. pressure (kg/cm ²)	250	
Max. Speed (rpm)	2800	

Flange Mounting face for Suction Port



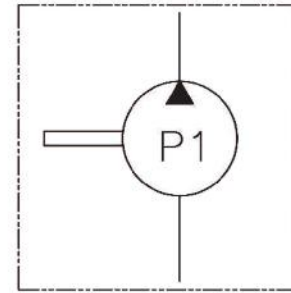
Flange Mounting face for Delivery Port



DIMENSIONS

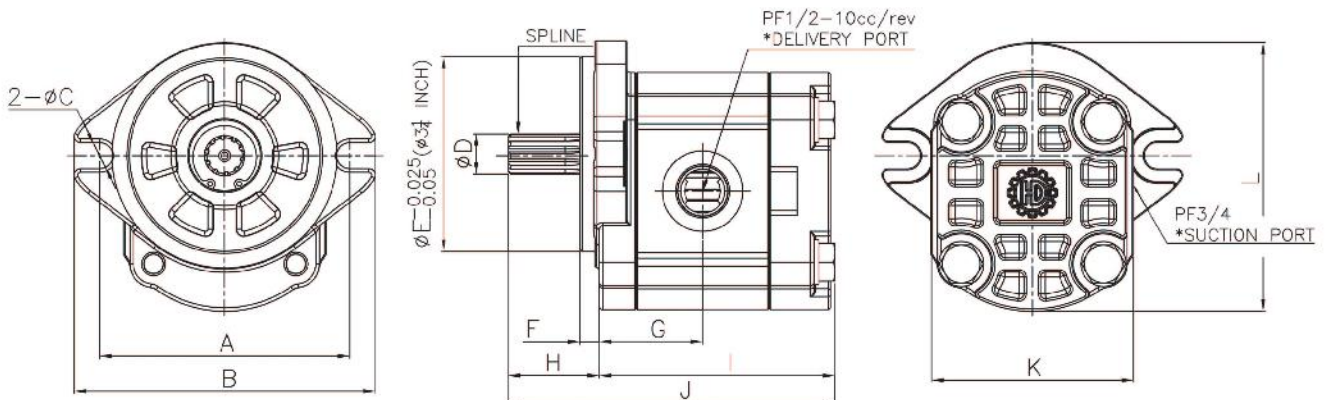
MODEL	A	B	C	D	E	F	G	H	I	J	K	SPLINE
HGP22	146	175	14.5	101.6	21.8	9.4	41.2	67.5	174	156	110	Z13
HGP32								71.85	177			

HGP10 SINGLE TYPE GEAR PUMP



SPECIFICATIONS

MODEL	HGP10
Discharge Rate (cc/rev)	10
Max. Pressure (kg/cm²)	180
Max. Speed (rpm)	2000

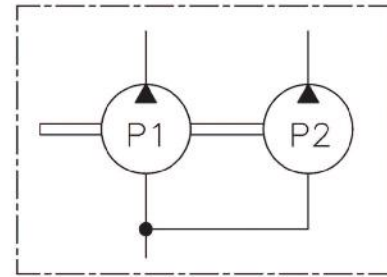


DIMENSIONS

(mm)

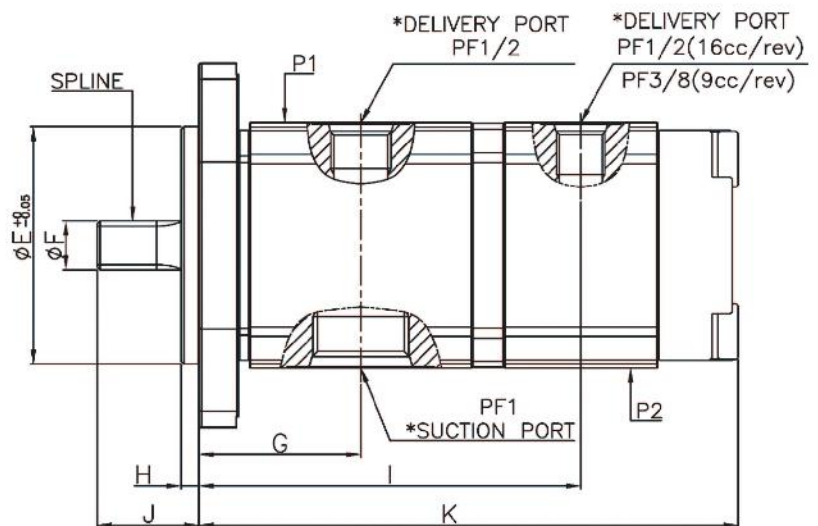
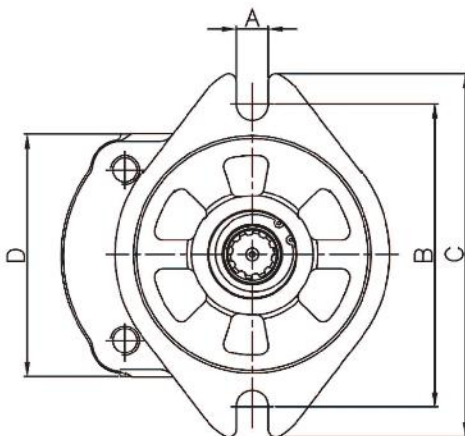
MODEL	A	B	C	D	E	F	G	H	I	J	K	L	SPLINE
HGP10	106	127	11	17	82.55	6.2	45.6	36.4	99.5	138	85.4	114.3	Z10

HGP16.8/10 DOUBLE TYPE GEAR PUMP



SPECIFICATIONS

MODEL	HGP16.8/10	
Discharge Rate (cc/rev)	P1	P2
	16.8	10
Max. pressure (kg/cm ²)	180	
Max. Speed (rpm)	2000	

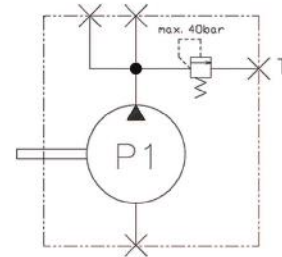


DIMENSIONS

(mm)

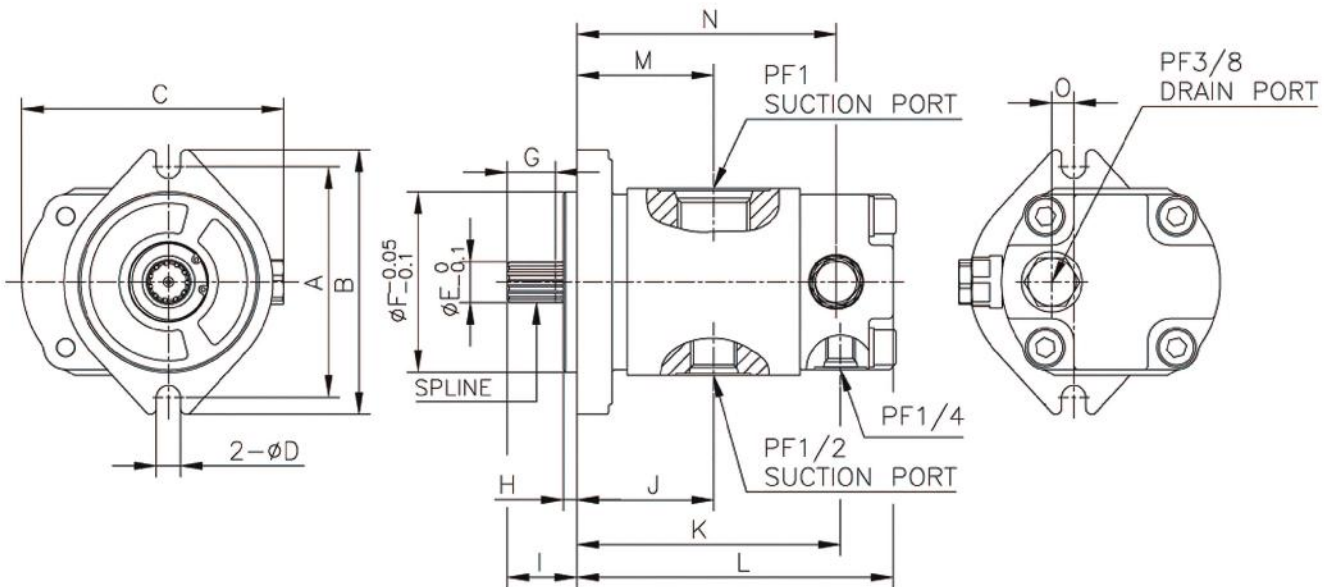
MODEL	A	B	C	D	E	F	G	H	I	J	K	SPLINE
HGP16.8/10	11	106	127.0	85	82.55	17	47.6	6.2	121.6	35.3	213	Z10

HGP16.8 FOR VOLVO / HYUNDAI SINGLE TYPE GEAR PUMP(WITH RELIEF VALVE TYPE)



SPECIFICATIONS

MODEL	HGP16.8
Discharge Rate (cc/rev)	16.8
Max. Pressure (kg/cm²)	40
Max. Speed (rpm)	2000
DIRECTION	CCW(L)

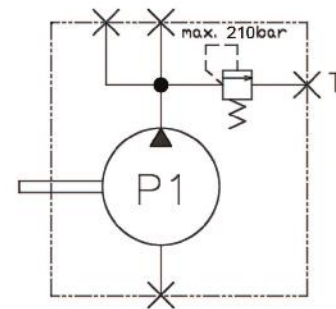
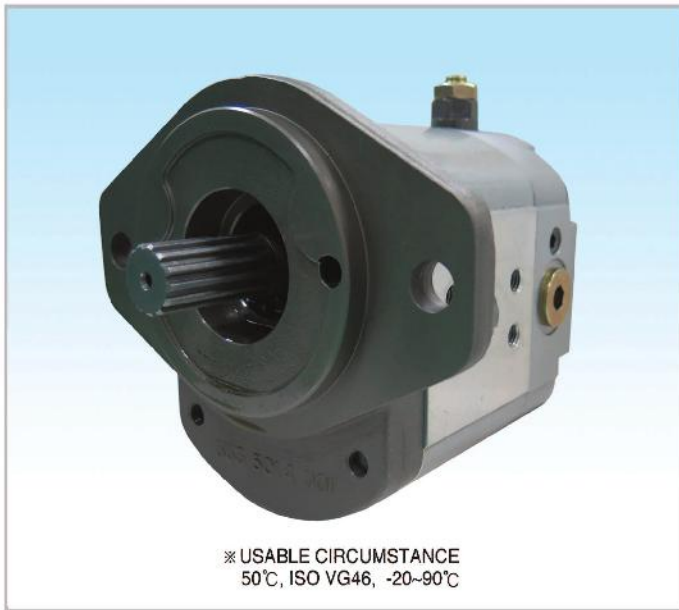


DIMENSIONS

(mm)

MODEL	A	B	C	D	E	F	G	H	I	J	K	L	M	N	O	SPLINE
HGP16.8	105.5	121	119.5	11	18.6	82.55	22	6.2	31.8	62.5	120.5	144.5	62.5	118.5	10	Z11

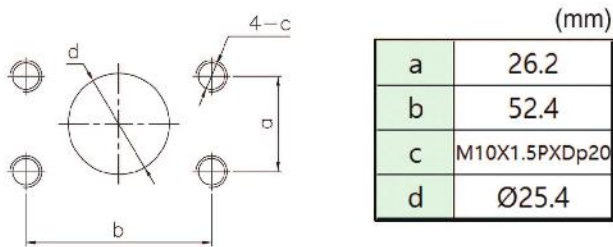
HGP22 SINGLE TYPE GEAR PUMP(WITH RELIEF VALVE TYPE)



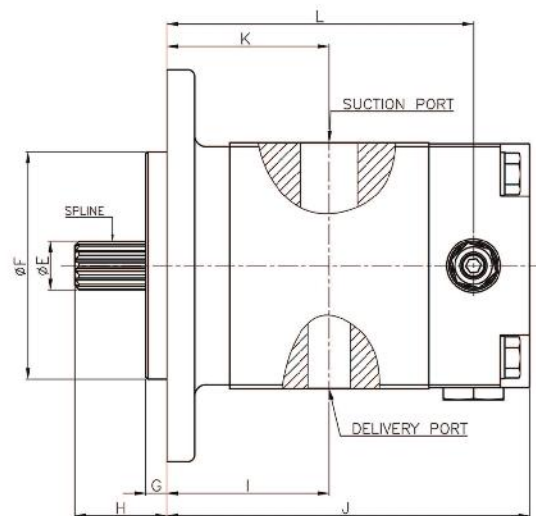
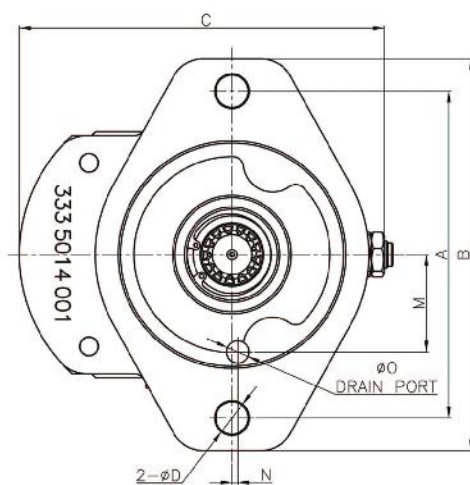
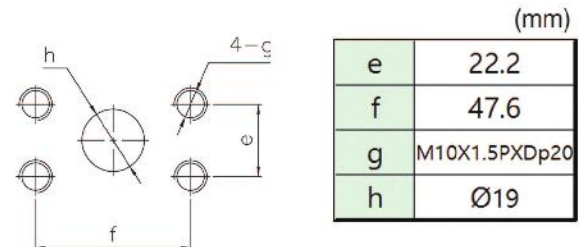
SPECIFICATIONS

MODEL	HGP22(WITH RELIEF VALVE)
Discharge Rate(cc/rev)	22
Max. Pressure(kg/cm ²)	210
Max. Speed(rpm)	2200
DIRECTION	CW

Flange Mounting face for Suction Port



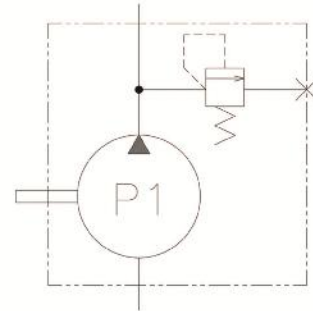
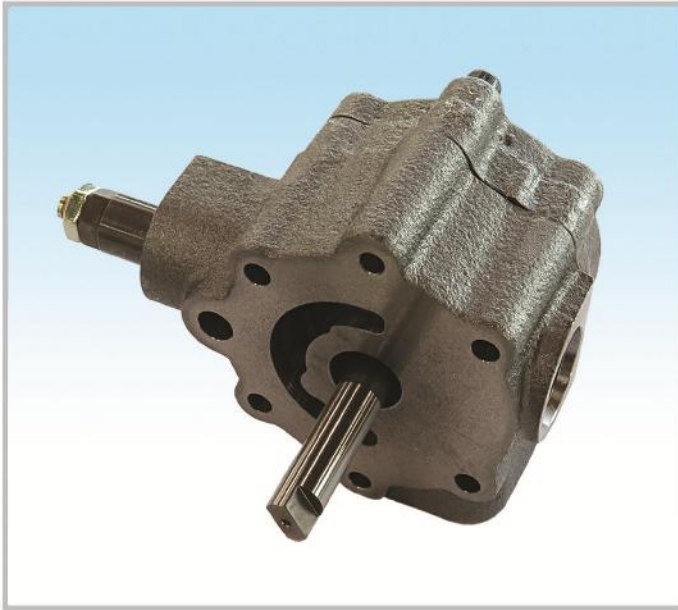
Flange Mounting face for Delivery Port



DIMENSIONS

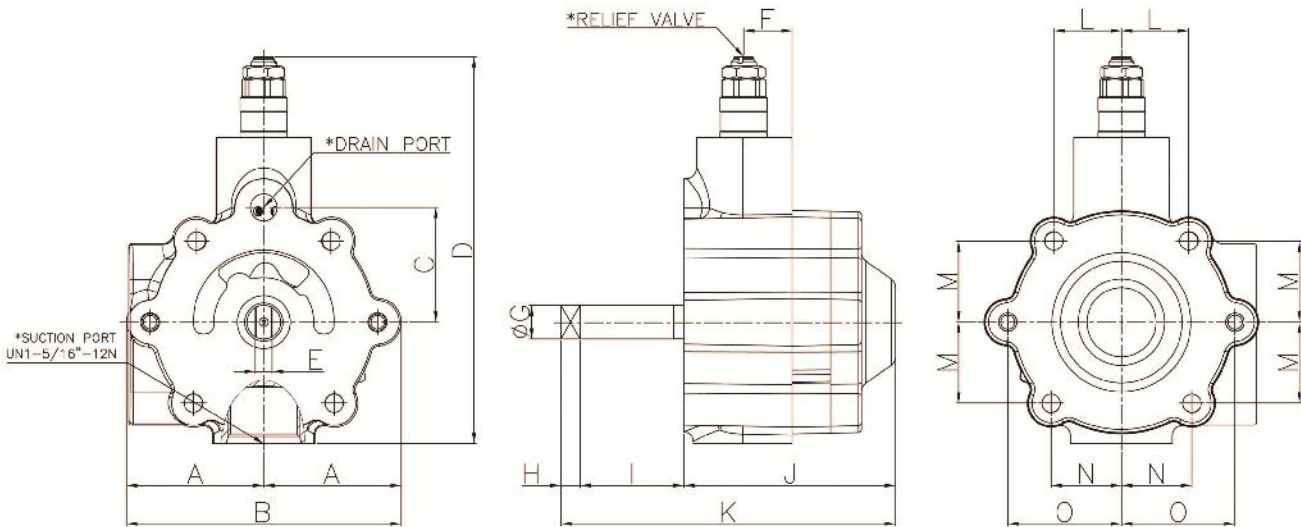
MODEL	A	B	C	D	E	F	G	H	I	J	K	L	M	N	O	SPLINE
HGP22	146	175	163	15.5	21.8	101.6	9.4	41.2	72.5	162	72.5	137	43.5	2.6	10	Z13

HPC90(EATON54) TROCHOID PUMP



SPECIFICATIONS

MODEL	HPC90	
Discharge Rate(cc/rev)	16.7	
Max. Pressure (kg/cm ²)	20	
Max. Speed (rpm)	2000	
DIRECTION	CW(R)	CCW(L)



DIMENSIONS

(mm)

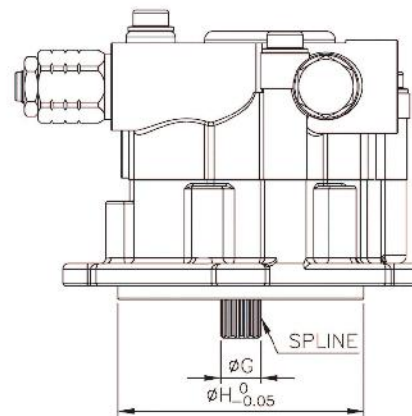
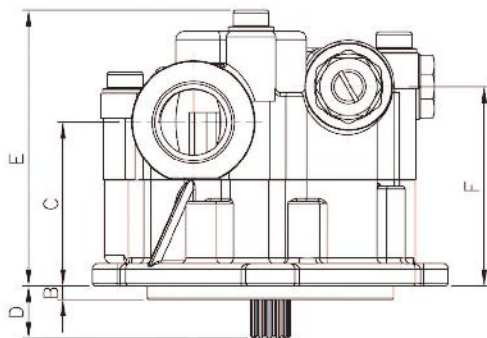
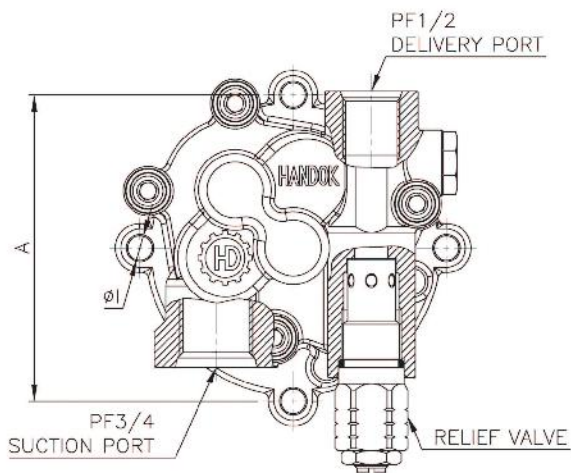
MODEL	A	B	C	D	E	F	G	H	I	J	K	L	M	N	O
HPC90 (TROCHOID PUMP)	65	129	74	182	7.8	23	15.875	9	49	99	157	32	38	33	53

H3V SERIES GEAR PUMPS OF INNER DRAIN TYPE



SPECIFICATIONS

MODEL	H3V63	H3V112	H3V140	H3V180
Discharge Rate (cc/rev)	12		15	
Max. Pressure (kg/cm ²)	40			
Max. Speed (rpm)	3250	2700	2500	2200



DIMENSIONS

(mm)

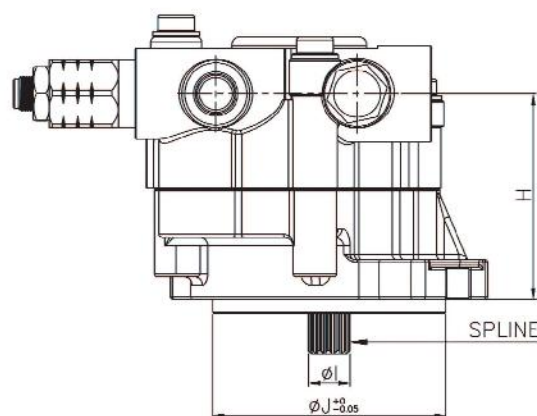
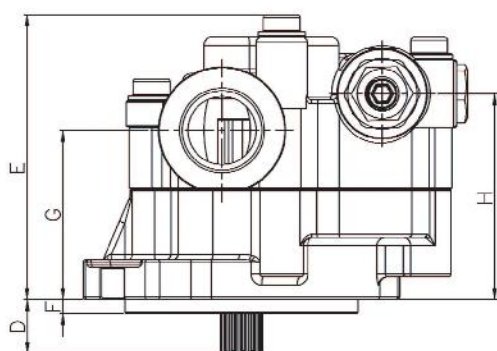
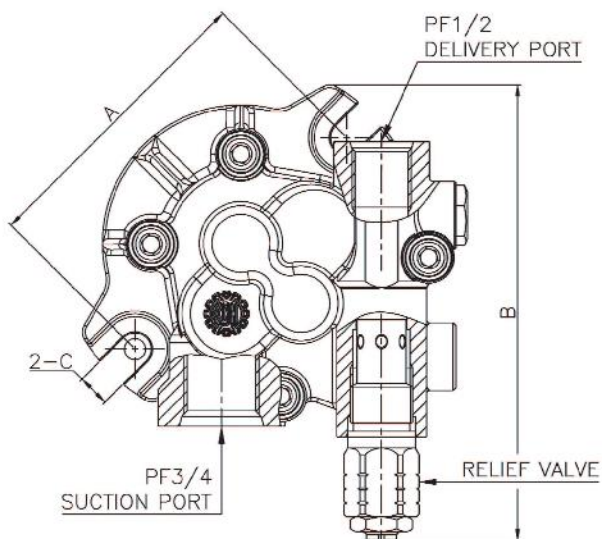
MODEL	A	B	C	D	E	F	G	H	I	SPLINE
H3V63	100	5	59.8	19.2	93	72.8	14.8	80	6.6	Z 12 Z 13
H3V112	112							90		9
H3V140&180	138		62.8	16.2	96	75.8		100	11	Z 12 Z 13

H3V/H5V DTP/DP/DPH SERIES GEAR PUMPS OF OUTER DRAIN TYPE



SPECIFICATIONS

MODEL	H3V63DTP	H5V80DTP	H5V112DP	H5V200DPH
Discharge Rate (cc/rev)	12		15	
Max. Pressure (kg/cm ²)	50			
Max. Speed (rpm)	3250	2700	2500	2200
DIRECTION	CCW(L)			



DIMENSIONS

(mm)

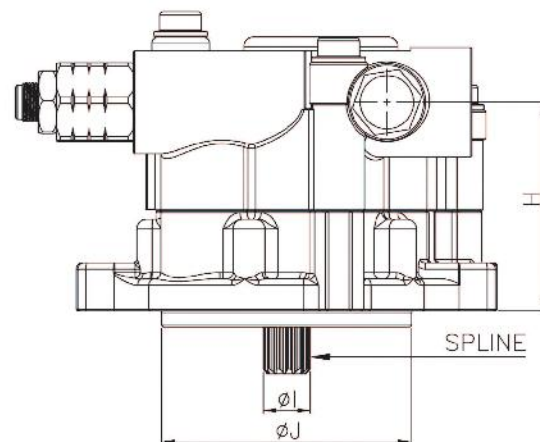
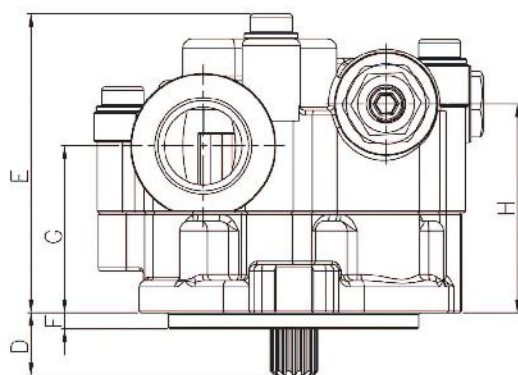
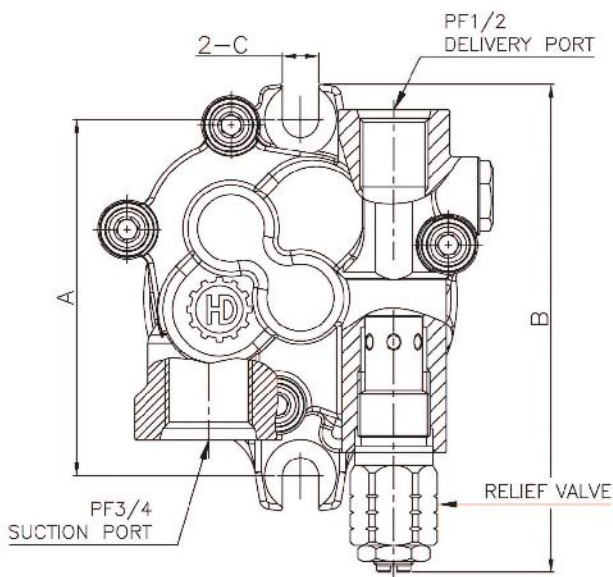
MODEL	A	B	C	D	E	F	G	H	I	J	SPLINE
H3V63DTP	106	161	11.5	19.2	100.8	5	59.8	72.8	14.8	82.55	Z13
H5V80DTP											
H5V112DP											
H5V200DPH											

H3V/H5V DTP SERIES GEAR PUMPS OF INNER DRAIN TYPE



SPECIFICATIONS

MODEL	H3V63DTP	H5V80DTP	H3V112DTP	H5V140DTP
Discharge Rate (cc/rev)	12		15	
Max. Pressure (kg/cm ²)	50			
Max. Speed (rpm)	3250	2700	2500	2200



DIMENSIONS

(mm)

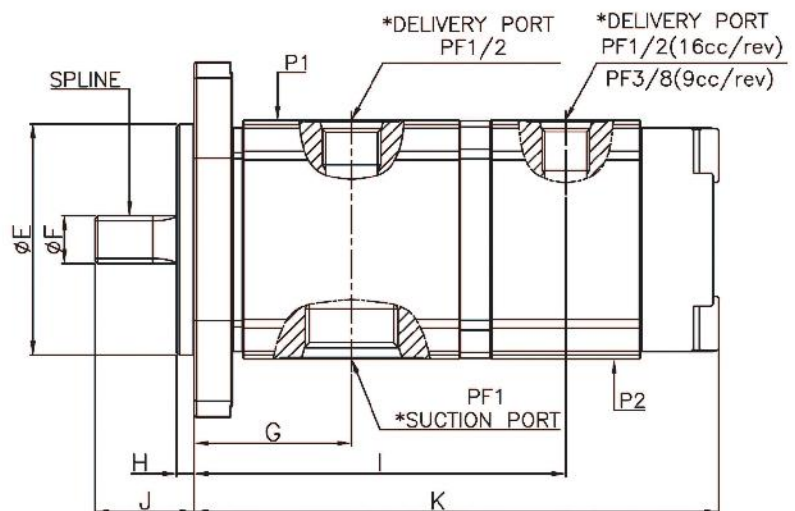
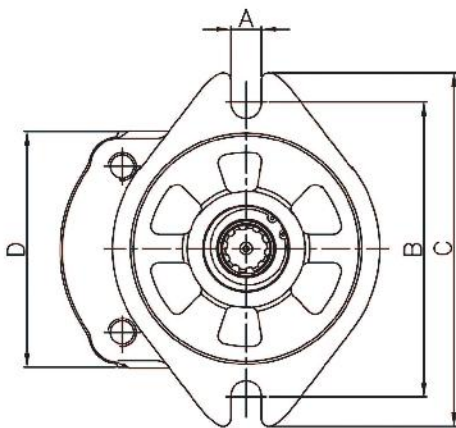
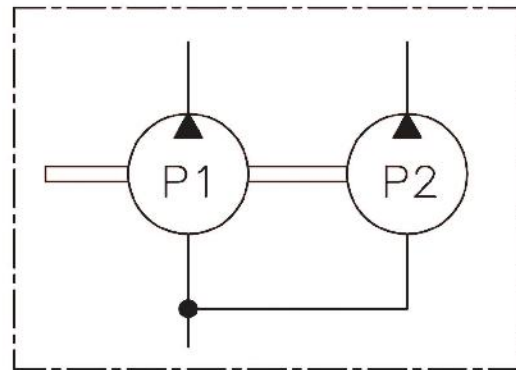
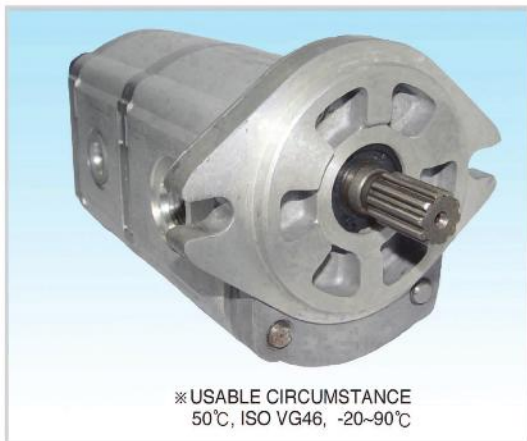
MODEL	A	B	C	D	E	F	G	H	I	J	SPLINE
H3V63DTP	109	149	11	27.2	93	5	51.8	64.8	14.8	77.5	Z13
H5V80DTP											
H3V112DTP											
H5V140DTP											

H3V63DTP/112DTP&H5V80DTP/140DTP DOUBLE TYPE GEAR PUMPS



SPECIFICATIONS

MODEL	H3V63DTP/H5V80DTP	H3V112DTP/H5V140DTP
Discharge Rate (cc/rev)	P1	P2
	23	10/16
Max. Pressure (kg/cm ²)	180	
Max. Speed (rpm)	3200	
DIRECTION	CCW(L)	CW(R)



DIMENSIONS

(mm)

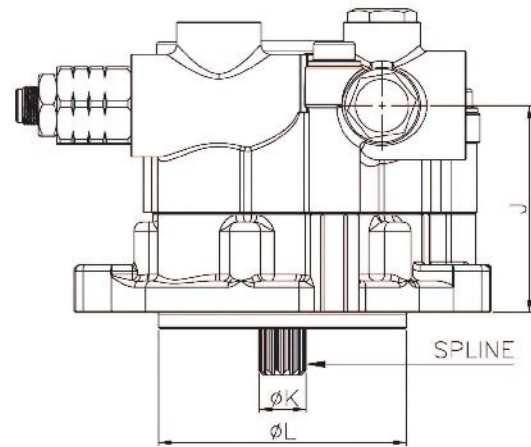
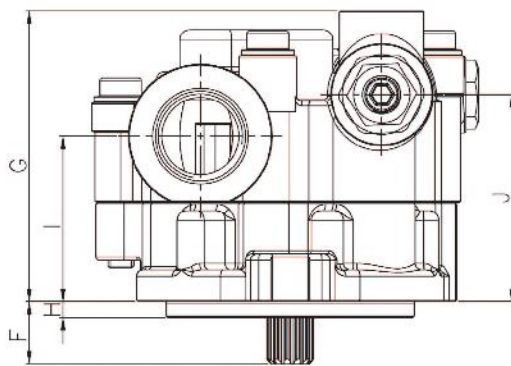
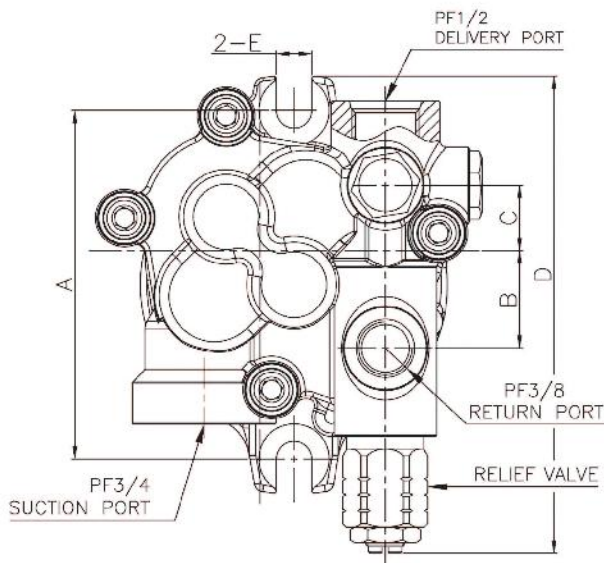
MODEL	A	B	C	D	E	F	G	H	I	J	K	SPLINE
H3V63DTP	11	106	127	85	82.55	17	56.3	6.2	134.1	35.4	190	Z10
H3V112DTP									138.7		199.5	
H5V80DTP												
H5V140DTP												

H3V/H5V DTP SERIES GEAR PUMPS OF OUTER DRAIN TYPE



SPECIFICATIONS

MODEL	H3V63DTP	H5V80DTP	H3V112DTP	H5V140DTP
Discharge Rate (cc/rev)	12		15	
Max. Pressure (kg/cm ²)	50			
Max. Speed (rpm)	3250	2700	2500	2200

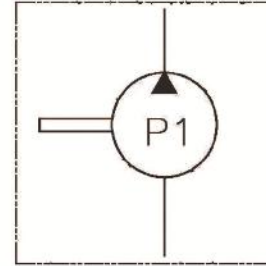


DIMENSIONS

(mm)

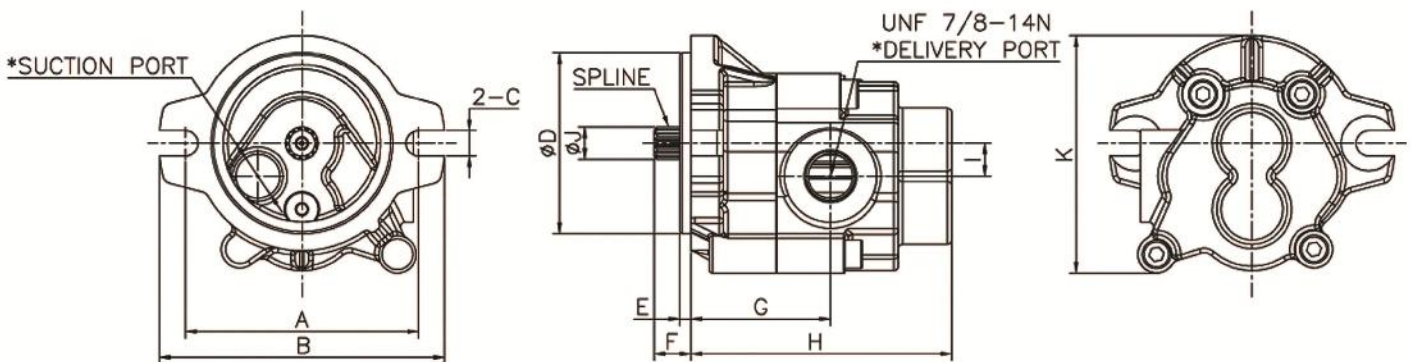
MODEL	A	B	C	D	E	F	G	H	I	J	K	L	SPLINE
H3V63DTP	109	30.5	20.5	149	11	27.2	61	5	51.8	64.8	14.8	77.5	Z13
H5V80DTP													
H3V112DTP													
H5V140DTP													

H5V160DP FOR CATERPILLAR SINGLE TYPE GEAR PUMP



SPECIFICATIONS

MODEL	H5V160DP
Discharge Rate(cc/rev)	25
Max.pressure	40
Max.speed(rpm)	2000

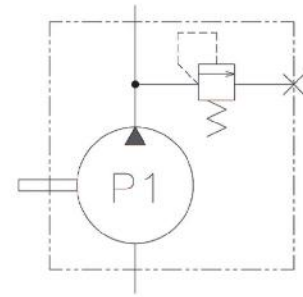
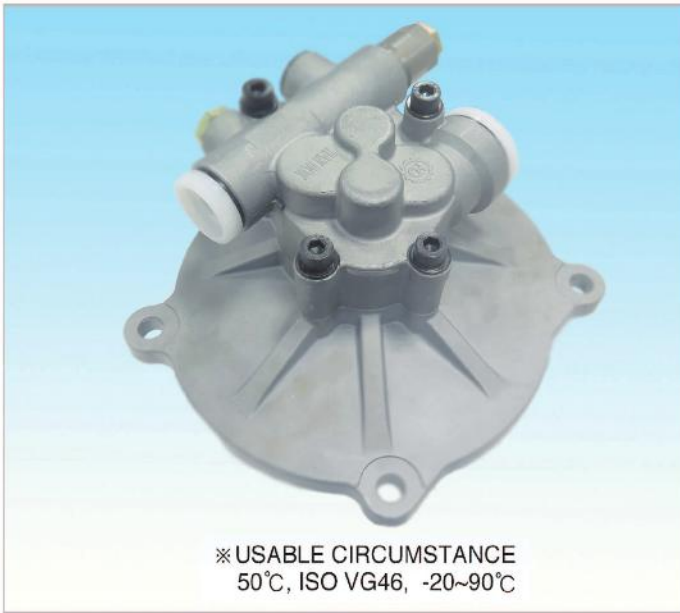


DIMENSIONS

(mm)

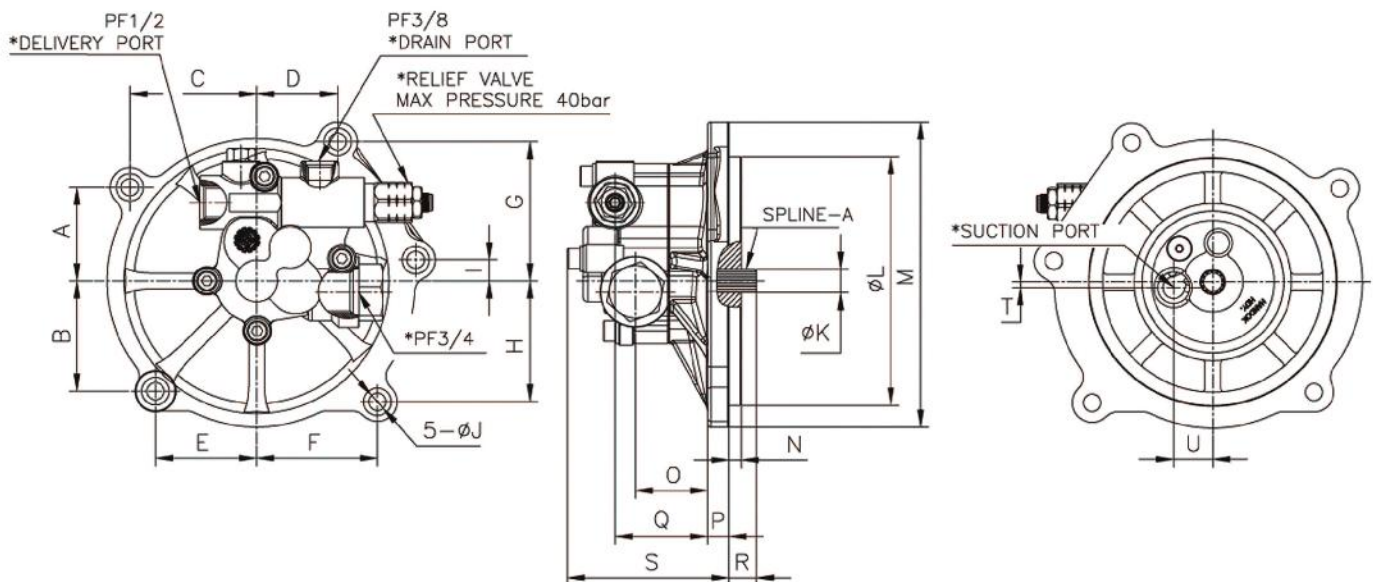
MODEL	A	B	C	D	E	F	G	H	I	J	K	SPLINE
H5V160DP	106	130	12	83	5	17	64	119	15	15	108	Z13

H5V200/212DPH GEAR PUMP OF OUTER DRAIN TYPE



SPECIFICATIONS

MODEL	H5V200/212DPH
Discharge Rate (cc/rev)	15
Max. Pressure (kg/cm ²)	40
Max. Speed (rpm)	2200



DIMENSIONS

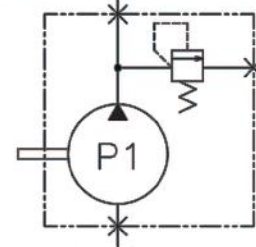
(mm)

MODEL	A	B	C	D	E	F	G	H	I	J	K	L	M	N	O	P	Q	R	S	T	U	SPLINE
H5V200/212 DPH	59.5	70	80.5	51.5	64.2	76.7	88.5	76.7	13.4	11	14.8	158	193.8	8	45.8	13.5	58.8	17.5	102.5	3.6	24.8	Z13

H7V63/100/125/140/180/200DTP GEAR PUMPS OF OUTER DRAIN TYPE

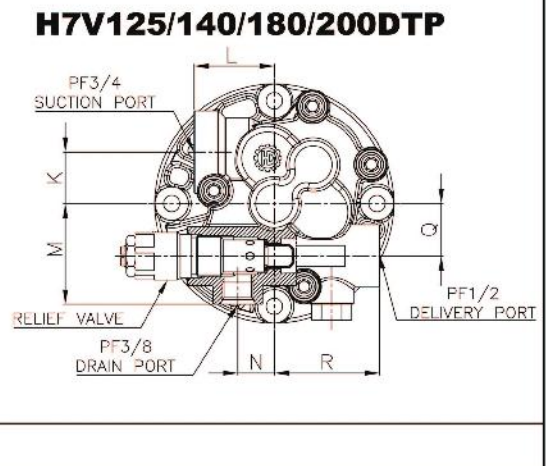
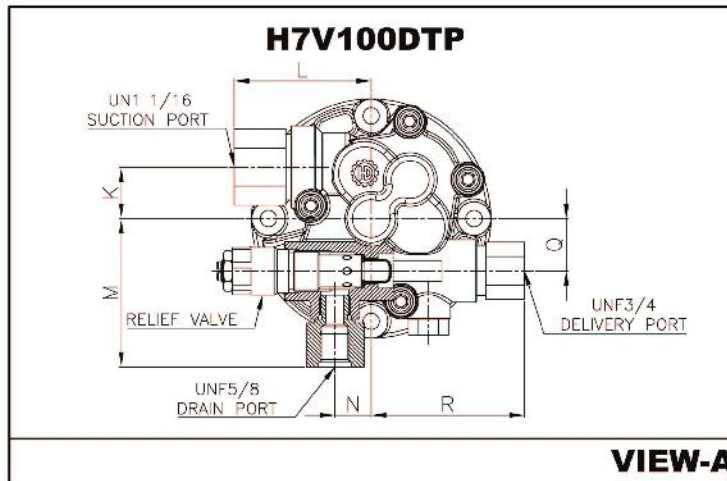
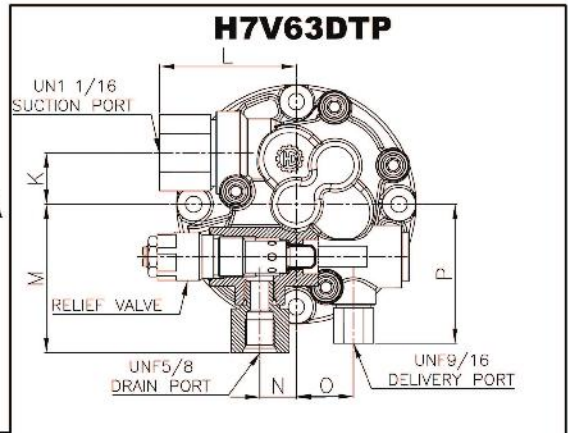
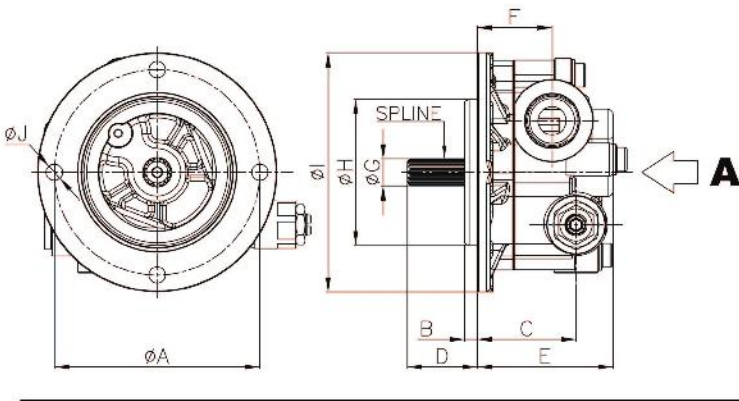


※ USABLE CIRCUMSTANCE
50°C, ISO VG46, -20~90°C



SPECIFICATIONS

MODEL	H7V63/100/125/140/180/200DTP
Discharge Rate(cc/rev)	15
Max. Pressure(kg/cm ²)	50
Max. Speed(rpm)	2700



VIEW-A

DIMENSIONS

(mm)

MODEL	A	B	C	D	E	F	G	H	I	J	K	L	M	N	O	P	Q	R	SPLINE	
H7V63DTP	112	7				41		80	130.5			75	81		31	76	-	-		
H7V100DTP																				
H7V125DTP	124	5	54	31	73.5	45	14.8	100	142.5	9	28	44	55	20	-	-	29	58		
H7V140DTP																				
H7V180DTP	138							110	156											
H7V200DTP																				

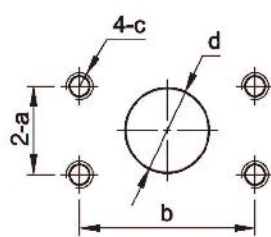
HGP16.8(CCW-L) SINGLE TYPE GEAR PUMP(FOR 4-BOLT FITTINGS)



SPECIFICATIONS

MODEL	HPV125A	HPV125B	KVC925
Discharge Rate (cc/rev)	16.8		
Max. Pressure (kg/cm ²)	180		
Max. Speed (rpm)	3200		
DIRECTION	CCW(L)		

Flange Mounting face for Suction Port

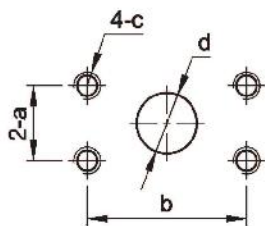


(mm)

a	26.2
b	52.4
c	3/8-16 UNC
d	∅25

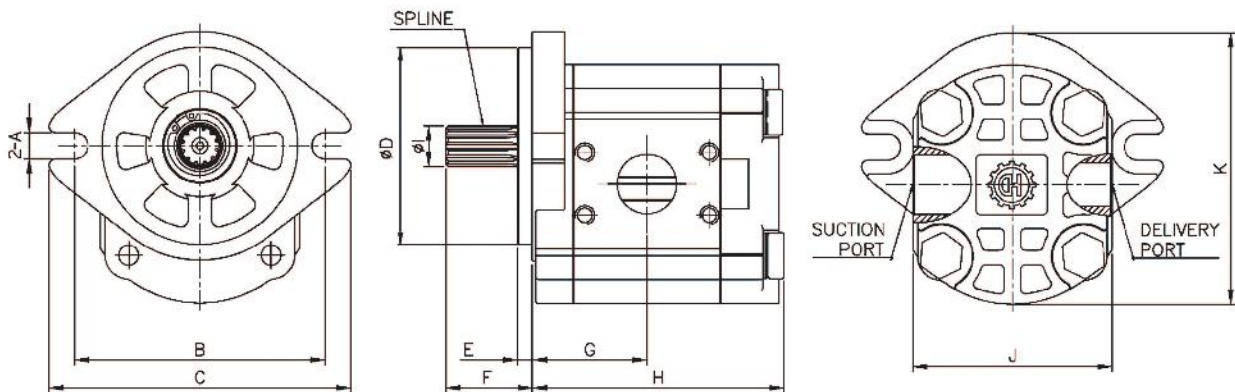


Flange Mounting face for Delivery Port



(mm)

a	22.2
b	47.6
c	3/8-16 UNC
d	∅18



DIMENSIONS

(mm)

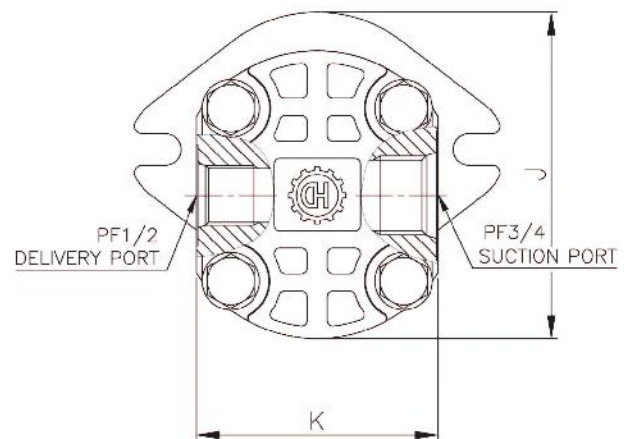
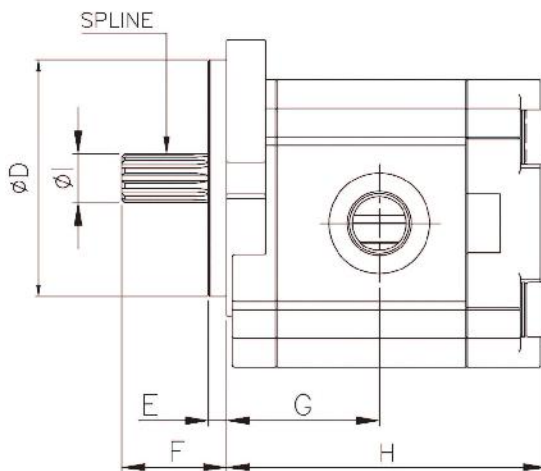
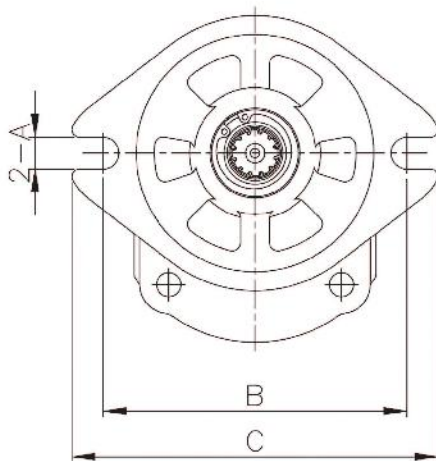
MODEL	A	B	C	D	E	F	G	H	I	J	K	SPLINE
HGP16.8 (CCW-L)	11	105.5	127	82.55	6.2	36.3	50.4	109	17	84	113.5	Z10

HGP16.8(CCW-L, CW-R) SINGLE TYPE GEAR PUMPS(FOR PIPE FITTINGS)



SPECIFICATIONS

MODEL	HPV050	HPV0102	HPV091ES	HPV091EW	HPV116	HPV145	A7V0250
Discharge Rate (cc/rev)	16.8						
Max. Pressure (kg/cm ²)	180						
Max. Speed (rpm)	3200						
DIRECTION	CCW(L)	CCW(L)	CCW(L)	CCW(L)	CW(R)	CW(R)	CW(R)

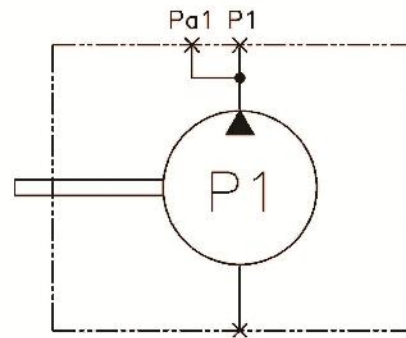


DIMENSIONS

(mm)

MODEL	A	B	C	D	E	F	G	H	I	J	K	SPLINE
HGP16.8 (CCW-L) (CW-R)	11	105.5	127	82.55	6.2	36.3	53	109	17	113.5	84	Z10

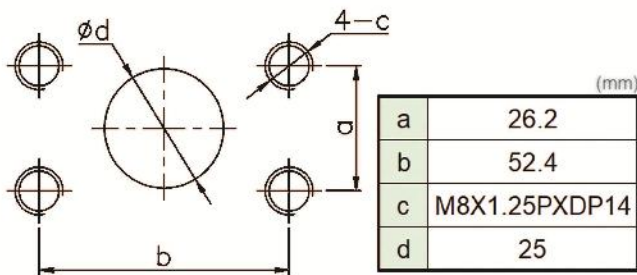
LPD45 FOR KOMATSU SINGLE TYPE GEAR PUMP



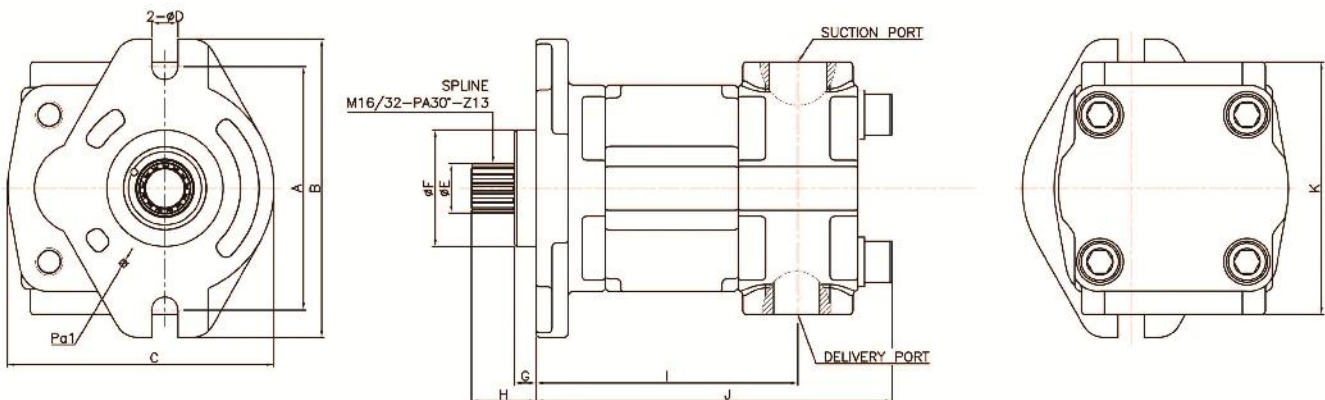
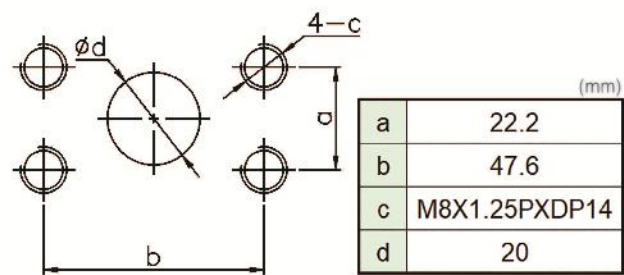
SPECIFICATIONS

MODEL	LPD45 (FOR KOMATSU)
Discharge Rate(cc/rev)	32
Max. Pressure (kg/cm ²)	245
Max. Speed (rpm)	3,000
DIRECTION	CW

Flange Mounting face for Suction Port



Flange Mounting face for Delivery Port

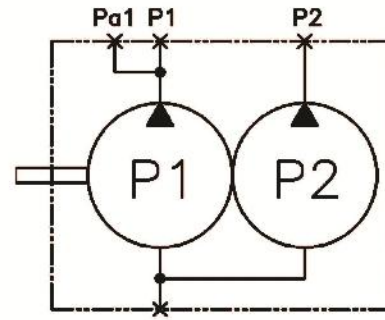


DIMENSIONS

MODEL	A	B	C	D	E	F	G	H	I	J	K
LPD45 (FOR KOMATSU)	106	130	116	11.5	21.8	50.8	9.5	28	114	155	110

(mm)

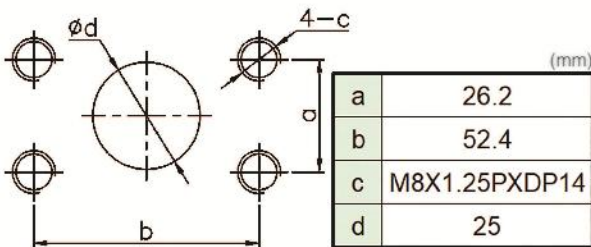
LPD45 FOR KOMATSU DOUBLE TYPE GEAR PUMP



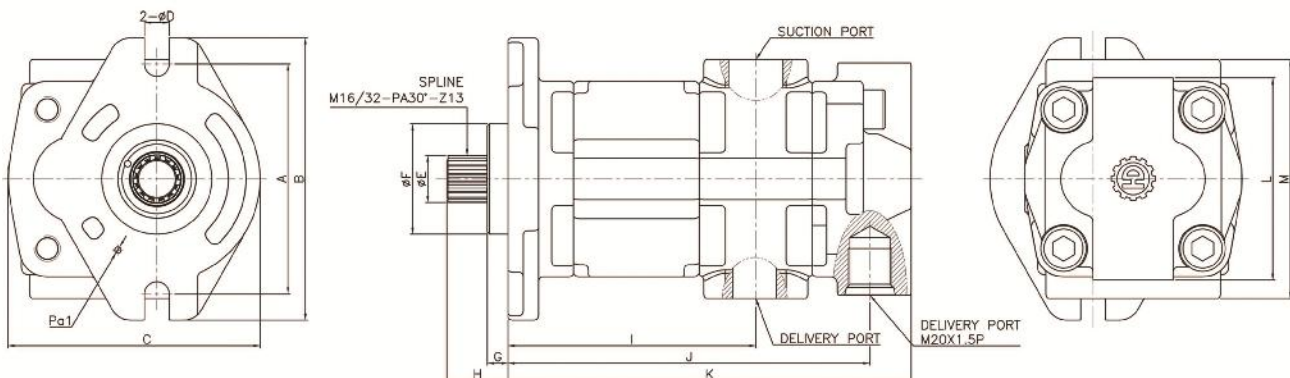
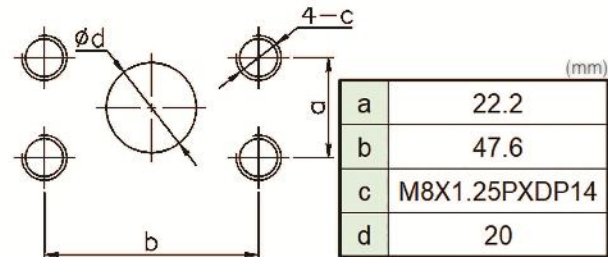
SPECIFICATIONS

MODEL	LPD45(FOR KOMATSU)	
Discharge Rate(cc/rev)	32	7
Max. Pressure (kg/cm ²)	245	
Max. Speed (rpm)	3,000	
DIRECTION	CW	

Flange Mounting face for Suction Port



Flange Mounting face for Delivery Port



DIMENSIONS

(mm)

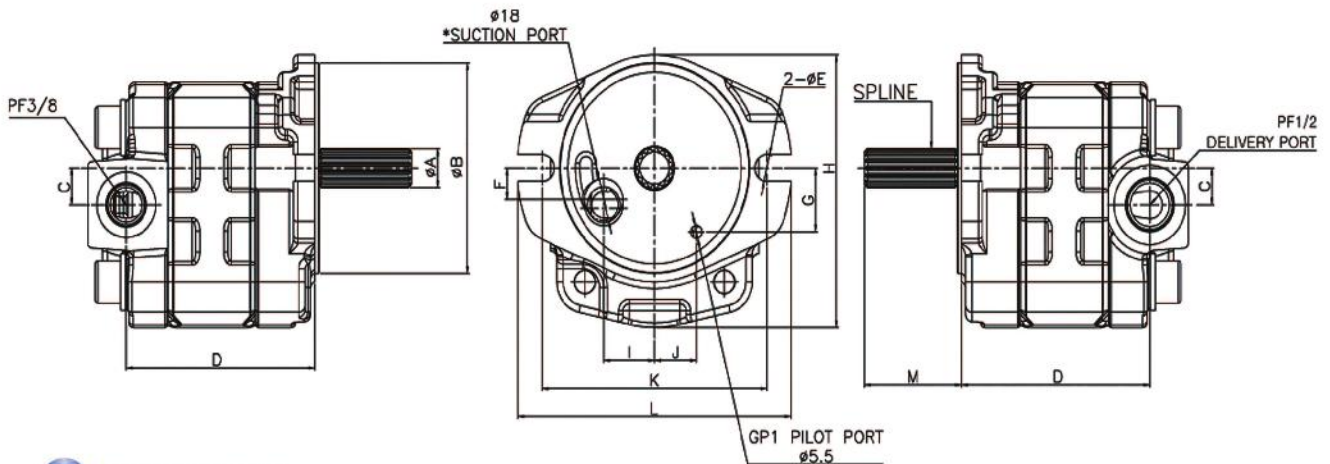
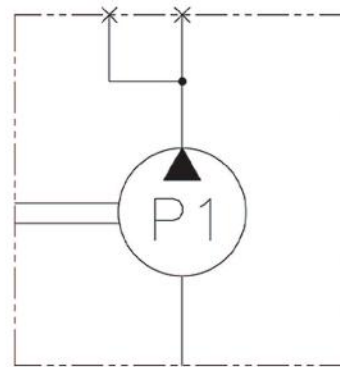
MODEL	A	B	C	D	E	F	G	H	I	J	K	L	M
LPD45 (FOR KOMATSU)	106	130	116	11.5	21.8	50.8	9.5	28.3	114	172	190	93	110

PSVD2 SERIES SINGLE TYPE GEAR PUMPS



SPECIFICATIONS

MODEL	PSVD2-17/21/27		
Discharge Rate (cc/rev)	12	16.8	19.2
Max. Pressure (kg/cm ²)	210		
Max. Speed (rpm)	2400 / 2500 / 2550		



DIMENSIONS

(mm)

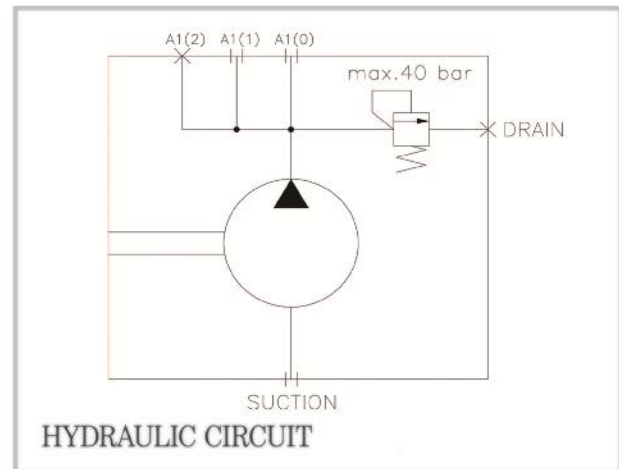
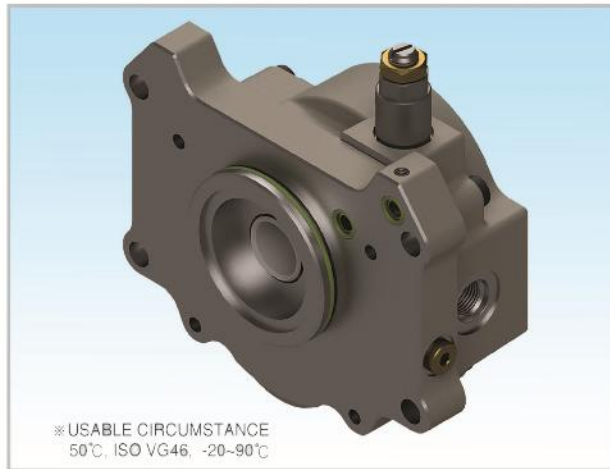
MODEL	A	B	C	D	E	F	G	H	I	J	K	L	M	SPLINE
PSVD2-17	17	90	15.7	76.1	11.5	13.5	27.3	117	24	19.8	106	130	46	Z15
PSVD2-21				85.6										
PSVD2-27				89.2										

PSV2-63 SINGLE TYPE GEAR PUMP



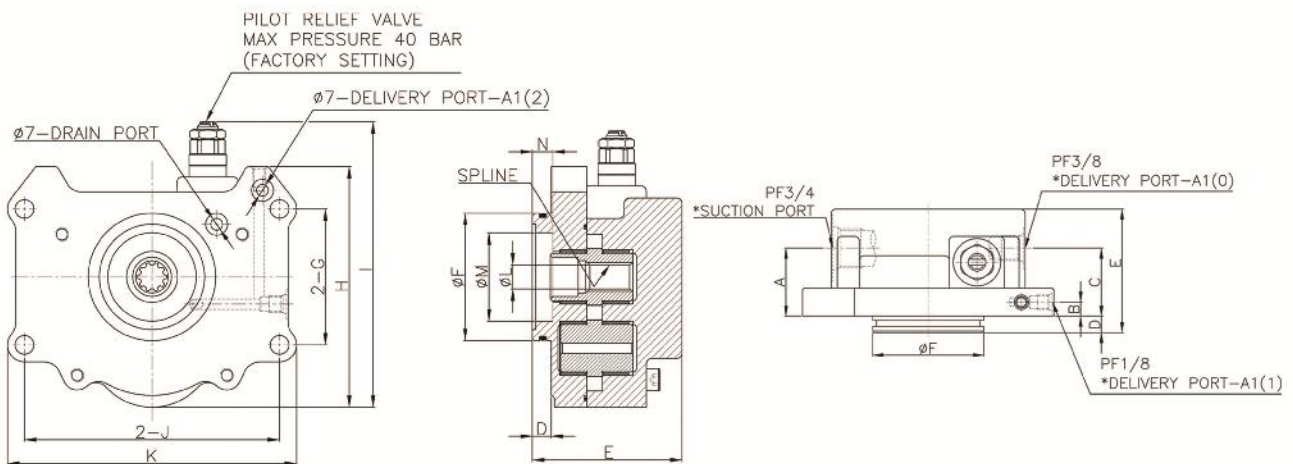
SPECIFICATIONS

MODEL	PSV2-63
Discharge Rate (cc/rev)	10
Max. Pressure (kg/cm²)	40
Max. Speed (rpm)	2000



Dimensions of Shaft End(Spline Type)

MODEL	No. of teeth	Pitch circle dia(mm)	Module	Pressure angle	Standard
PSV2-63	10	15.875	0.5	30°	SAE

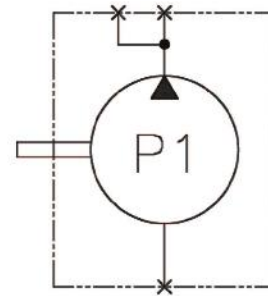
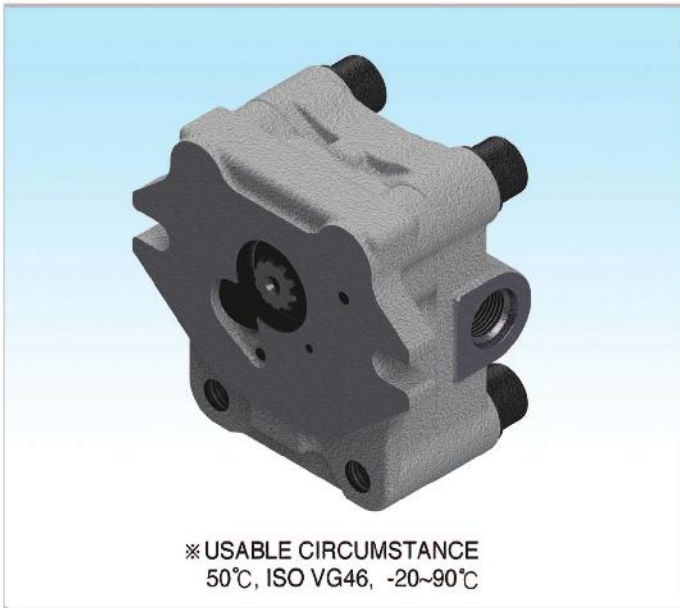


DIMENSIONS

(mm)

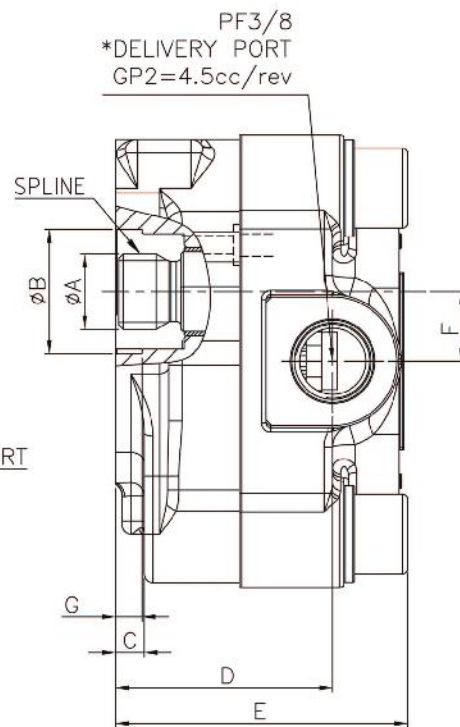
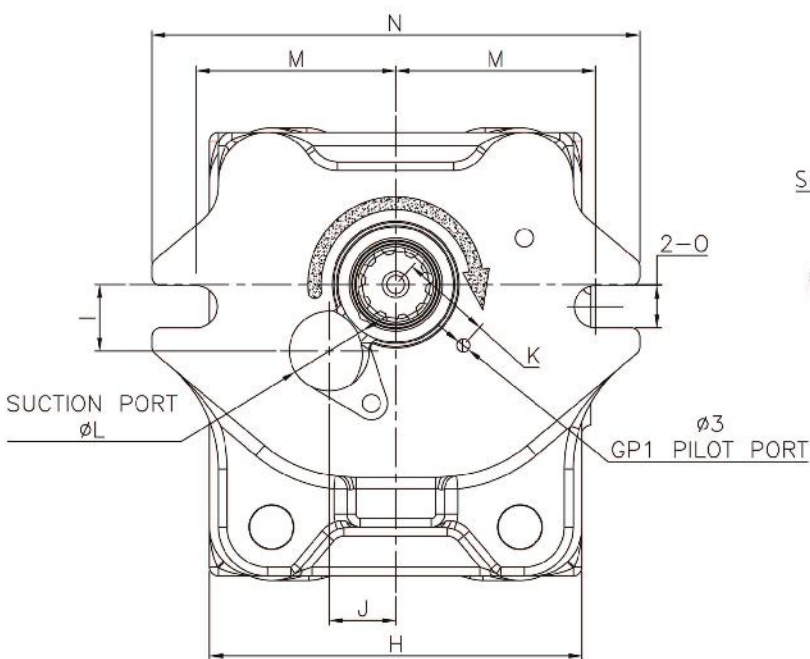
MODEL	A	B	C	D	E	F	G	H	I	J	K	L	M	N	SPLINE
PSV2-63	46	9.5	46	11	83.5	75	80	142	168	150	170	14	52	12	Z10

PVD SERIES SINGLE TYPE GEAR PUMP



SPECIFICATIONS

MODEL	PVD-00B/0B/1B/2B/3B
Discharge rate(cc/rev)	4.5
Max. pressure (kg/cm²)	210
Max.speed(rpm)	3000



DIMENSIONS

(mm)

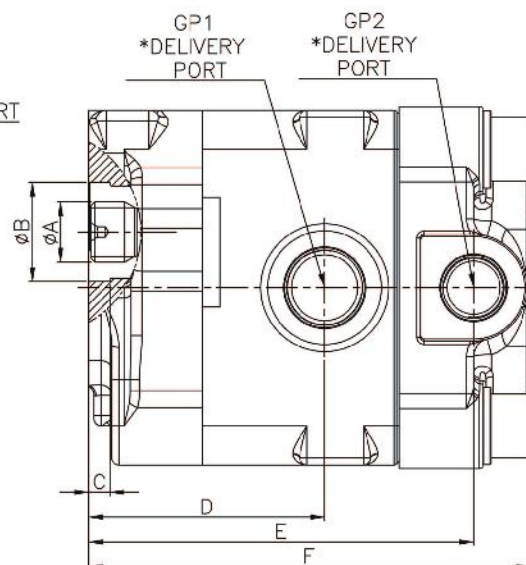
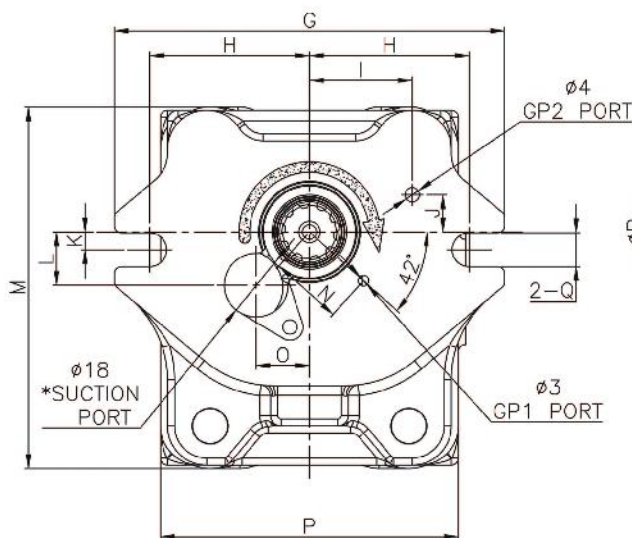
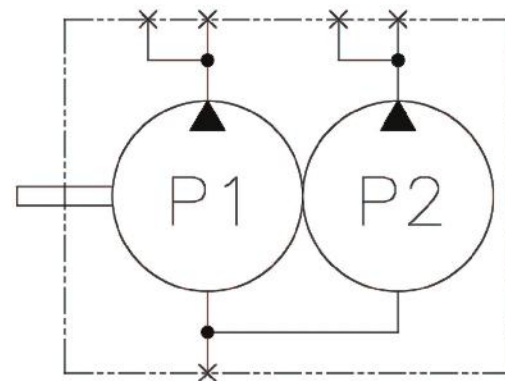
MODEL	A	B	C	D	E	F	G	H	I	J	K	L	M	N	O	SPLINE
PVD-00B/0B/1B/2B/3B	17	28	6.5	49	65.9	15.7	6	84	15	15	20.5	18	45	110	9.5	Z10

PVD SERIES DOUBLE TYPE GEAR PUMP



SPECIFICATIONS

MODEL	PVD-00B/0B/1B/2B/3B					
	6&3cc/rev		10.5&4.5cc/rev		16.8&4.5cc/rev	
Discharge Rate(cc/rev)	P1	P2	P1	P2	P1	P2
	6	3	10.5	4.5	16.8	4.5
Max. Pressure (kg/cm ²)	210	40	210	40	210	40
Max. Speed (rpm)	3000					



DIMENSIONS

(mm)

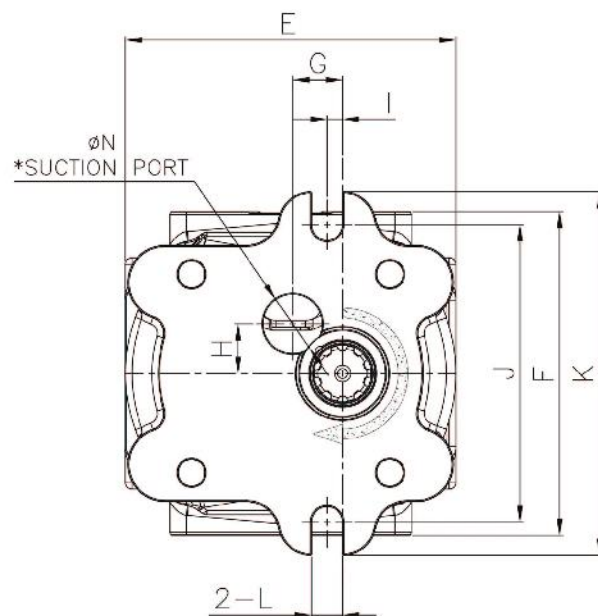
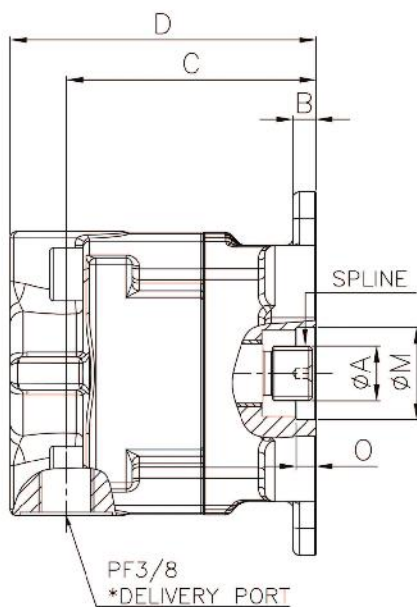
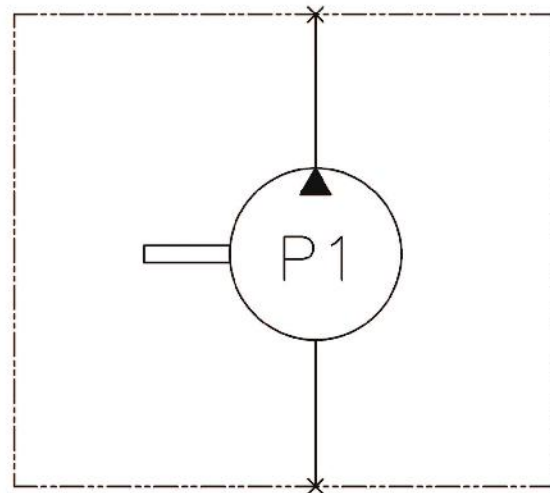
MODEL	A	B	C	D	E	F	G	H	I	J	K	L	M	N	O	P	Q	SPLINE	GP1	GP2
PVD-6&3				45.5	82.5	98.5													PF3/8	
PVD-10.5&4.5	17	28	6	49.5	91.5	108	110	45	29	10.5	5	15	102	20.5	15	84	9.5	Z10	PF3/8	
PVD-16.8&4.5				66.5	108.5	125													PF1/2	

H3SP SERIES SINGLE TYPE GEAR PUMP



SPECIFICATIONS

MODEL	H3SP30/36C
Discharge Rate(cc/rev)	10
Max. Pressure (kg/cm²)	35
Max. Speed (rpm)	2300



DIMENSIONS

(mm)

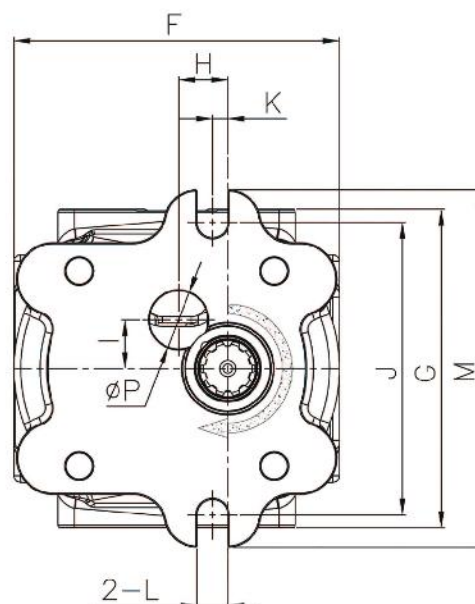
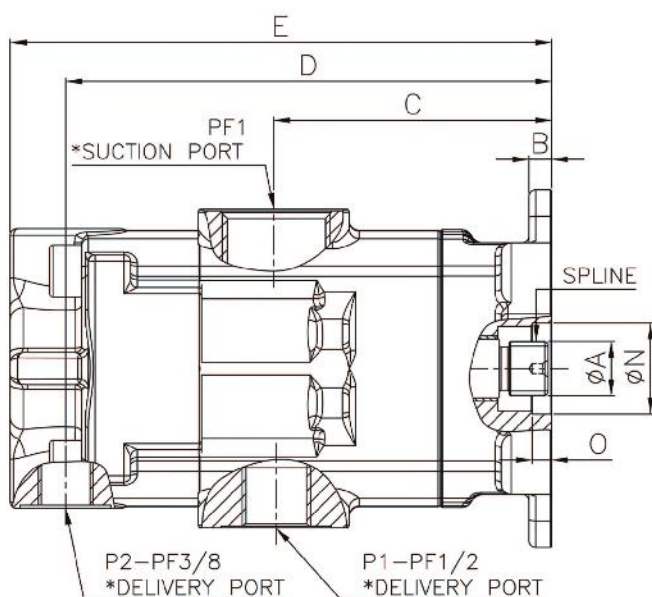
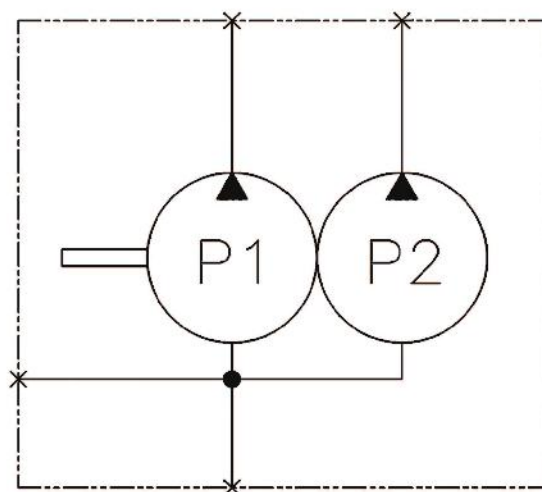
MODEL	A	B	C	D	E	F	G	H	I	J	K	L	M	N	O	SPLINE
H3SP30/36C	17	7	75.5	92.5	100	98	15	15	5	90	110	9.5	28	18	6	Z10

H3SP SERIES DOUBLE TYPE GEAR PUMP



SPECIFICATIONS

MODEL	H3SP30/36C	
Discharge Rate(cc/rev)	P1	P2
	16.8	10
Max. Pressure (kg/cm ²)	200	35
Max. Speed (rpm)	2300	

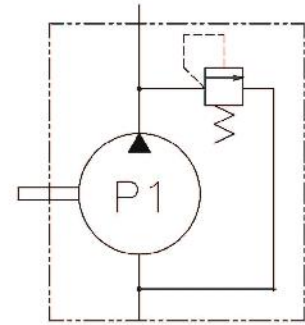
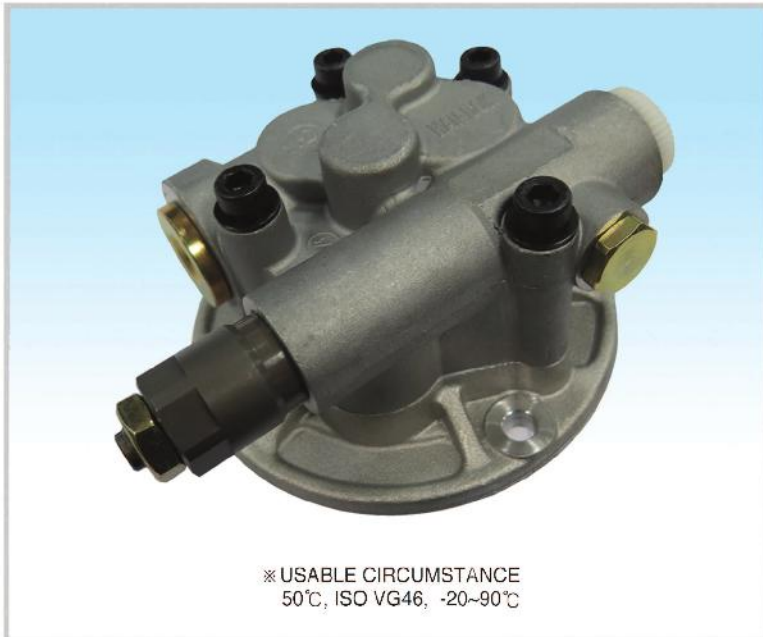


DIMENSIONS

(mm)

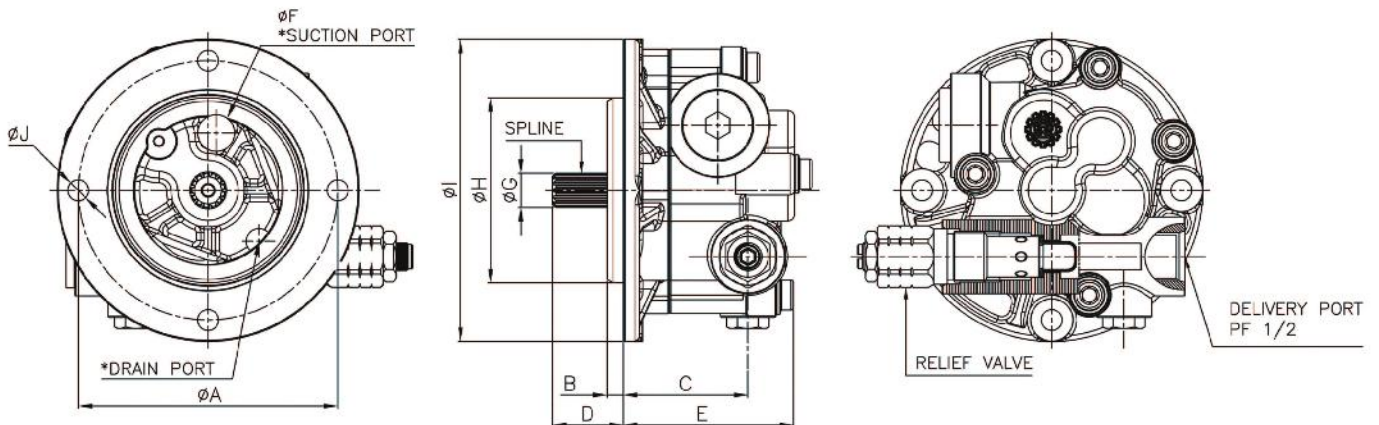
MODEL	A	B	C	D	E	F	G	H	I	J	K	L	M	N	O	P	SPLINE
H3SP30/36C	17	7	85.5	149.5	166	100	98	15	15	90	5	9.5	110	28	6	18	Z10

H7SP36 GEAR PUMP OF INNER DRAIN TYPE



SPECIFICATIONS

MODEL	H7SP36
Discharge Rate(cc/rev)	15
Max. Pressure (kg/cm ²)	50
Max. Speed (rpm)	2700



DIMENSIONS

(mm)

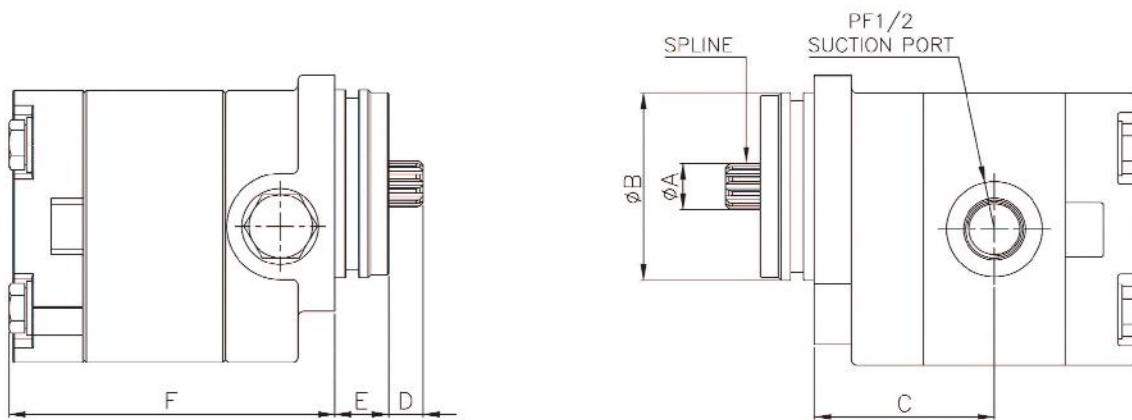
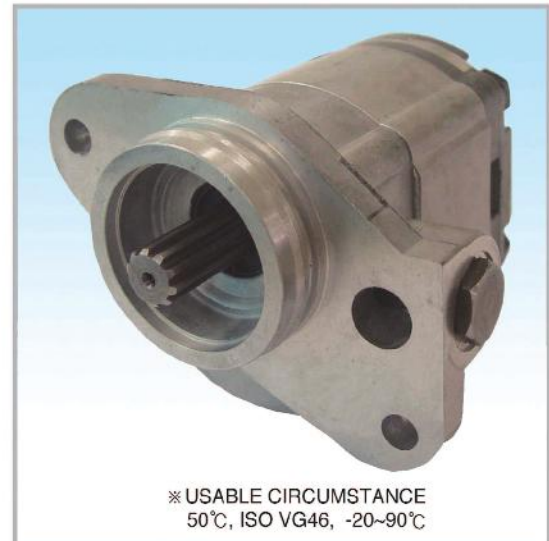
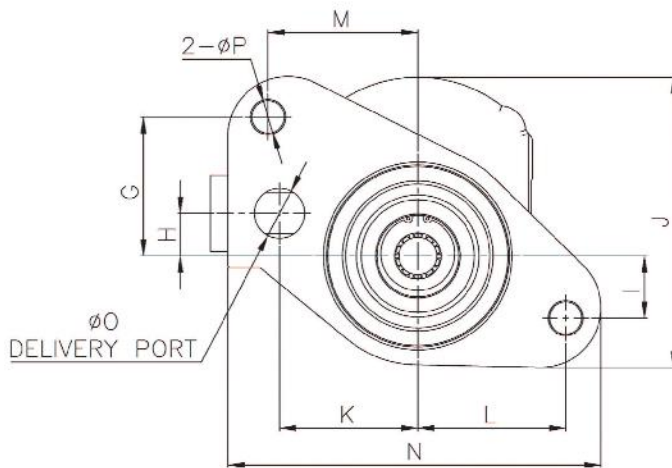
MODEL	A	B	C	D	E	F	G	H	I	J	SPLINE
H7SP36	112	7	54	30.6	73.5	16	14.8	80	103.5	9	Z13

GEAR PUMP FOR HITACHI



SPECIFICATIONS

MODEL	HPVO91DW	HPVO91DS
Discharge Rate (cc/rev)	16.8	
Max. Pressure (kg/cm ²)	180	
Max. Speed (rpm)	3200	
DIRECTION	CCW(L)	



DIMENSIONS

(mm)

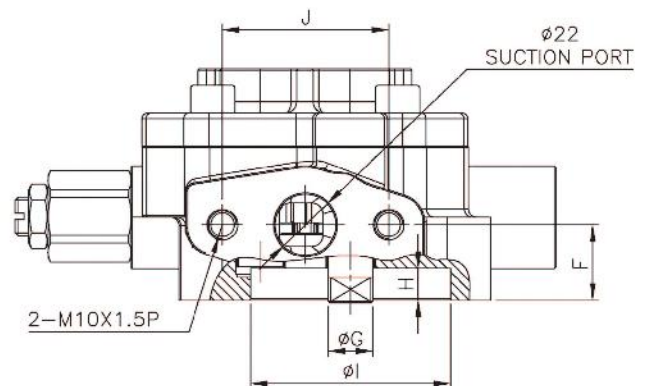
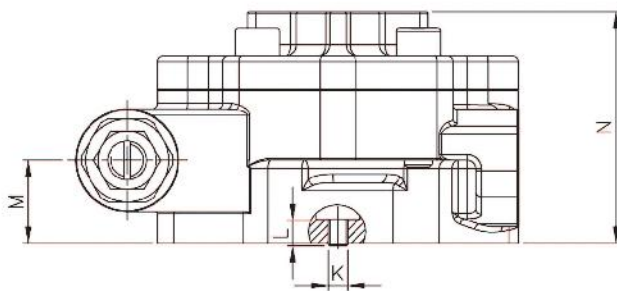
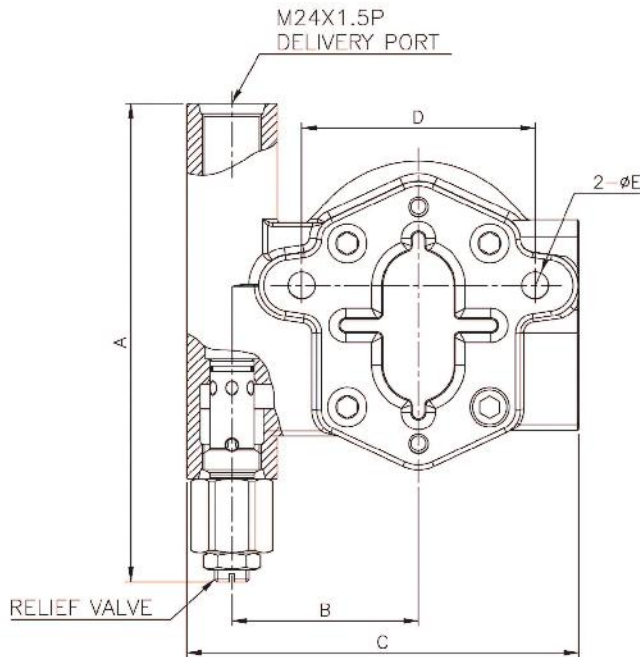
MODEL	A	B	C	D	E	F	G	H	I	J	K	L	M	N	O	P	SPLINE
HPVO91DW	17	69	66	126	198	119	51	15.7	22.8	107	50.6	54	54.8	136.5	18.4	11	Z10
HPVO91DS																	

GEAR PUMPS FOR KOMATSU



SPECIFICATIONS

MODEL	HPV55 (PC100/120-3/5)	HPV35&95 (PC60-3/5, PC200&220-6/7)	HPV132 (PC300-6)
Discharge Rate (cc/rev)	17.6	13.2	17.6
Max. Pressure (kg/cm ²)	50		
Max. Speed (rpm)	3200		



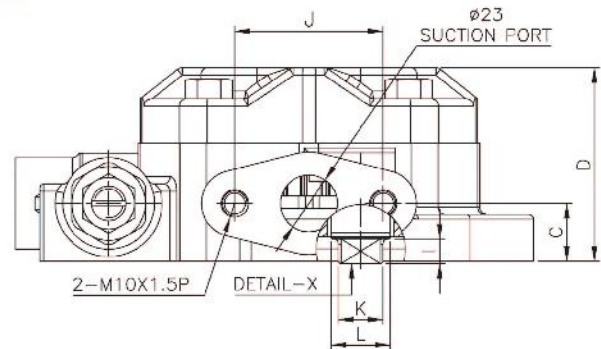
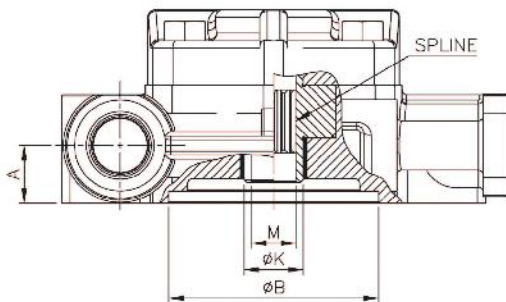
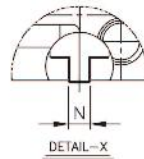
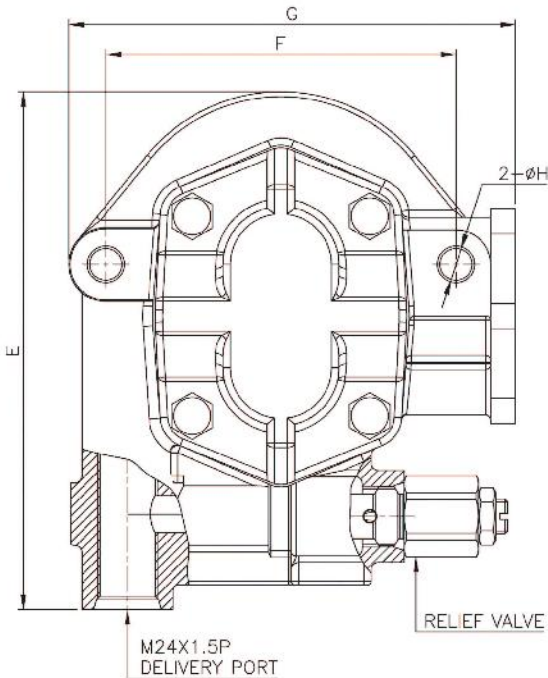
DIMENSIONS

(mm)

MODEL	A	B	C	D	E	F	G	H	I	J	K	L	M	N
HPV55 (PC100/120-3/5)	195	76	159.7	95.2	11	27.2	15	11.5	72	60	7	9.2	29.9	83.5
HPV55 (PC60-3/5)				105		26.3		8.2	84				28.9	75.4
HPV95 (PC200&220-6/7)				27.2		29.9		83.5						
HPV132 (PC300-6)				29.9		83.5								

SPECIFICATIONS

MODEL	HPV71(PC150-3/5)	HPV90(PC200-3/5)
Discharge Rate (cc/rev)	23.5	
Max. Pressure (kg/cm ²)	50	
Max. Speed (rpm)	3200	



DIMENSIONS

(mm)

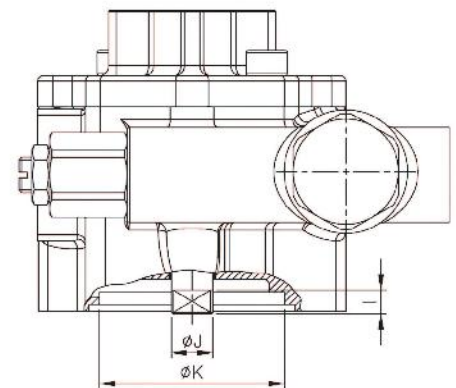
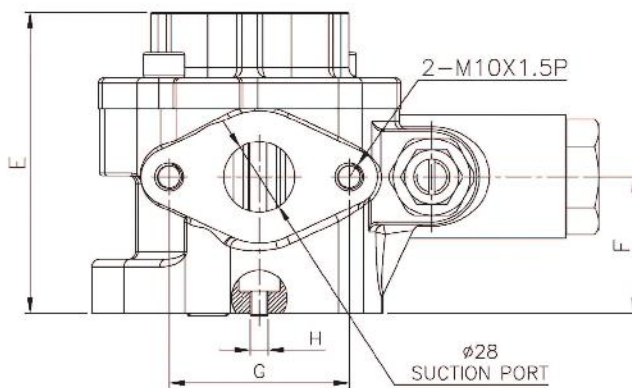
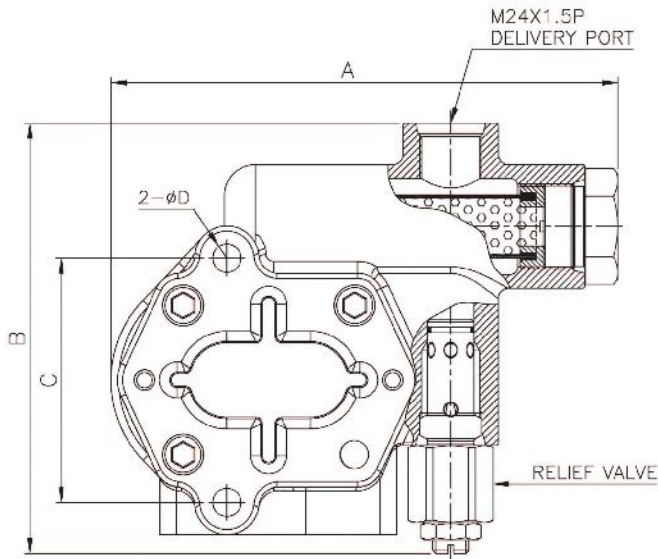
MODEL	A	B	C	D	E	F	G	H	I	J	K	L	M	N	SPLINE
HPV71 ,HPV90 (PC150-3, PC200-3)	26.5	85	26.5	78.5	210	142	181	13	-	60	24	-	18.2	-	-
HPV71 ,HPV90 (PC150-5, PC200-5)									10		18.2	24	-	9	Z10

GEAR PUMP FOR KOMATSU



SPECIFICATIONS

MODEL	HPV160(PC300-3/5, PC400-3/5)
Discharge Rate (cc/rev)	28.6
Max. Pressure (kg/cm²)	50
Max. Speed (rpm)	3200



DIMENSIONS

MODEL	A	B	C	D	E	F	G	H	I	J	K
HPV160 (PC300-3/5, PC400-3/5)	197	167	95	11	117	53	70	7	9.2	16	72

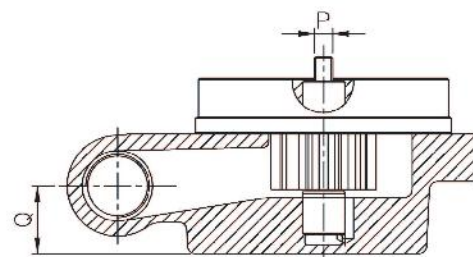
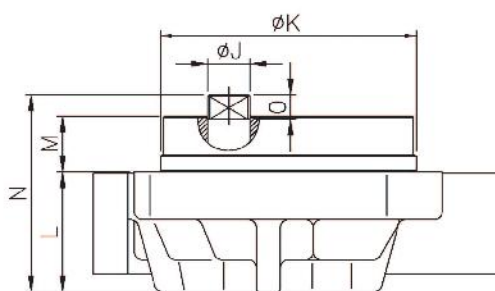
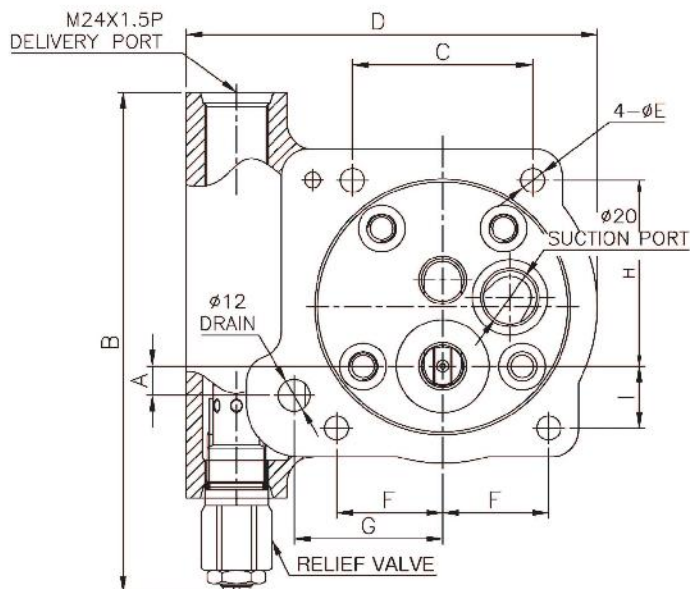
(mm)

GEAR PUMP FOR KOMATSU



SPECIFICATIONS

MODEL	HPV75(PC60-6)
Discharge Rate (cc/rev)	16.8
Max. Pressure (kg/cm²)	40
Max. Speed (rpm)	3200



DIMENSIONS

(mm)

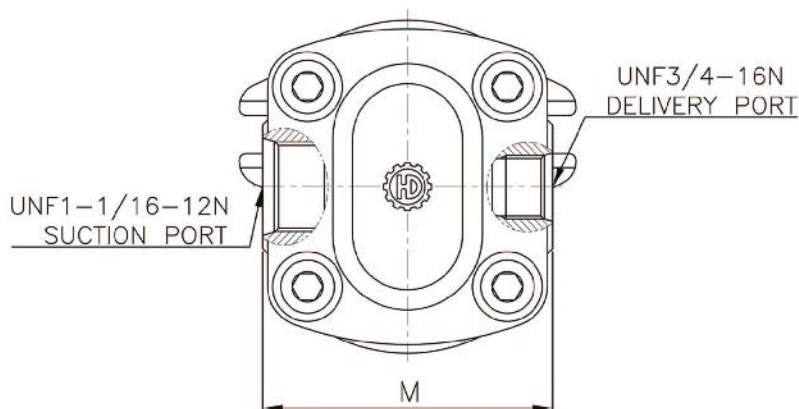
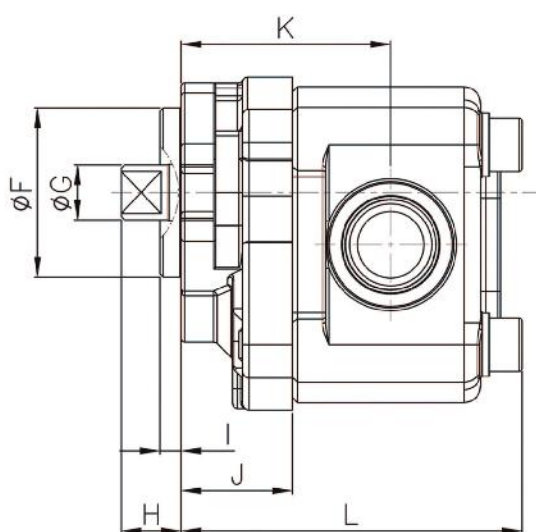
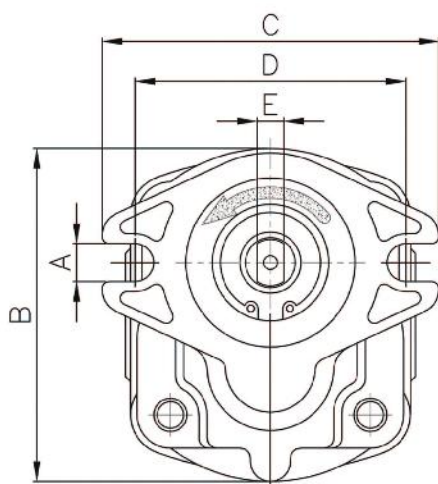
MODEL	A	B	C	D	E	F	G	H	I	J	K	L	M	N	O	P	Q
HPV75 (PC60-6)	11	189	68	155	9	40	56	70.1	23.4	16	96.4	45.2	21	74.2	9.2	7	25.6

GEAR PUMP FOR CATERPILLAR



SPECIFICATIONS

MODEL	SBS80(CCW)
Discharge Rate(cc/rev)	11
Max. Pressure (kg/cm²)	40
Max. Speed (rpm)	3200



DIMENSIONS

(mm)

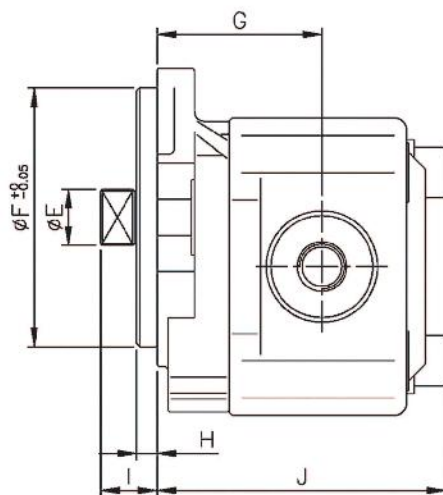
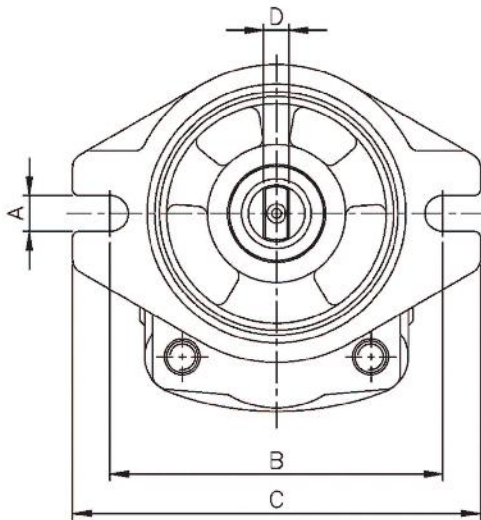
MODEL	A	B	C	D	E	F	G	H	I	J	K	L	M
SBS80 (CCW)	11.4	100	101	81.4	8	50.8	16.5	18	6.4	33.4	63	103	87

SBS120&140 FOR CATERPILLAR SINGLE TYPE GEAR PUMP

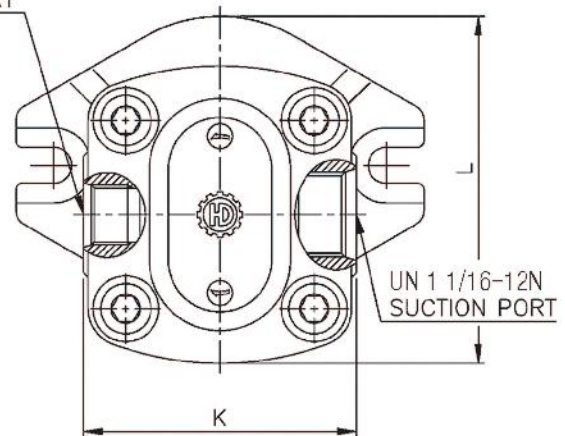


SPECIFICATIONS

MODEL	SBS120/140
Discharge Rate (cc/rev)	16
Max. Pressure (kg/cm²)	180
Max. Speed(rpm)	3200



UNF 3/4-16N
DELIVERY PORT



DIMENSIONS

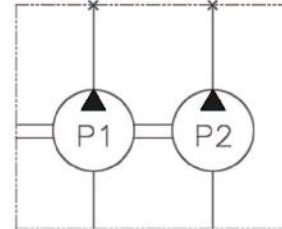
(mm)

MODEL	A	B	C	D	E	F	G	H	I	J	K	L
SBS120/140 (SINGLE)	11.5	106	130	8	17.9	82.5	52.5	6.5	18	92	87	111

SBS120&140 FOR CATERPILLAR DOUBLE TYPE GEAR PUMP

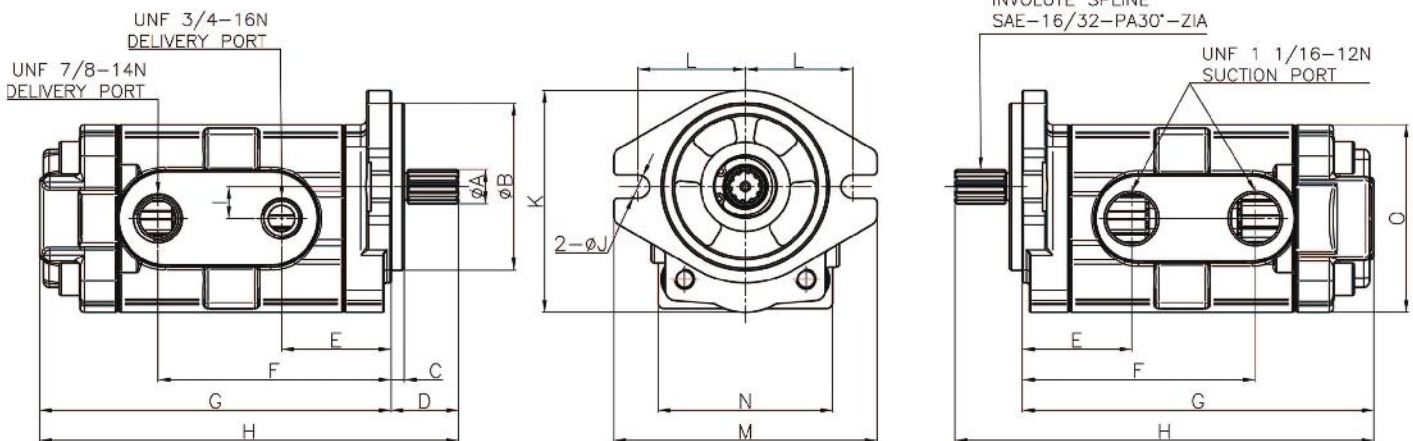


※ USABLE CIRCUMSTANCE
50°C, ISO VG46, -20~90°C



SPECIFICATIONS

MODEL	SBS120&140	
Discharge Rate (cc/rev)	P1	P2
	20	13
Max. pressure (kg/cm ²)	120	150
Max. Speed (rpm)	1800	



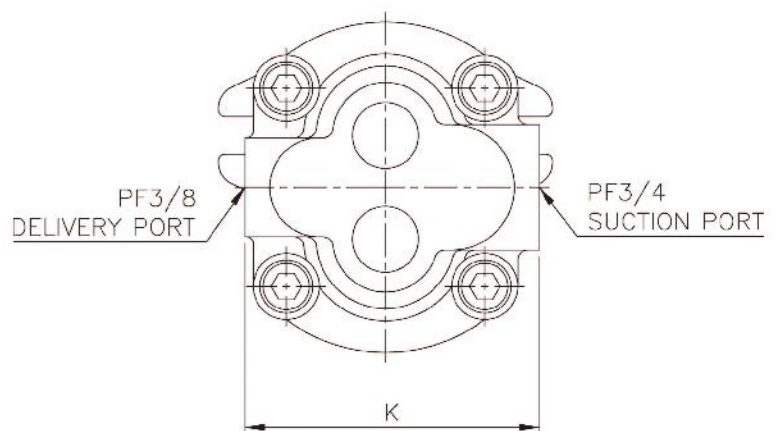
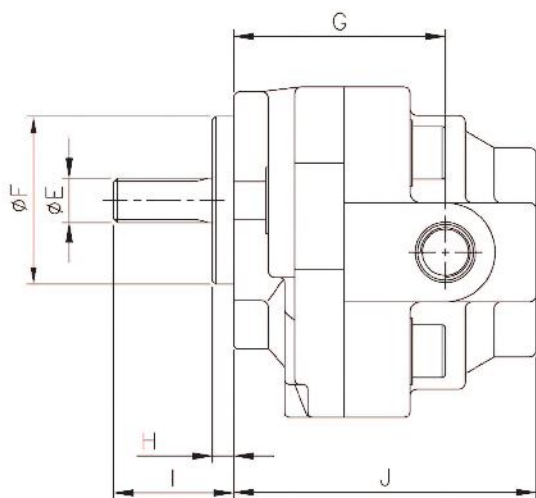
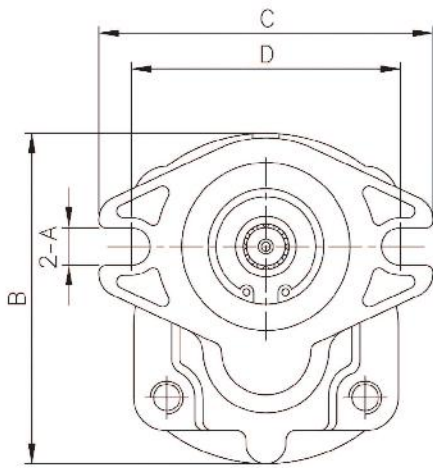
DIMENSIONS

(mm)

MODEL	A	B	C	D	E	F	G	H	I	J	K	L	M	N	O	SPLINE
SBS120/140 (DOUBLE)	17	82.5	6.5	33.3	54	115	173.5	206.8	15.7	11.5	109.5	53	130	86	92.6	Z10

SPECIFICATIONS

MODEL	H3V63/NV64	H3V112/NV90/111	H3V140/180/NV137/172
Discharge Rate (cc/rev)	12		15
Max. Pressure (kg/cm ²)	170		
Max. Speed (rpm)	3250	2700	2500



DIMENSIONS

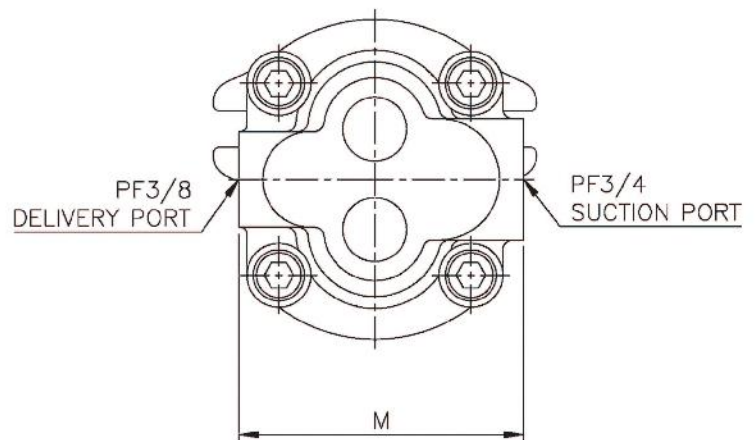
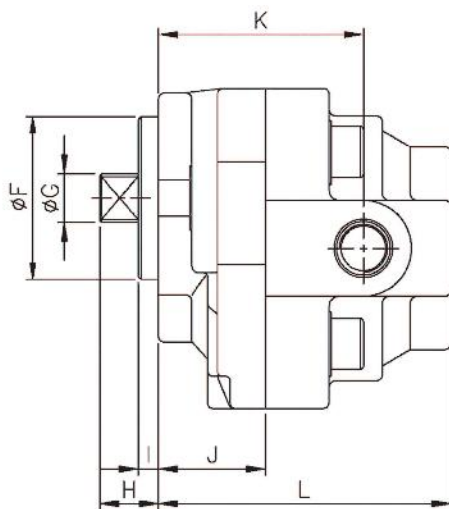
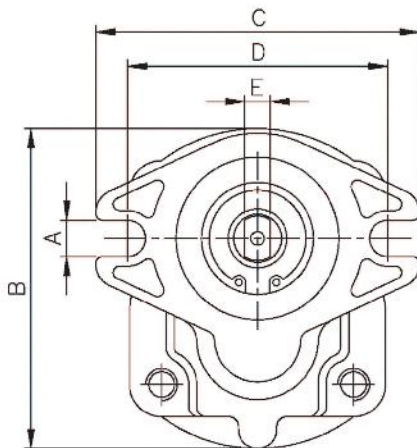
(mm)

MODEL	A	B	C	D	E	F	G	H	I	J	K	SPLINE
H3V / NV SERIES	11.4	100	101	81.4	13.5	50.8	64	6.4	37.7	91.4	89	Z12



SPECIFICATIONS

MODEL	SPK10/10(E200B)	AP12(E200B)
Discharge Rate (cc/rev)	12	
Max. Pressure (kg/cm ²)	170	
Max. Speed (rpm)	3200	



DIMENSIONS

(mm)

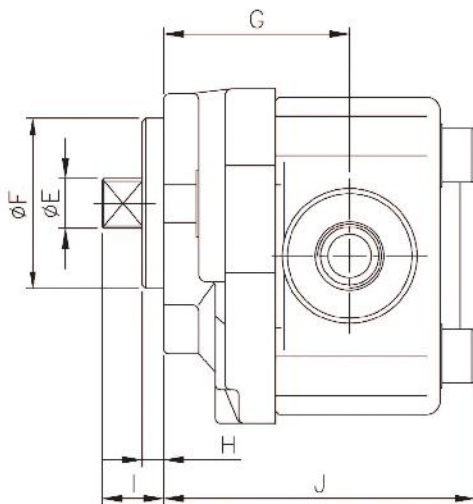
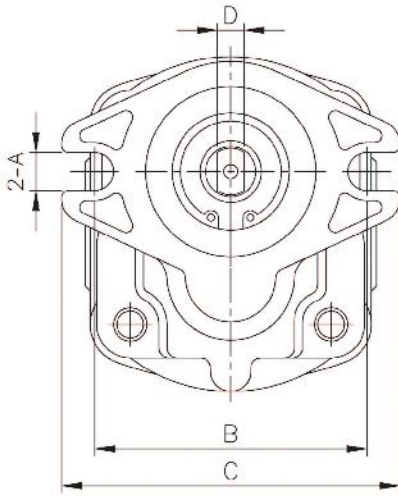
MODEL	A	B	C	D	E	F	G	H	I	J	K	L	M
SPK10/10(E200B) AP12(E200B)	11.4	100	101	81.4	8	50.8	15	18.4	6.4	33.4	64	91.4	89

GEAR PUMP FOR MITSUBISHI / CATERPILLAR

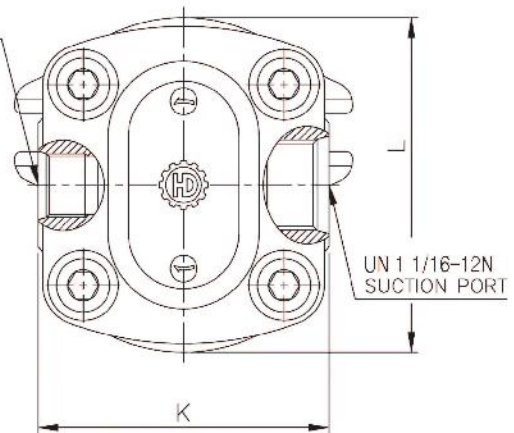


SPECIFICATIONS

MODEL	AP12(E320B)
Discharge Rate (cc/rev)	11
Max. Pressure (kg/cm²)	170
Max. Speed (rpm)	3200



UNF 3/4-16N
DELIVERY PORT

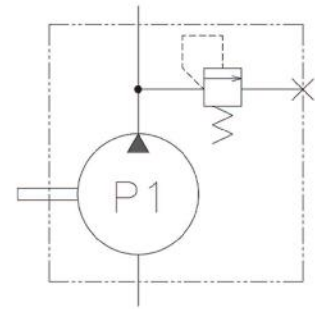


DIMENSIONS

(mm)

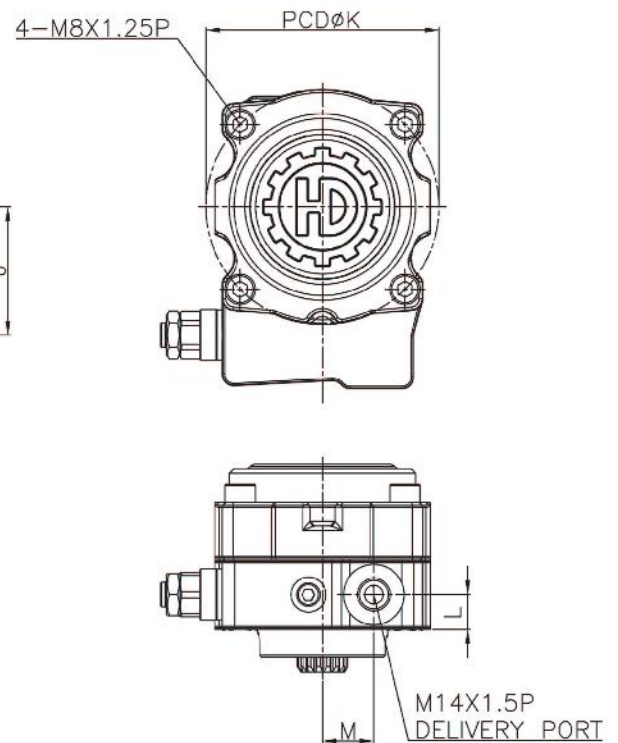
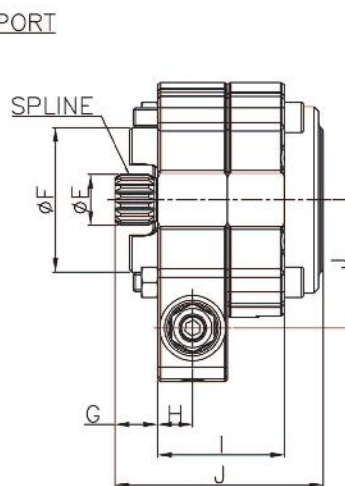
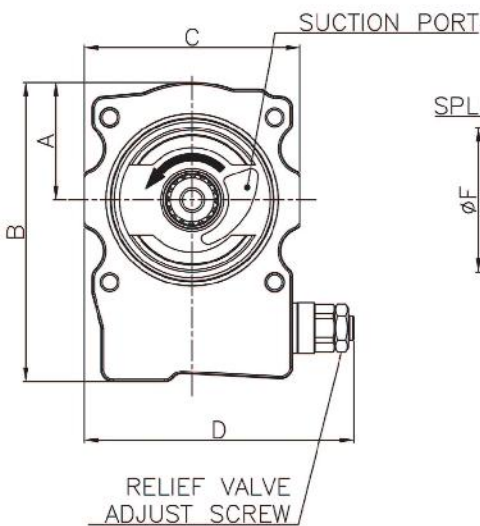
MODEL	A	B	C	D	E	F	G	H	I	J	K	L
AP12 (E320B)	11.4	81.4	101	8	16.5	50.8	63	6.4	18	99	87	100

A8VO55/80/107 SINGLE TYPE GEAR PUMP



SPECIFICATIONS

MODEL	A8VO55/80/107
Discharge rate(cc/rev)	P1 8
Max. pressure (kg/cm²)	40
Max. speed(rpm)	2500
DIRECTION	CCW (L)



DIMENSIONS

(mm)

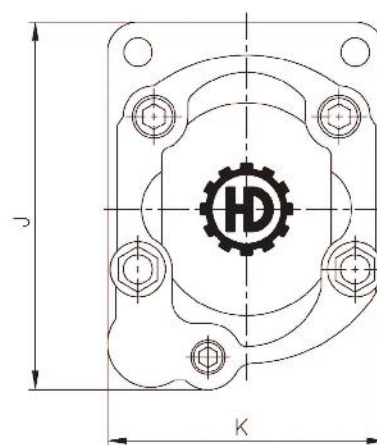
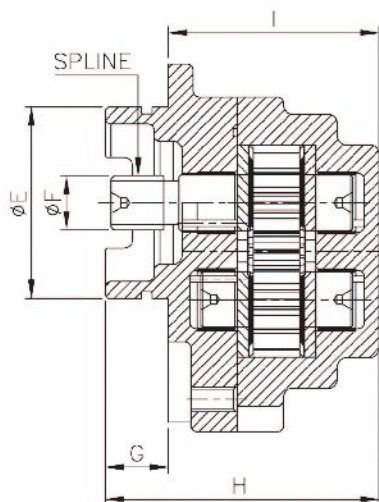
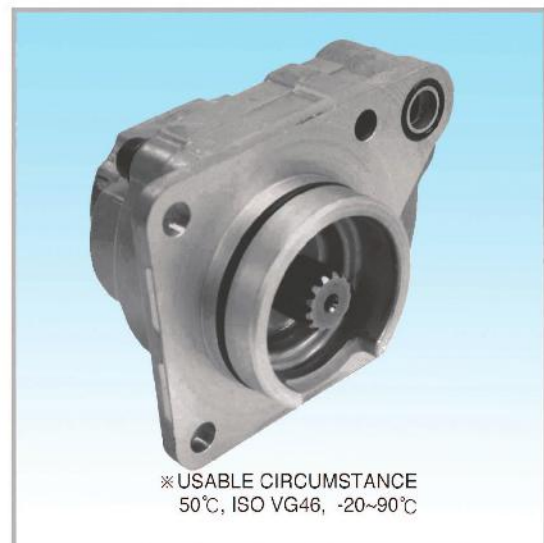
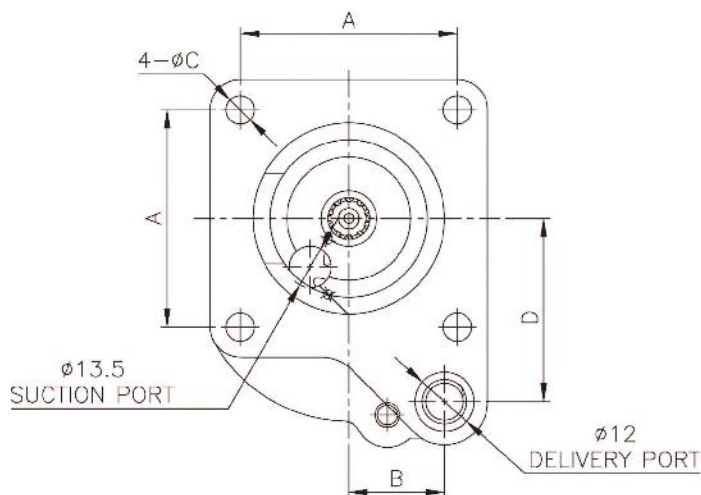
MODEL	A	B	C	D	E	F	G	H	I	J	K	L	M	SPLINE
A8VO55/80/107	50.5	128	92	115	21.7	62	18.3	15	54.5	89	100	15	22	Z16

A8VO80 SINGLE TYPE GEAR PUMP



SPECIFICATIONS

MODEL	A8VO80
Discharge Rate (cc/rev)	8
Max. Pressure (kg/cm²)	50
Max. Speed (rpm)	2500



DIMENSIONS

(mm)

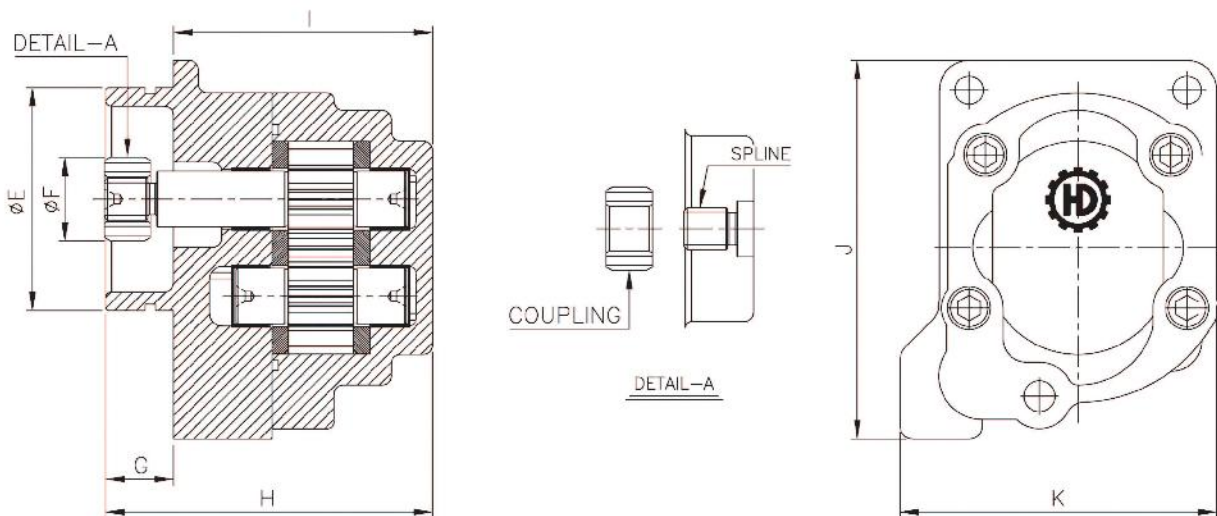
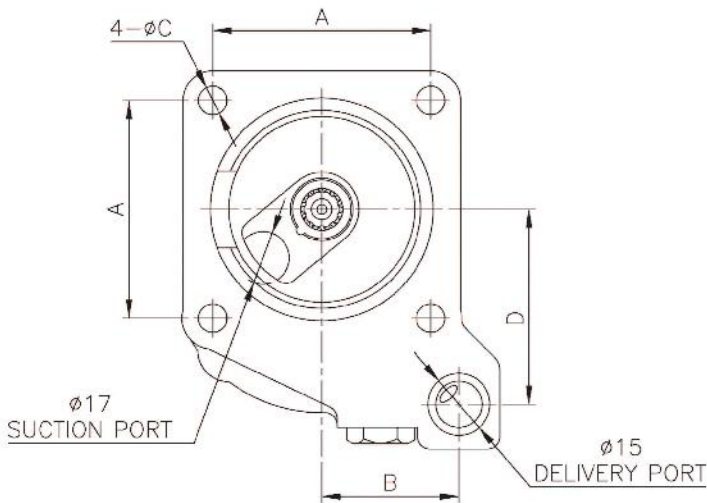
MODEL	A	B	C	D	E	F	G	H	I	J	K	SPLINE
A8VO80	70.4	31	9.2	59.4	62	17.6	20.5	88.8	68.3	119.2	90	Z13

A8VO107 SINGLE TYPE GEAR PUMP



SPECIFICATIONS

MODEL	A8VO107
Discharge Rate (cc/rev)	12
Max. Pressure (kg/cm²)	50
Max. Speed(rpm)	2500

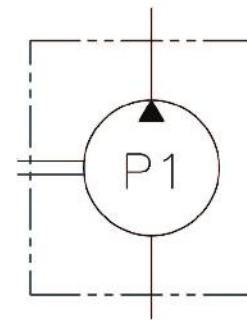
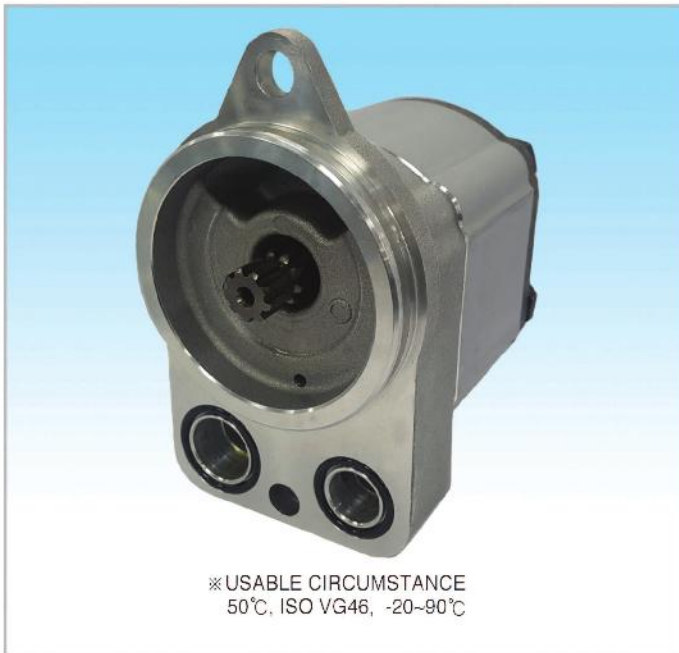


DIMENSIONS

(mm)

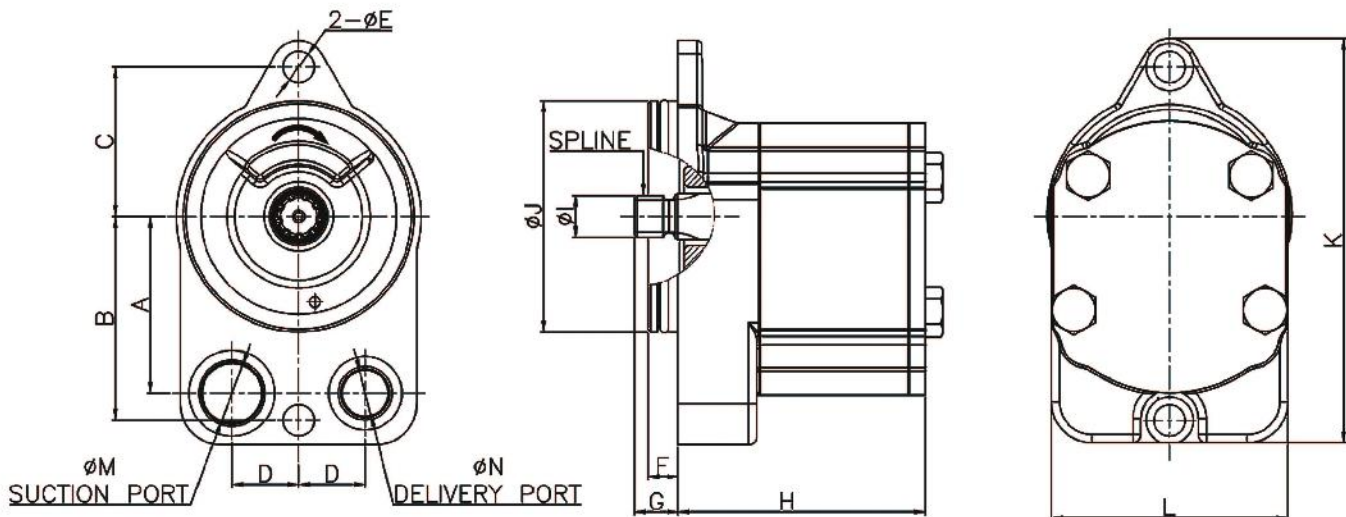
MODEL	A	B	C	D	E	F	G	H	I	J	K	SPLINE
A8VO107	70.4	44.3	9.2	63	72	21.6	22	105.6	83.6	122.3	102.3	Z10

A8VO160/200 SINGLE TYPE GEAR PUMPS



SPECIFICATIONS

MODEL	A8VO160/200
Discharge Rate(cc/rev)	19
Max. Pressure (kg/cm ²)	40
Max. Speed (rpm)	2000
DIRECTION	CW (R)



DIMENSIONS

(mm)

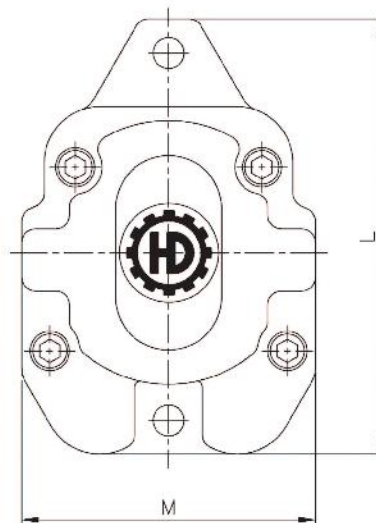
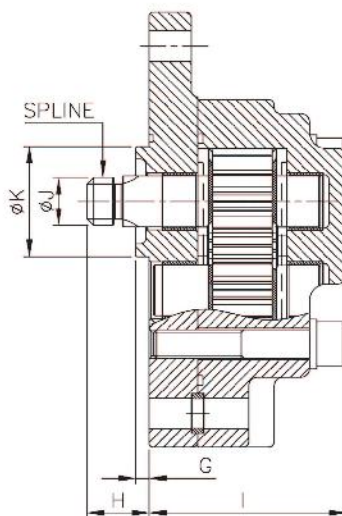
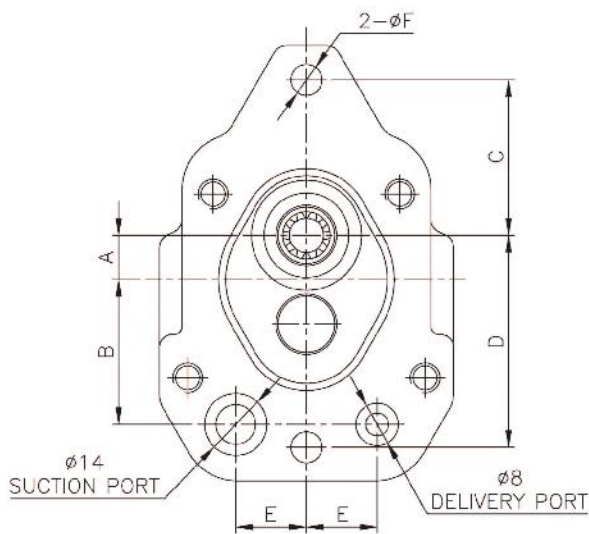
MODEL	A	B	C	D	E	F	G	H	I	J	K	L	M	N	SPLINE
A8VO160	65	75	55	24.5	11.5	16.8	12	91	17	85	149	87	17	14	Z10
A8VO200						11	16		15.4				22	17	Z9

A8V SERIES SINGLE TYPE GEAR PUMPS



SPECIFICATIONS

MODEL	A8V55/59/80/86/107/115	A8V172
Discharge Rate (cc/rev)	12	16.6
Max. Pressure (kg/cm²)	50	
Max. Speed(rpm)	2500	



DIMENSIONS

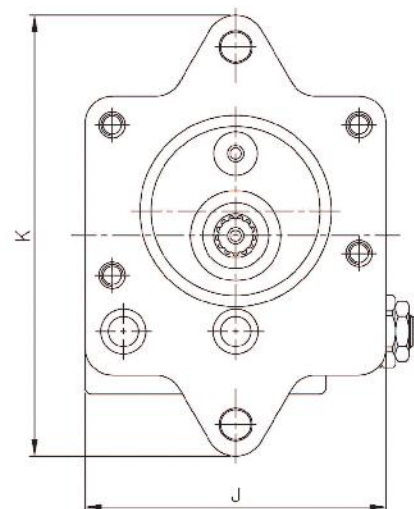
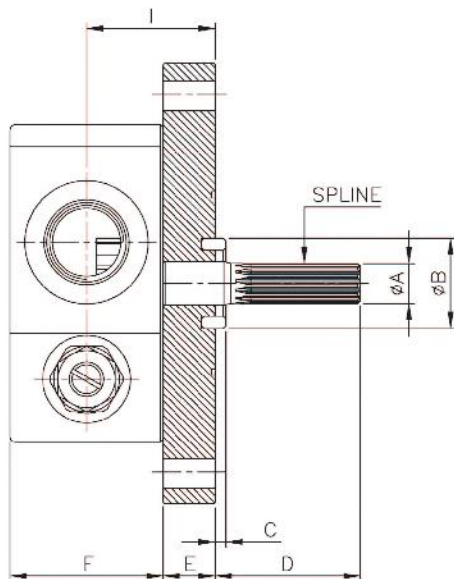
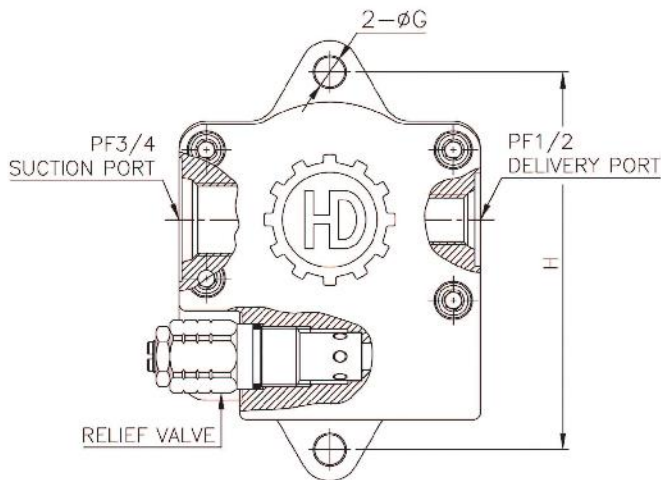
MODEL	A	B	C	D	E	F	G	H	I	J	K	L	M	SPLINE
A8V SERIES	15.7	51.2	55	75	25	11	4.8	21.9	69.7	17	39	154	104	Z10

NV SERIES GEAR PUMP OF INNER DRAIN TYPE



SPECIFICATIONS

MODEL	NV64/50	NV80/90/111	NV120/137	NV172
Discharge Rate (cc/rev)	12		15	
Max. Pressure (kg/cm ²)	50			
Max. Speed (rpm)	3250	2700	2500	2200



DIMENSIONS

(mm)

MODEL	A	B	C	D	E	F	G	H	I	J	K	SPLINE
NV SERIES	14.8	33	4	53	19	56	11	138	47	110	161	Z 13