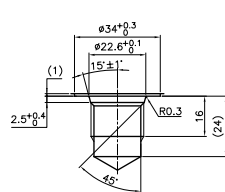
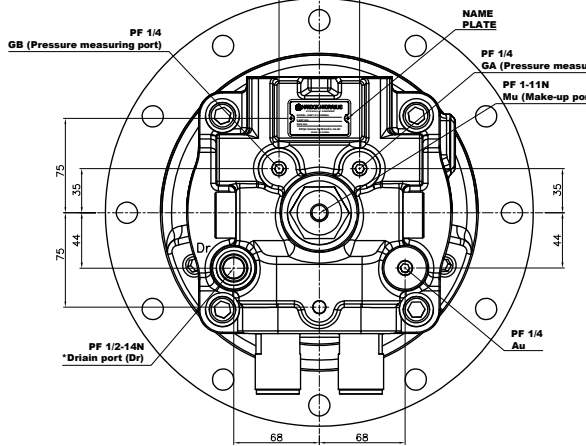


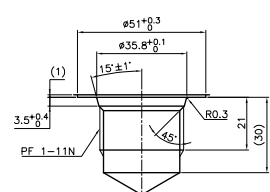


HANDOK HYDRAULIC.CO

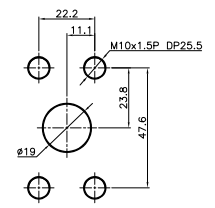




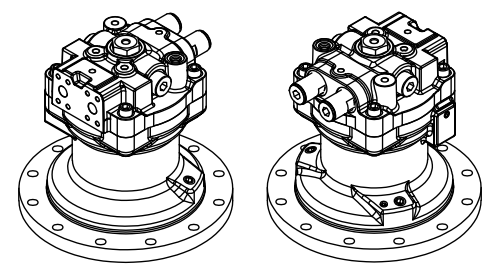
DETAIL - PF 1/2-14N
*SCALE : 2/1



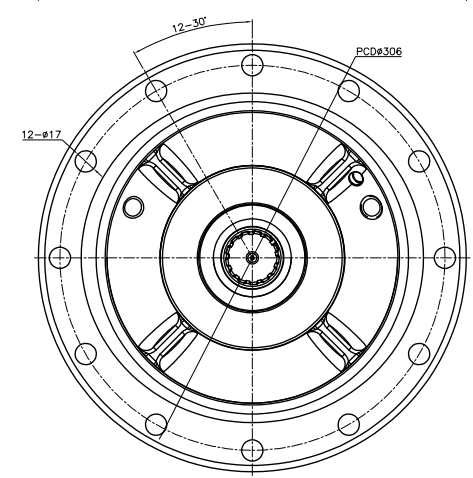
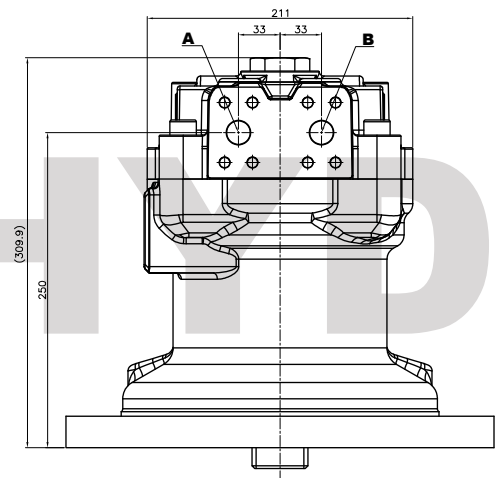
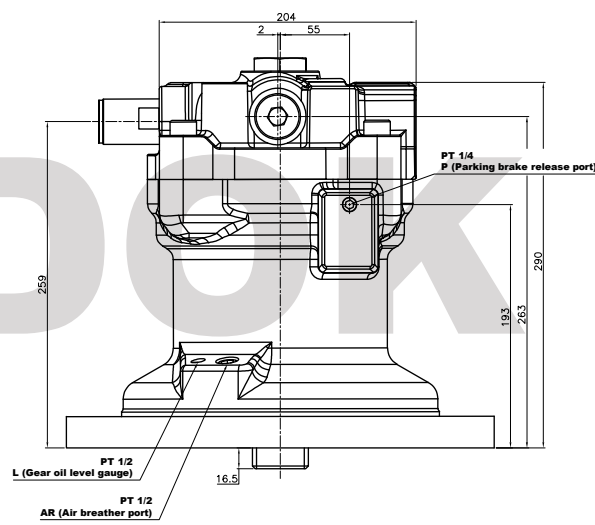
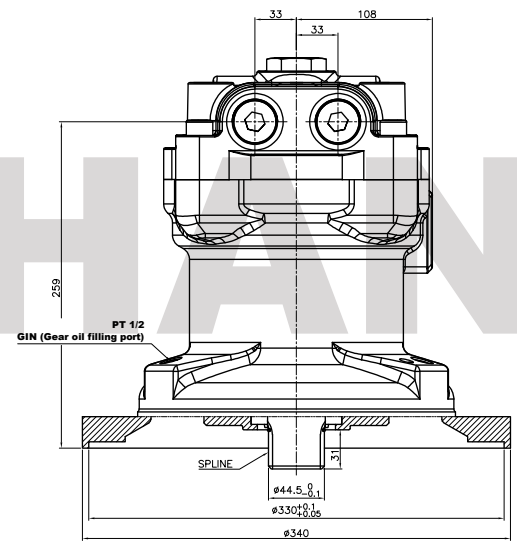
DETAIL - PF 1-11N
*SCALE : 2/1



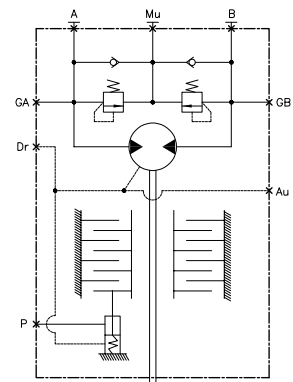
FLANGE MOUNTING FACE
A & B PORT - SAE J518-3/4
*SCALE : 2/1



VIEW-3D
*SCALE : N/S



OPERATING SPECIFICATIONS		RIGHTHAND	LEFTHAND
MODEL		MFC160-063	MFC160-062
TYPE		SWAH PLATE TYPE, FIXED-DESPACEMENT PLUNGER MOTOR	
DISPLACEMENT	cm ³	151	
WORKING PRESSURE	MPa	25	
Max. FLOW	L/min	253	
BREAKING TORQUE	N.m	685~891	
RELEASE PRESSURE (STROKE END)	MPa	3.1	
RELIEF VALVE SETTING PRESSURE	MPa	25	
MASS	kg	53	
SPEED REDUCTION TYPE		PLANETARY2-STAGE	
REDUCTION RATIO		16.8	
LUBRICATE OIL		GEAR OIL SAE90 (API class GL-4 grade)	
LUBRICATE OIL VOLUME	L	15.3	
GREASE		EXTREME PRESSURE MULTIPURPOSE GREASE	
GREASE VOLUME		A SMALL AMOUNT	
MASS	kg	241	
TOTAL MASS	kg	294	



HYDRAULIC CIRCUIT FOR PRINCIPLE

INVOLUTE SPLINE TO DIN			
NUMBER OF TEETH	16	TOOTH SURFACE ROUGHNESS	1/10
STANDARD PITCH CIRCLE DIAMETER	40.0	TYPE OF FIT	SIDE FIT
OUTER	ROOT FORM	FLAT ROOT	CLASS
	MODULE	2.5	MEASUREMENT OVER PINS
	PRESSURE ANGLE	20°	PIN DIAMETER
ADDENDUM MODIFICATION COEFFICIENT	0.800	RULE	JIS

CO	HMF151 SWING MOTOR	1	
REV	REV NAME	REV-DATE	REV-CHK
1			
HAN DOK HYDRAULIC			
HMF151-SPC-01			
SPECIFICATION			
HMF151-SPC-01			